



ARKALA
Life
The fine art of living @ Tukuguda

Premium 2, 2.5 & 3 BHK Homes



ARKALA
Life

THE FINE ART OF LIVING

To live a life that gives you immense happiness, it is of paramount importance that you live in an exclusive home in an ideal location. That home which offers an opportunity to realize your lifestyle goals, that address which assures complete exclusivity and convenience will let you master the fine art of living.

Presenting Arkala Life, where great value comes to life.

Enveloped in nature and evoked by infinite amenities, Arkala Life offers more ways to embrace life, more opportunities to live life the way you want.

ARKALA Life

OVERVIEW

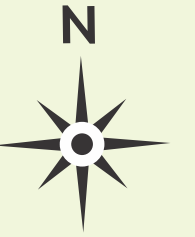
Site Area: 5 Acres | Phase-1: 3.6 Acres | Phase-2: 1.4 Acres

Phase -1: Structure: 2C+G+9 Floors | Total No. of Units: 288 | Type of Units: 2, 2.5 & 3 BHK

2 BHK: 1112 - 1413 Sft. | 2.5 BHK: 1432 - 1550 Sft. | 3 BHK: 1567 - 1825 Sft. | Clubhouse: 15,000 Sft.



MASTER PLAN



- 1. MAIN ENTRANCE & EXIT
- 2. SECURITY
- 3. GRANITE STONE & COBBLES PAVING
- 4. JOGGING/ CYCLING / WALKING TRACK
- 5. GRASS PAVERS
- 6. BLOCK ENTRANCE PAVING
- 7. FIRE TENDER MOVEMENT
- 8. TOTLOT AREA STAIRS

- 9. STEPPED SEATING
- 10. MULTIPURPOSE LAWN
(YOGA, MEDITATION WITH TREE LINES)
- 11. SEATING ALCOVES ON 100'-0" ROAD
- 12. TOTLOT ENTRANCE
- 13. CHILDREN'S PLAY AREA WITH SAND BED
- 14. KIDS PLAY AREA WITH EPDM FLOORING
- 15. FITNESS STATION

- 16. BASKET BALL COURT
- 17. SEATING ALONG GRASS PAVERS PATHWAY
- 18. SEATING POCKETS ALONG COMPOUND WALL
- 19. CUTOUT AREA PLANTER BED WITH LAWN
- 20. AVENUE PLANTING
- 21. PAVING APPROACH ROAD
- 22. VISITORS PARKING
- 23. OUT DOOR BADMINTON COURT

- 24. CRICKET PRACTICING PITCH
- 25. SKATING TRACK
- 26. HOP- SCOTCH PLAY AREA WITH LETTERS
- 27. IDENTIFYING OBJECTS
- 28. CHESS PLAY AREA
- 29. INDOOR BADMINTON COURT



ENTER A NEW SPACE OF *Life*

Make a first impression that is totally unique to your life. The attractive & inviting entrance at Arkala Life offers a comfortable space for entry/exit, brings a welcoming vibe and truly enhances the look of the community.



Landscape Lawn



WELCOME NATURE INTO YOUR *Life*

Make your dreams of outdoor living a reality. A bright, colourful & lively environment spread as a verdant landscape welcomes you to lie down, relax, entertain or play with children.



Seating Spaces

Entrance Seating Spaces



CONNECT WITH FRIENDS AND *Life*

Make friends and have meaningful relationships with dedicated hang out spaces that enrich your life. Introduce yourself to neighbors, make time to connect with old friends and increase your sense of belonging to the community.



Children Play Area

Hop-sotch Play Area



GIVE YOUR KIDS
A CHILDHOOD FULL OF *Life*

See your child's energy fly high, hit the ball into the sky and have fun with buddies. Arkala Life has a dedicated space for children to play, learn & discover the world around them.



Badminton Court



Basketball Court



Cricket Net



Skating Rink

Life IS A SPORT. JUST PLAY IT!

Indulge in the game of your choice at home. Whether it's shooting baskets or playing badminton together, you'll get opportunity to build skills and fitness in a safe environment.



Outdoor Gym



Yoga

FIT FUN OUTDOOR
WORKOUTS INTO YOUR BUSY

Life

Get your heart rate up while improving your overall body strength in the fresh air of the outdoors. With a welcoming, friendly and supportive environment - the outdoor fitness zone helps you focus on your fitness goals, workout at your own pace and meet some like minded fitness friends.



Reception cum guest lobby in each block



Dining Area



LIVE *Life* A LITTLE EXTRA

Receive your guests or meet up for informal meetings in an exclusive environment. The dedicated guest lobby in each block lets you and your guests sit back, relax, and mingle in a pleasant atmosphere in the comfort of your home.

LIVE SPACES THAT INSPIRE *Life*

Relax and unwind in a spacious and cozy home with unique flair. Spend time with family, entertain friends, watch TV or just sit in solitude after a long day feeling the soothing and glorious living spaces. Everything, from the modern living room to kitchen/dining at Arkala Life, is spacious enough to bring your family together and inspire quality time.



Master Bedroom

Bedroom

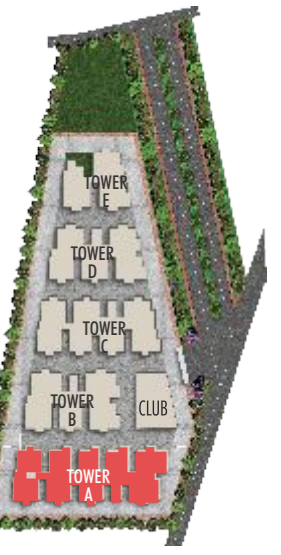
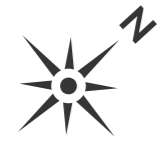
Children Bedroom



MAKE YOUR *Life* MORE COZY

Experience a home that not only looks but feels warm, welcoming and tranquil. Curl up with a good book, relax with a cup of coffee, unwind with your loved ones and enjoy a personal retreat every day.

TOWER-A
FIRST FLOOR PLAN



2 BHK-E-1183 Sft.



2 BHK-E-1040 Sft.



2 BHK-E-1058 Sft.



2 BHK-E-1040 Sft.



2.5 BHK-E-1338 Sft.



8'-0" WIDE CORRIDOR

8'-0" WIDE CORRIDOR

8'-0" WIDE CORRIDOR

6



2 BHK-W-1261 Sft.

7



2 BHK-W-1244 Sft.

8



2 BHK-W-1252 Sft.

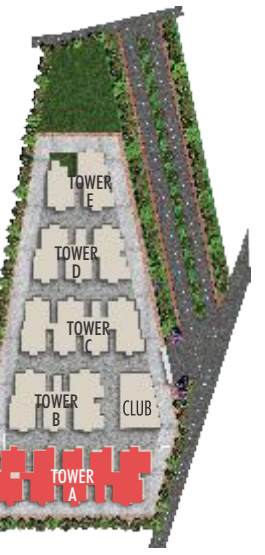
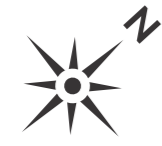
DN
UP

9



2.5 BHK-W-1387 Sft.

TOWER-A
TYPICAL FLOOR PLAN



2 BHK-E-1248 Sft.

2 BHK-E-1112 Sft.

2 BHK-E-1130 Sft.

2 BHK-E-1112 Sft.

3 BHK-E-1594 Sft.



8'-0" WIDE CORRIDOR

8'-0" WIDE CORRIDOR

8'-0" WIDE CORRIDOR

2 BHK-W-1324 Sft.

2 BHK-W-1305 Sft.

2 BHK-W-1314 Sft.

3 BHK-W-1645 Sft.



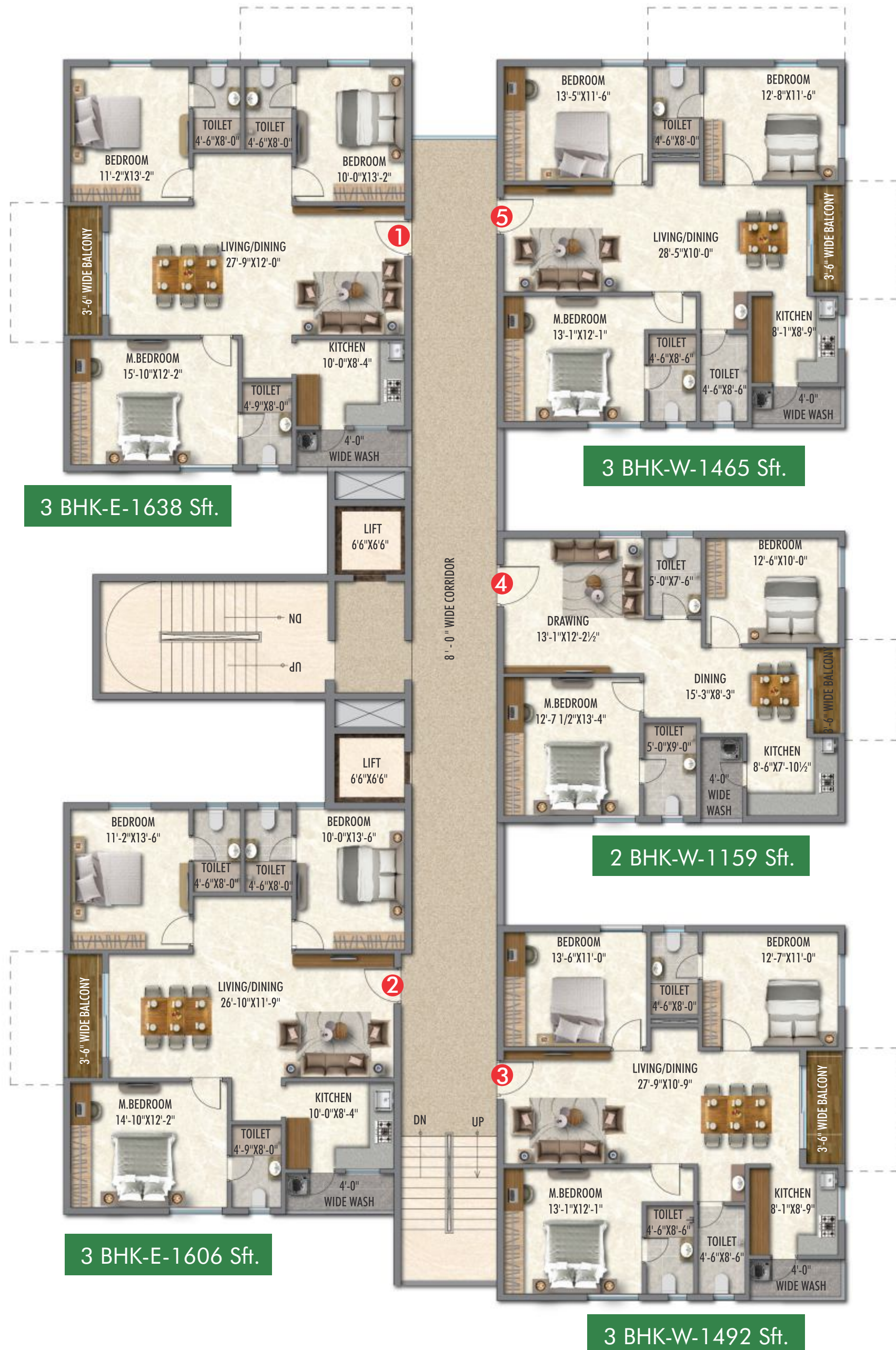
LIFT 6'6"X6'6"

SERVICE LIFT 6'6"X9'10"

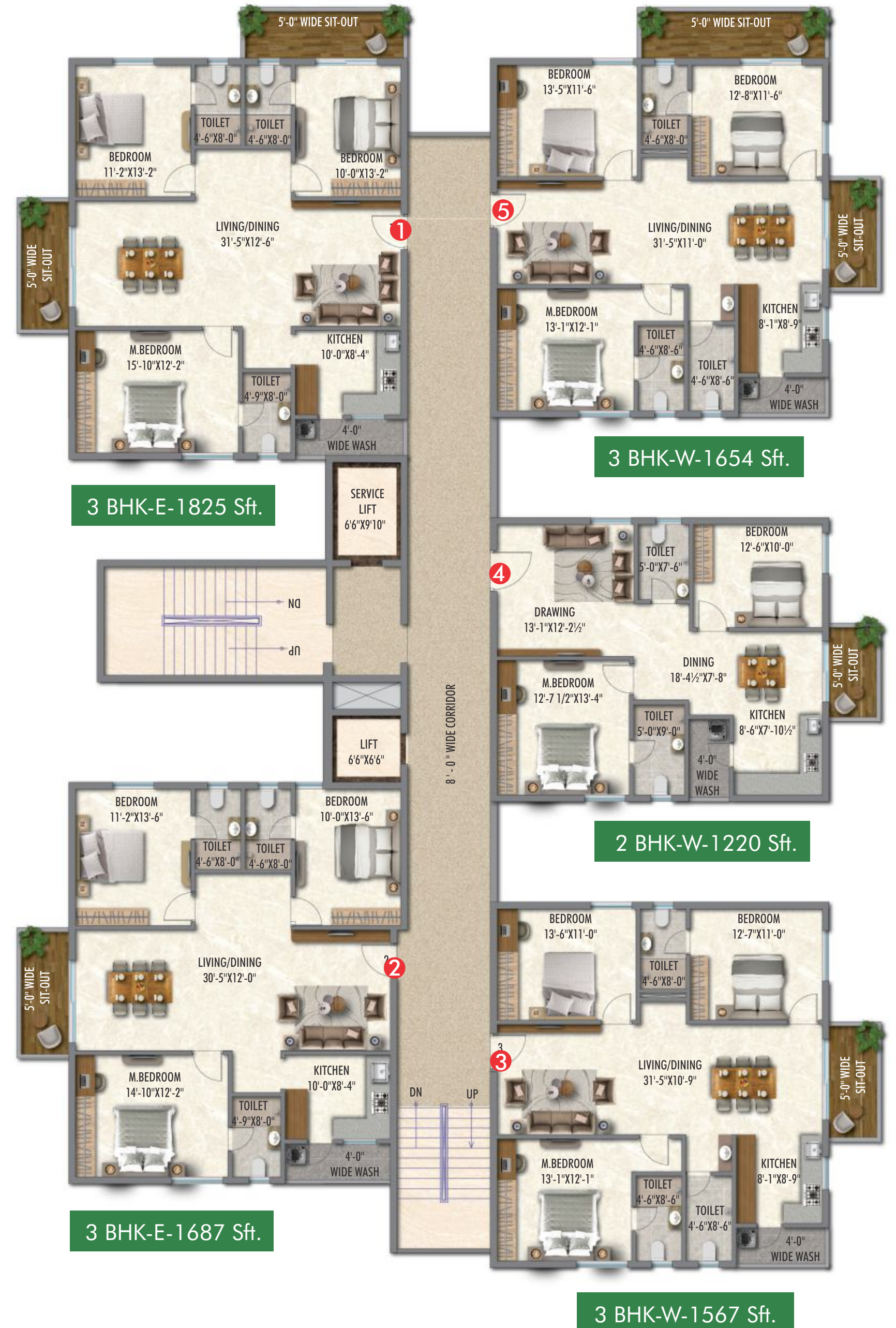
LIFT 6'6"X6'6"

DN UP

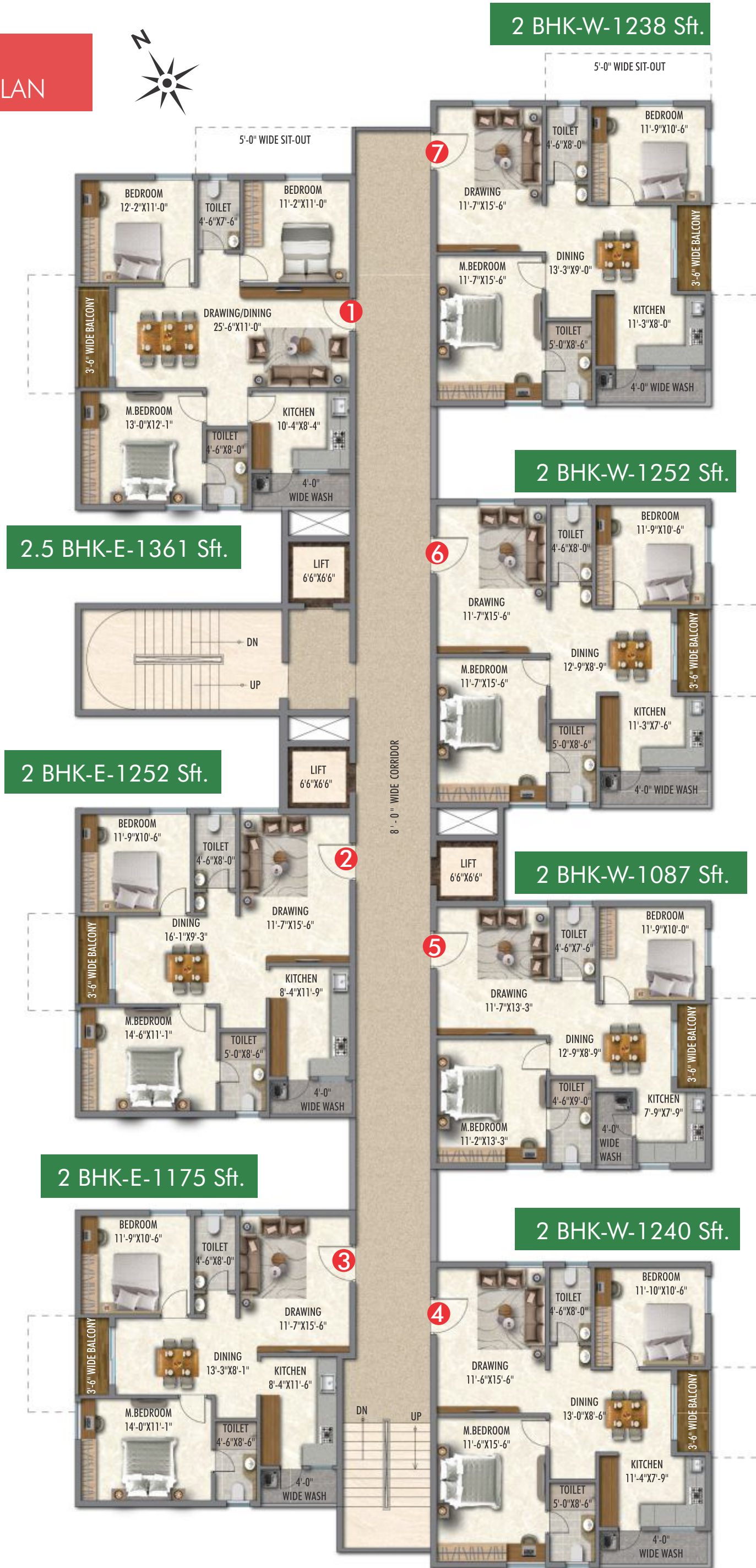
TOWER-B
FIRST FLOOR PLAN



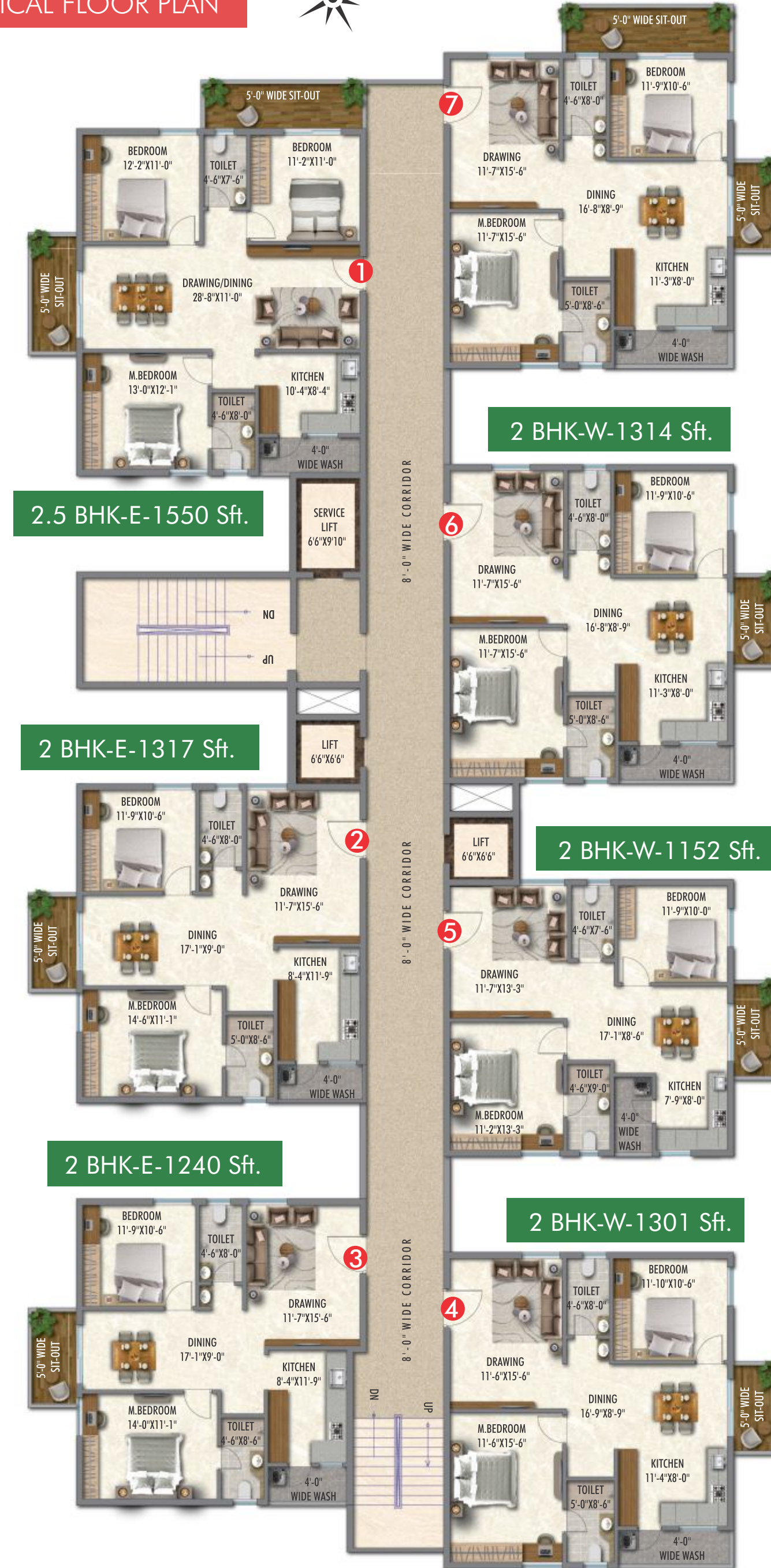
TOWER-B
TYPICAL FLOOR PLAN



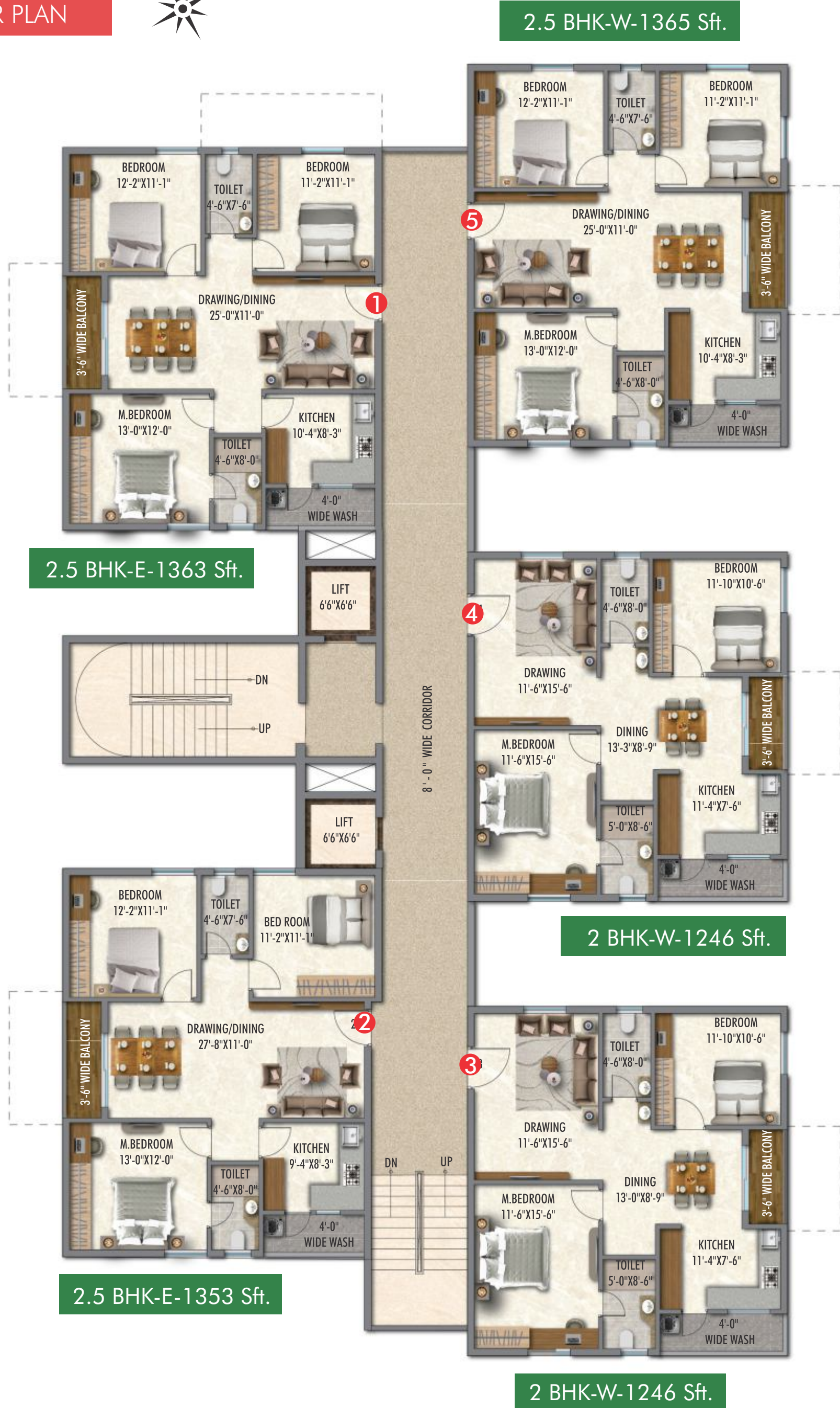
TOWER-C
FIRST FLOOR PLAN



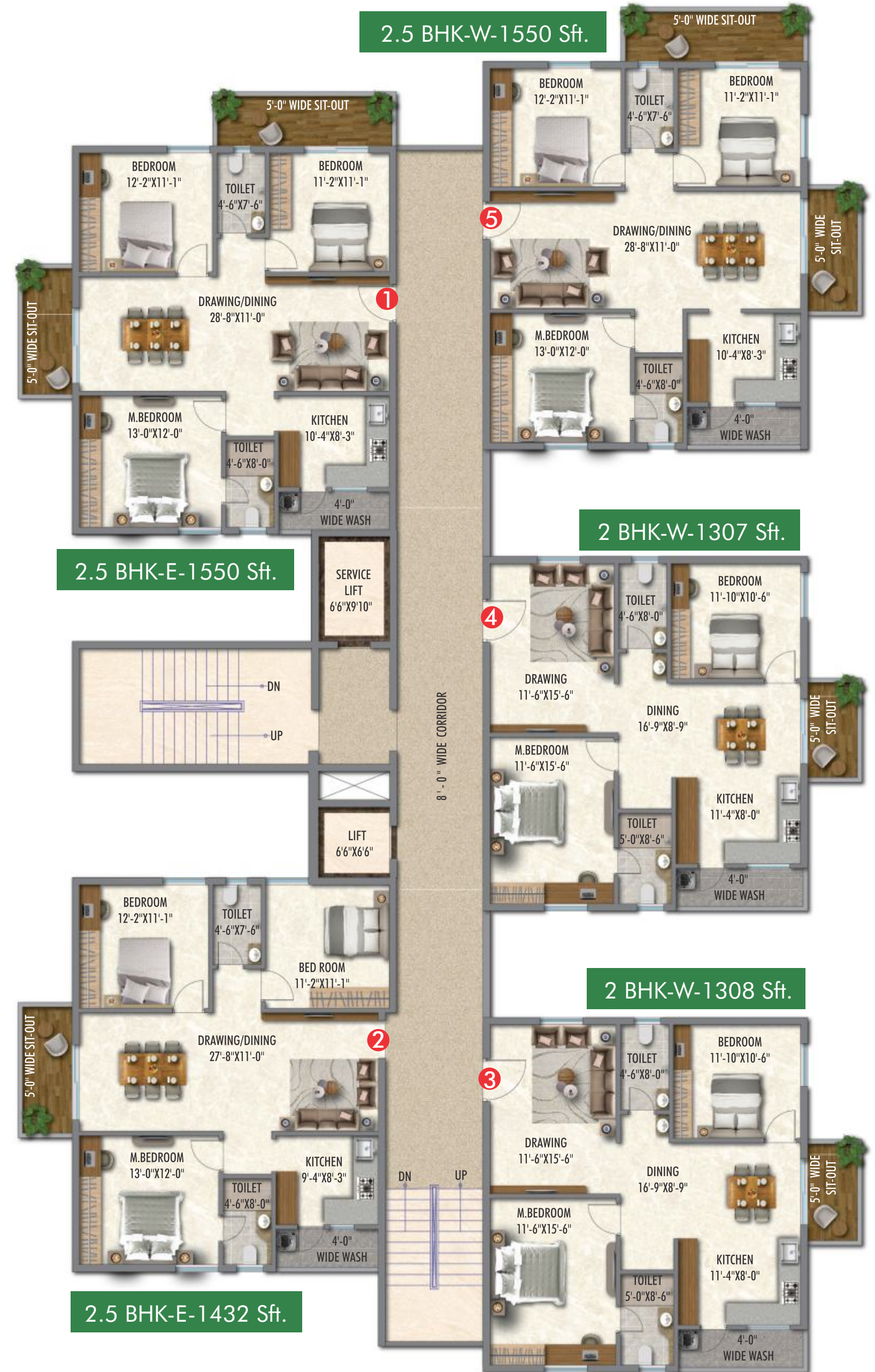
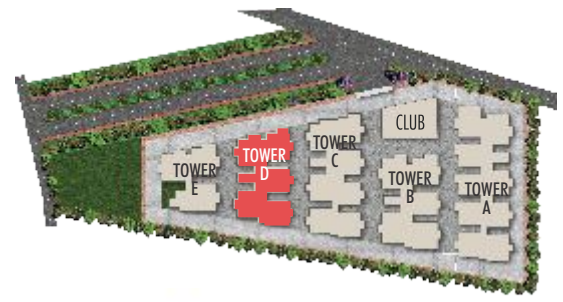
TOWER-C
TYPICAL FLOOR PLAN



TOWER-D
FIRST FLOOR PLAN



TOWER-D
TYPICAL FLOOR PLAN



TOWER-E
FIRST FLOOR PLAN



TOWER-E
TYPICAL FLOOR PLAN



15,000 Sft. Clubhouse

EMBRACE A *Life* OF CHOICES

Indulge in refreshing lifestyle amenities that let you pursue new interests and enjoy the relaxing pastimes you've always loved. Embrace the urban living that you deserve to experience with the contemporary amenities of Arkala Life.

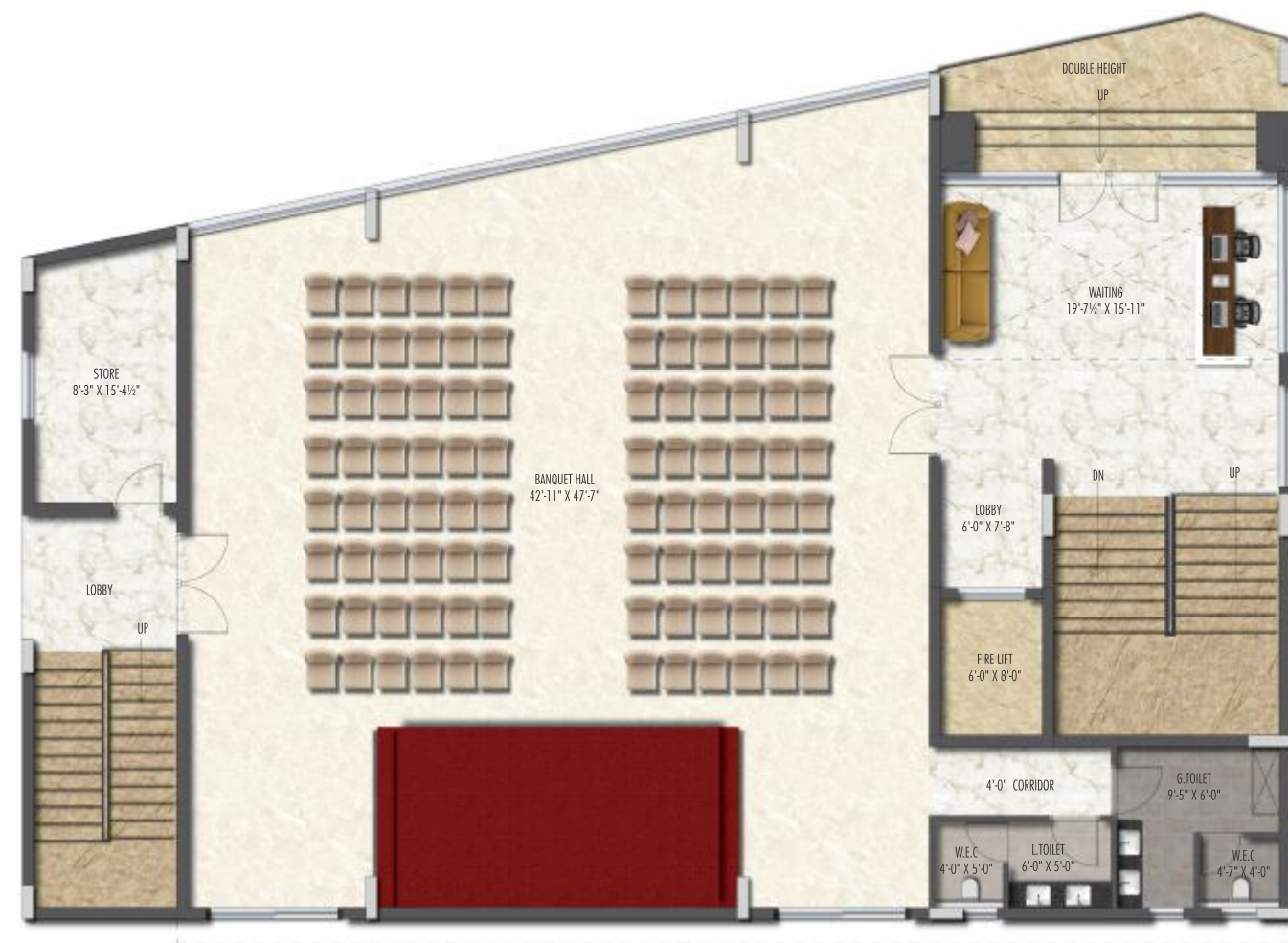
Clubhouse Amenities

- Banquet Hall
- Preview Theatre
- Co-Working Spaces
- Guest Suites
- Gym
- Reception - Spa & Salon
- Infinity Pool
- Children Pool
- Deck Area
- Yoga
- Terrace Seating Spaces
- Bar & Barbuque



Clubhouse Lobby

GROUND FLOOR



FIRST FLOOR



Banquet Hall



Business Lounge & Co-Working Area

CELEBRATE THE SPIRIT OF *Life*

Relax, unwind and savor your celebration in a venue that is perfect for any event. Anniversaries, birthdays or any life ceremonies, the spacious and cozy party hall caters for all.

SIMPLIFY YOUR WORK *Life*

Get immersed in a welcoming and positive work environment that will feed your creativity, helping you to achieve your professional goals. The spacious business lounge with its unique ambience inspires you to be more productive, in the comfort of your home.

SECOND FLOOR



Preview Theater



Guest Suite

A FASCINATING *Life* MAKES A FASCINATING MOVIE.

Experience the joy and excitement of movies right next to your home. With an immersive preview theatre that has a thoughtful design and innovative sound system, you will get a movie experience like no other.

MAKE GUEST'S *Life* PLEASANT

Treat your guests to a comfortable stay in sophisticated yet swanky environment. The dedicated guest suites let you enjoy peace of mind while your guests make the most of stay, within the comfort of your home.

THIRD FLOOR



Gym



Reception - Spa & Saloon

LIVE A MORE ACTIVE & FIT

Life

Keep up with the demands of your busy life- stay physically active. Try some jumping jacks, pushups or other fat-blasting moves, tone your body and live a fit lifestyle with our state- of- the- art gymnasium.

FIND TIME FOR YOUR

Life
& LIFESTYLE

Slow down from your busy life, not just your body but mind as well with some 'me-time'. Relax and unwind with various beauty and wellness treatments at the exclusive spa/saloon.

TERRACE



EXPLORE THE REFRESHING SIDE OF

Life

Give your body a complete workout by swimming in the fresh cool waters. Become a regular at the pool, improve fitness, meet new people who enjoy swimming as much as you do and feel refreshed everyday.

Infinity Pool



Children Pool



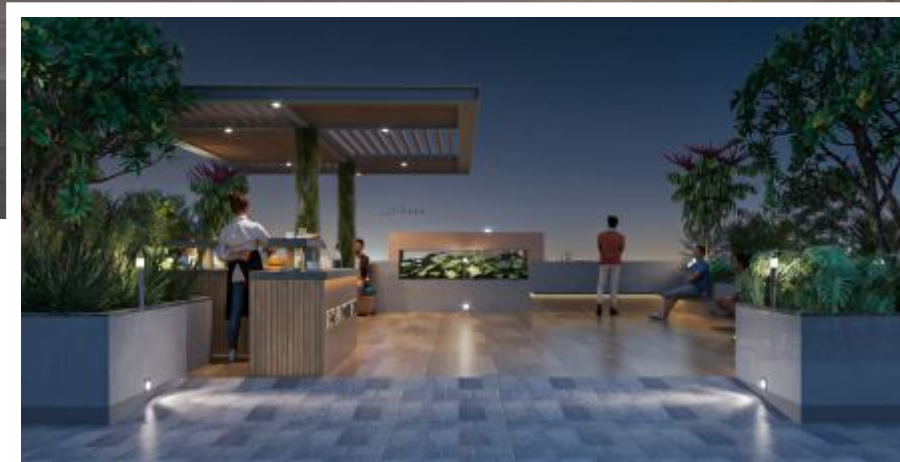
Deck Area

TERRACE



Party Deck

Terrace Seating Spaces



Yoga Deck

TAKE YOUR TERRACE *Life* TO THE NEXT LEVEL

Live your dream of having verdant space around. Host elaborate parties or just a close-knit barbecue with your loved ones; watch the stars and night go by or perform yoga asanas early in the morning- the open terrace allows you to execute it all.



Indoor Badminton Court

PLAY BADMINTON FOR *Life*

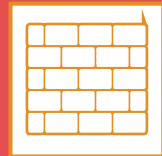
Fill your boring life with Badminton; get active, sweat, and be on your toes while having fun. Fun and sociable, badminton is a great way for people of all ages to keep fit.

SPECIFICATIONS



STRUCTURE

RCC framed structure with CC block masonry



WALL FINISHES

Internal: Two coats of putty, one coat of primer and two coats of premier emulsion

External: Texture / two coats of putty, one coat of primer and two coats of exterior emulsion



FLOORING

Drawing, Dining, Living, Bedrooms, Kitchen: 600X600 mm sized double charged vitrified tiles of reputed brand

Balcony / Utility / Bathroom: Antiskid vitrified / ceramic tiles

Corridors: Vitrified Tiles

Staircase: Natural Stone / Granite



WINDOWS / GRILLS

All windows are of UPVC glazed sliding windows with MS safety grills and mosquito mesh shutter.



DOORS

Main Door: Hardwood frame and teak finished flush shutter with melamine spray polish with reputed hardware

Internal / Toilet / Utility Doors: Hardwood frame with both sided laminated flush shutter with reputed hardware

Balconies: UPVC glazed French sliding doors with mosquito mesh shutter



BATHROOMS

Sanitary fittings: Hindware / Cera or equivalent make wall mounted EWC and wash basins in all bathrooms

CP fittings: Jaquar or equivalent make single lever bath and shower mixers

Ceramic tile cladding up to 7' height

Provision for geysers and exhaust fans in all bathrooms

Grid ceiling in all bathrooms



KITCHEN

Granite platform with single bowl stainless steel sink, 2 feet tile cladding & provision for water purifier

Separate connections for municipal and bore well water



ELECTRICAL

Cables: Concealed Copper wiring of Polycab or equivalent

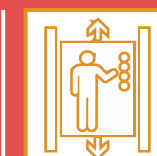
Modular switches: Legrand or Anchor or equivalent

Power outlets: for air conditioners in all bedrooms and living

for geysers in all bathrooms

for chimney, Refrigerator, Microwave, Mixer, RO in kitchen

for Washing Machine in utility area



LIFTS

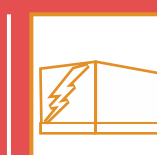
Passengers lift & service lift with stainless steel body for each tower of Johnson or equivalent make



COMMUNICATIONS

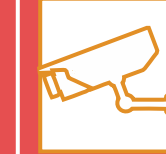
Intercom facility to all units connecting security and neighborhood.

Fiber cable Provision for internet and DTH



POWER BACK-UP

100% power back up except for AC's & Geysers



SECURITY / BMS

Round the clock security

Surveillance cameras in appropriate locations with control room

Solar Power Fencing around the compound



PARKING MANAGEMENT

Well designed parking spaces with drive way markings, parking signages

Dedicated commercial provisions for charging 5 electrical vehicles

Car Washing Space



WATER / SEWAGE TREATMENT PLANTS

Water treatment/Softening plant for bore well water

Sewage treatment plant of adequate capacity as per norms will be provided inside the project

Treated sewage water will be used for the landscaping

TCS Adibatla



Aga Khan Academy



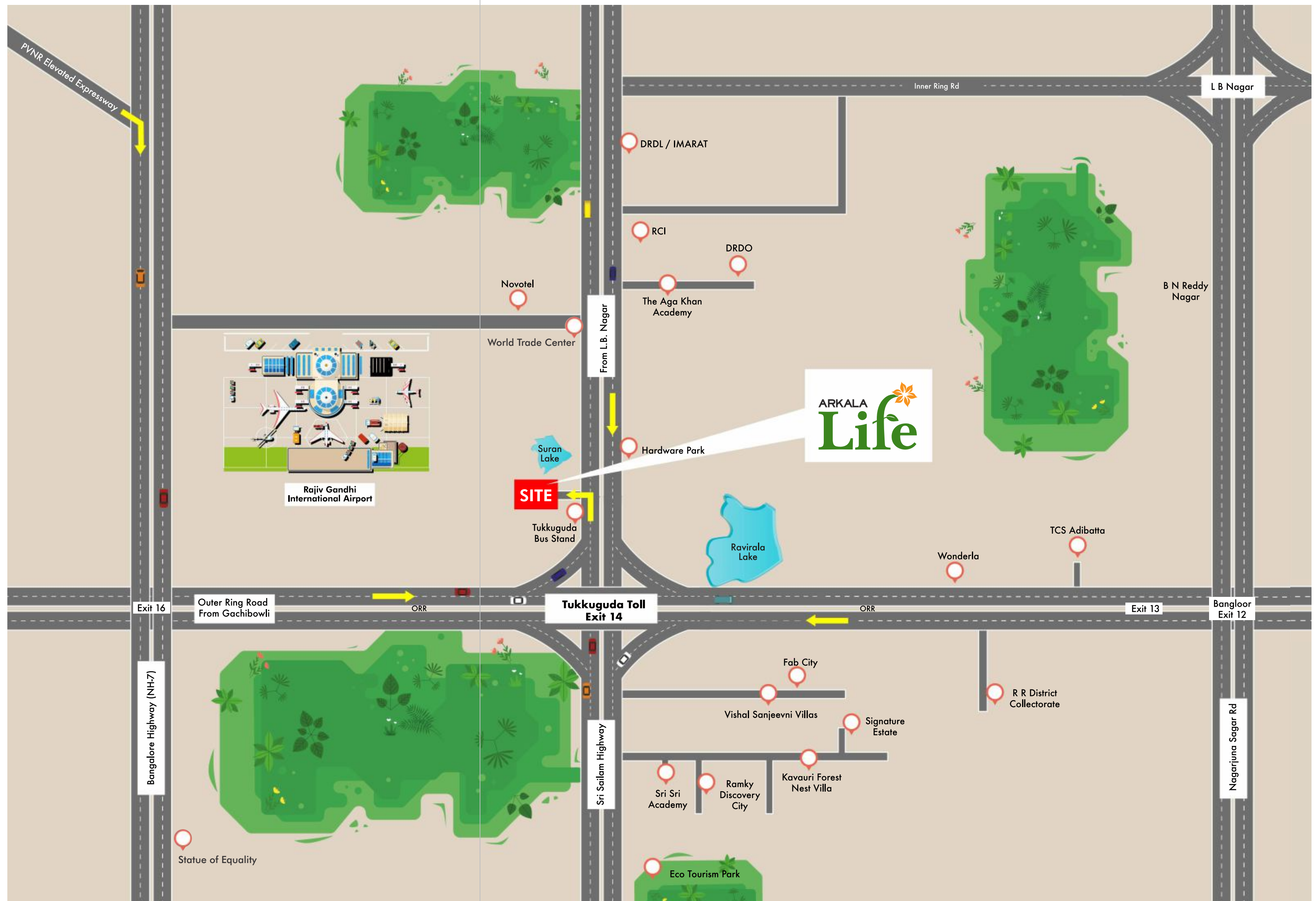
Wonderla



Intl. Airport



Fab City



PROXIMITY: 5 mins. to RGI Airport | 5 mins. to Airport Metro | 8 mins. to Fab City (E City) | 10 mins. to Hardware Park | 10 mins. to DRDO | 10 mins. to TCS Adibatla | 30 mins. to Gachibowli

AN ADDRESS
THAT STANDS FOR CONVENIENT

Life

Feel pampered as your every wish is within arm's reach. Arkala Life, at Tukkuguda, offers the perfect mix of privacy and connectivity. Not far from the city, it's just 5 minutes from the international airport and 25 minutes from the IT corridor of Gachibowli and Financial District. Close to schools, colleges, entertainment centers and offices, it is fast becoming the residential area of choice for families and individuals alike.

LEADERSHIP TEAM



Praneeth Reddy Arkala
Managing Director

Managing Director of ARIL, Praneeth Reddy, has extensive experience in business management within the infrastructure industry. He has worked for 7 years in senior roles such as Head of Programme Management Office and Corporate Planning Cell at Ramky Infrastructure Ltd. He has a post-graduate degree in Construction Management from NICMAR and a degree in Civil Engineering from JNTU. His passion for improving quality of life and increasing living standards of the society is the driving force behind the establishment of his own company. With his wealth of experience, technical expertise, and commitment to creating positive impact, he is poised to excel as an entrepreneur in the infrastructure industry.



Nakirekanti Chandrasekhar
Director - Projects

Nakirekanti Chandrasekhar, the Projects Director of ARIL, has the breadth of knowledge and depth of practice to drive our company with matchless performances. He is a Civil Engineering graduate having more than 32 years of experience in the field of construction. After 18 years in the government sector, as an Engineer in the Singareni collaries company limited, he moved to the private sector, where he worked for Ramky infrastructure private limited for 12 years. He was the project director for Srinagar Bhaniyal Expressway Ltd, a National highway in Jammu & Kashmir and has executed several prestigious projects of ARIL.



Ajay Kumar Reddy
Director - Finance and Accounts

Ajay Kumar Reddy efficiently oversees and handles the finance and accounts of the company. He has 25 years of experience within the construction industry and has worked for 16 years at Ramky. He has a MBA degree from Osmania University and a strong understanding of financial regulations, accounting principles, and budgeting practices.



Mandadi Sridhar Reddy
Director- Designing and Planning

Mandadi Sridhar Reddy, the Designing and Planning Director of ARIL, has extensive experience in the real estate industry. He has worked for 22 years in various positions within the Ramky Group. With a Bachelor's degree in Architecture, a Postgraduate degree in Construction Management from NICMAR, and a Master's degree in Architecture, along with an LLB, he has a key role in almost all departments of ARIL. His past experience as Head of Projects at Ramky Estates and Farms Ltd. suggests that he has a strong leadership and project management skills, while the ownership of an architecture firm demonstrates his entrepreneurial spirit and creativity. At ARIL, he has been instrumental in imparting a unique blend of design, construction, and management expertise to contribute to the delivery and success of the projects.

PROJECT CONSULTANTS

ARCHITECTS



STRUCTURAL



LANDSCAPE



NEWMEDIA



ARKALA

REALTY & INFRASTRUCTURE PVT. LTD.

ARKALA REALTY & INFRASTRUCTURE PVT. LTD.

Sy No. 196, Mankal, Tukkuguda, Hyderabad, Telangana - 501 359.

9083 161616

info@arkala.in | www.arkala.in



Scan for location



P02400005619