

Assetz



marq^{3.0}
THE BETTER LIFE



CGI artist's impression

*Here's to the ones who've found their space,
their own relaxed air, and the natural calm that
only comes with feeling perfectly at home.*

Here's to us. The ones who live life better.

Park People

Find us around 6 acres of parks
in our 22-acre township.

The township we call home

Sprawled over a land area of

22 Acres

With greenery that spans

6 Acres of Parks

A thoughtfully built township with

80% Open Space

And living spaces that include

3 & 4 BHKs

MASTER PLAN



CGI artist's impression

Legend:

- | | | | |
|---------------------|------------------|---------------------------------|----------------------|
| 1. Entry / Exit | 5. Skating rink | 9. Jogging track | 13. Outdoor gym |
| 2. Kids' play area | 6. Tennis court | 10. Provision for barbeque area | 14. Volleyball court |
| 3. Amphitheatre | 7. Swimming pool | 11. Pet park | |
| 4. Basketball court | 8. Linear park | 12. Party lawn | |

Our central park

*It's good to have
a world to ourselves.*



CGI artist's impression

- 4 acres of the central park
- Landscaped gardens and walkways
- Children's play zones
- Swimming pool
- Pet park
- Outdoor gym
- Jogging track
- Tennis court



Our green spaces

*Walk out of the park
and into more greenery.*

*Marq offers a boulevard,
a diagonal, a plaza, and
a clubhouse, all landscaped
with lush greenery so you never
miss a moment of serenity.*



Amenities

Over 25 amenities that make more room for a better life.

~38,000 sq ft Clubhouse

Health & Sports

- Badminton courts*
- Squash court*
- Indoor gymnasium*
- Table tennis*
- Basketball court*
- Outdoor gym*
- Pool tables*
- Jogging track*
- Aerobics studio*
- Billiards table*
- Steam & changing rooms*
- Tennis court*
- Skating rink*
- Volleyball court**
- Regular swimming pools and kids' pool*

Others

- Crèche*
- Kids' play areas*
- Linear park*
- Party halls*
- Party lawn**
- Pet park**
- Amphitheatre**
- Space Provision for:
 - a. Laundry*
 - b. Convenience store*
 - c. Salon*
 - d. Barbeque area*
 - e. Cards room*
 - f. Board games area*
 - g. Reading room*

Note: * Amenity to be provided with the handover of Phase 2.

** Amenity to be provided with the handover of Phase 3.

Big ambitions need more room to grow

We built an entire school in our township.

Just a short walk away from your home stands your township's very own school. The school is especially designed to equip each student with modern classrooms and sports facilities for holistic development.



Floor Plans

Just when you thought the park was our biggest space.

Enter any tower and you'll find two cores on each floor. Every core boasts three lifts for convenient access. The apartments are designed for maximum utility of space and are Vaastu compliant.



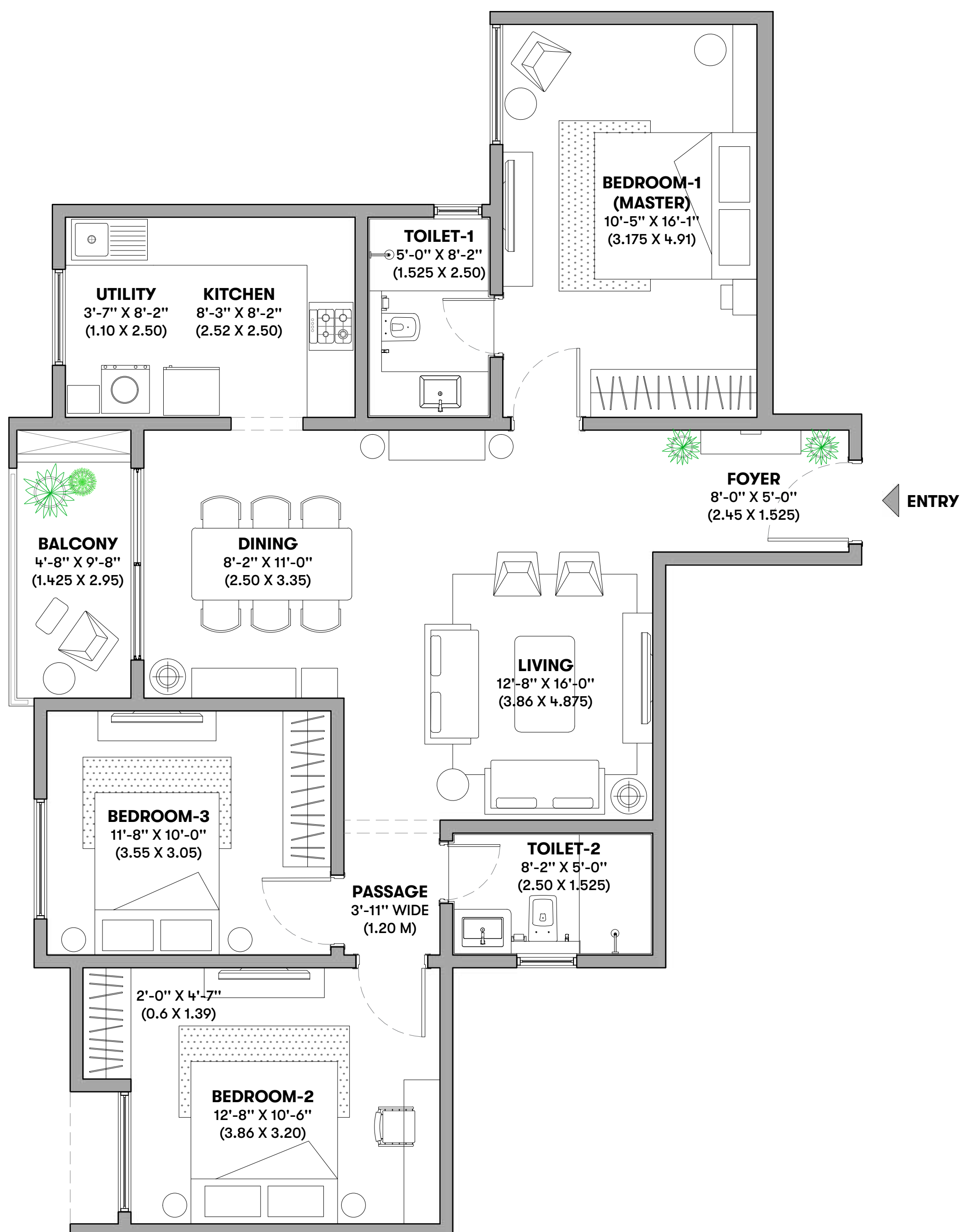
CGI artist's impression

3 BHK (3B - 2T)

Carpet Area as per RERA: **1007 SQ FT**

CREDAI Carpet Area: **1017 SQ FT**

Super Built Up Area: **1372 SQ FT**

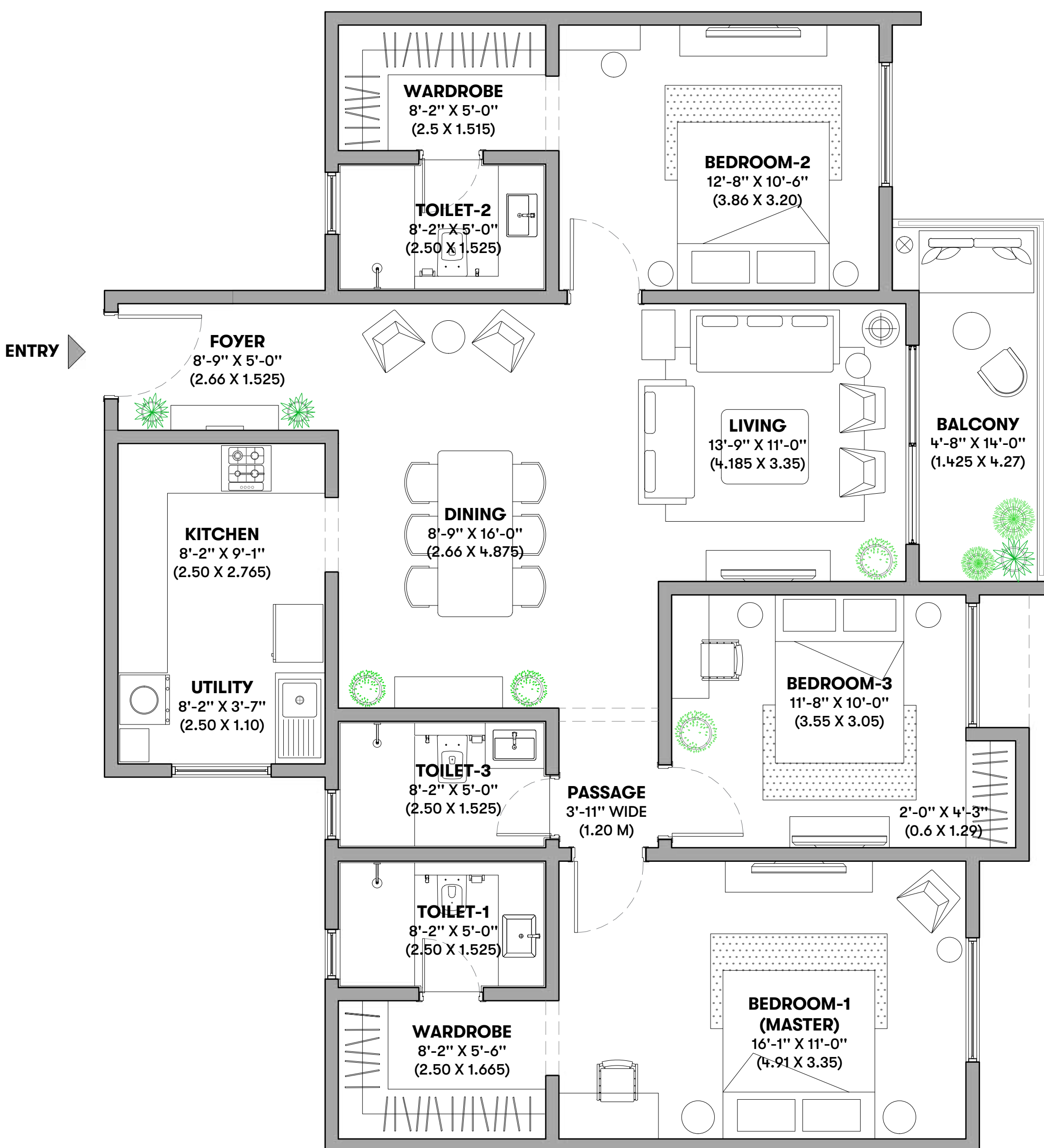


3 BHK (3B - 3T)

Carpet Area as per RERA: **1196 SQ FT**

CREDAI Carpet Area: **1207 SQ FT**

Super Built Up Area: **1630 SQ FT**

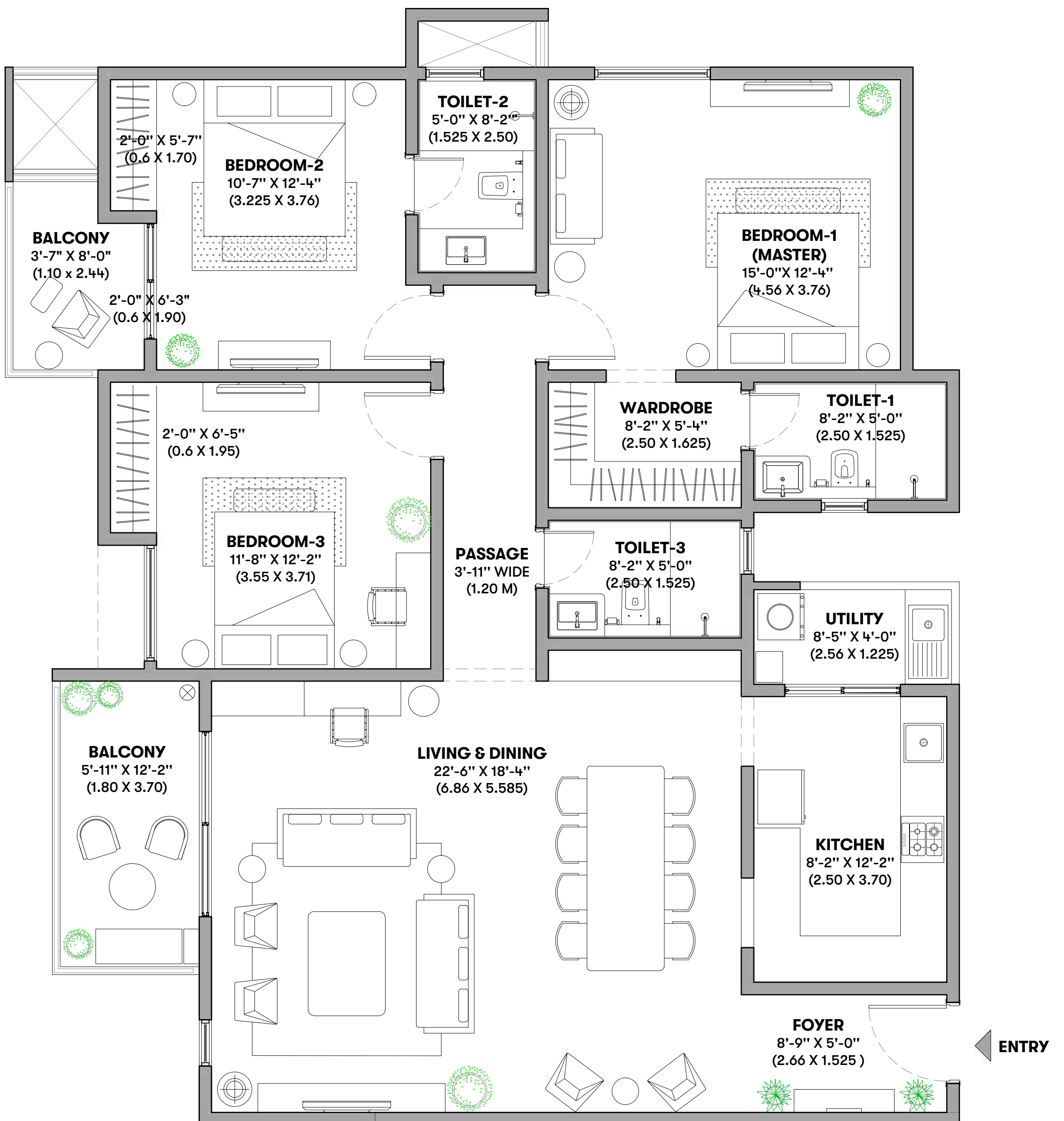


3 BHK (3B - 3T)

Carpet Area as per RERA: **1354 SQ FT**

CREDAI Carpet Area: **1447 SQ FT**

Super Built Up Area: **1937 SQ FT**

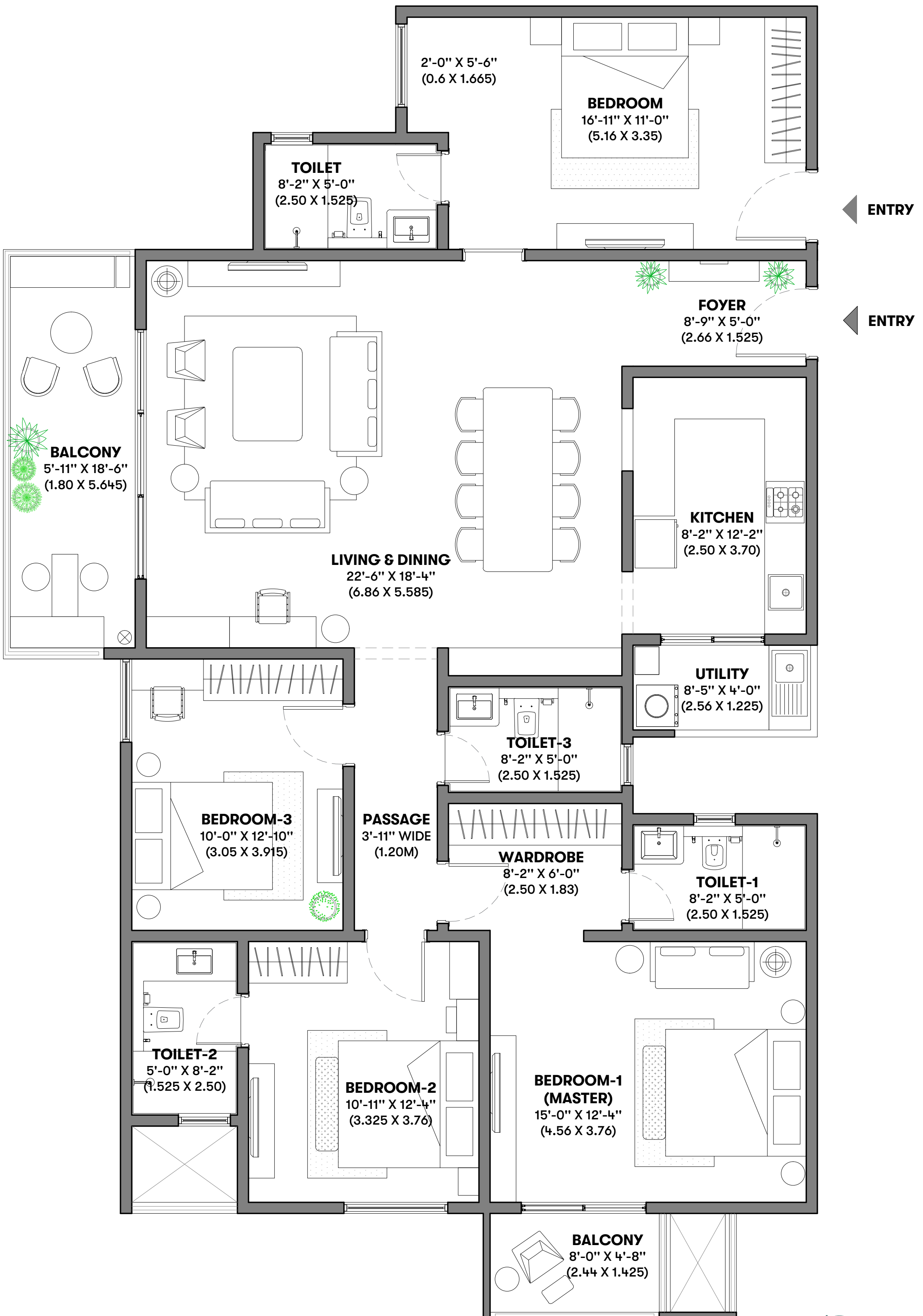


4 BHK (3B - 3T + STUDIO)

Carpet Area as per RERA: **1550 SQ FT (1308 + 242)**

CREDAI Carpet Area: **1677 SQ FT (1438 + 239)**

Super Built Up Area: **2253 SQ FT (1928 + 325)**



Specifications

Civil

Seismic resistant RCC structure using system formwork with concrete walls

Architecture



Doors

- *Engineered wooden doors with tubular core*

Main door

- *8 feet height engineered wooden doors with architrave in polished veneer*

Internal & toilet doors

- *Engineered wooden doors with architrave in laminate finish*

- *Dorset or equivalent hardware for all wooden doors with hinges*

- *Acoustic EPDM gasket (for noise reduction) for all doors*



Windows, Sliding Doors & Ventilators

- *3 track UPVC sliding doors & windows with mosquito net*

UPVC ventilators

Fixed/ openable with exhaust fans



Balcony Railings

Balcony

- *RCC parapet with MS top rail/ MS Railings with enamel paint finish*

Utility

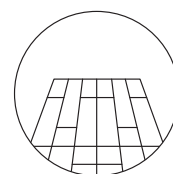
- *RCC parapet wall*



False Ceiling

Toilets

- *Grid false ceiling with PVC coated tiles*



Flooring & Wall Cladding

Living, dining & kitchen

- *Vitrified tiles*

Master bedroom

- *Laminated wooden flooring*

Other bedrooms

- *Vitrified flooring*

Bathroom

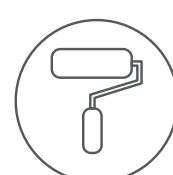
- Floor
Slip-resistant ceramic tiles
- Walls
Ceramic tiles

Balcony

- *Wooden finish ceramic tiles*

Utility

- *Ceramic tiles*



Paint

Internal walls

- *Acrylic emulsion*

External walls

- *Texture with exterior grade emulsion*

Ceiling

- *Oil bound distemper*

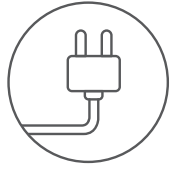
Plumbing, Electrical & Services



CP, Sanitary Fittings & Fixtures

- *Jaguar or equivalent water-efficient CP & Sanitary fixtures*

Note: Specifications only for 3 & 4 BHK apartments.



Electrical Fittings

- *Schneider switches or equivalent*
- *Data & telephone through fibre to the home*
- *Schneider or equivalent make distribution boards*



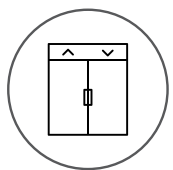
Grid Power & Backup power

- EB power
- *4 BHK - 7KW, 3 BHK - 5KW, 1 BHK - 3KW*
- DG power backup
- *50% of EB load for lighting circuits inside the apartments & 100% backup for lighting circuits, lifts & utilities*



Services

- *Provision for piped natural gas (PNG)*
- *Charging points for 2 & 4 wheelers, as per norms*
- *Water treatment plant*
- *Sewage treatment plant*



Elevators

- *Three lifts per core of a reputed make*



Safety & Security

- *Common area surveillance*

Green Features



Water Conservation

- *Multi piping system & dual flush system for sanitary*
- *All landscape maintained through recycled water*
- *Water-efficient fixtures*
- *Groundwater recharge*
- *Rain water harvesting*



Energy Conservation

- *Provision for solar heated water in one toilet of top floor apartments*
- *Energy-efficient lights in common areas*
- *Energy-efficient streetlights/ timer adjusted streetlights*



Solid Waste Management

- *Segregation at source*
- *Organic waste convertor*

This is a

CARBON HEALING HOME

Every carbon healing home is designed to give back to the earth through four very special features.

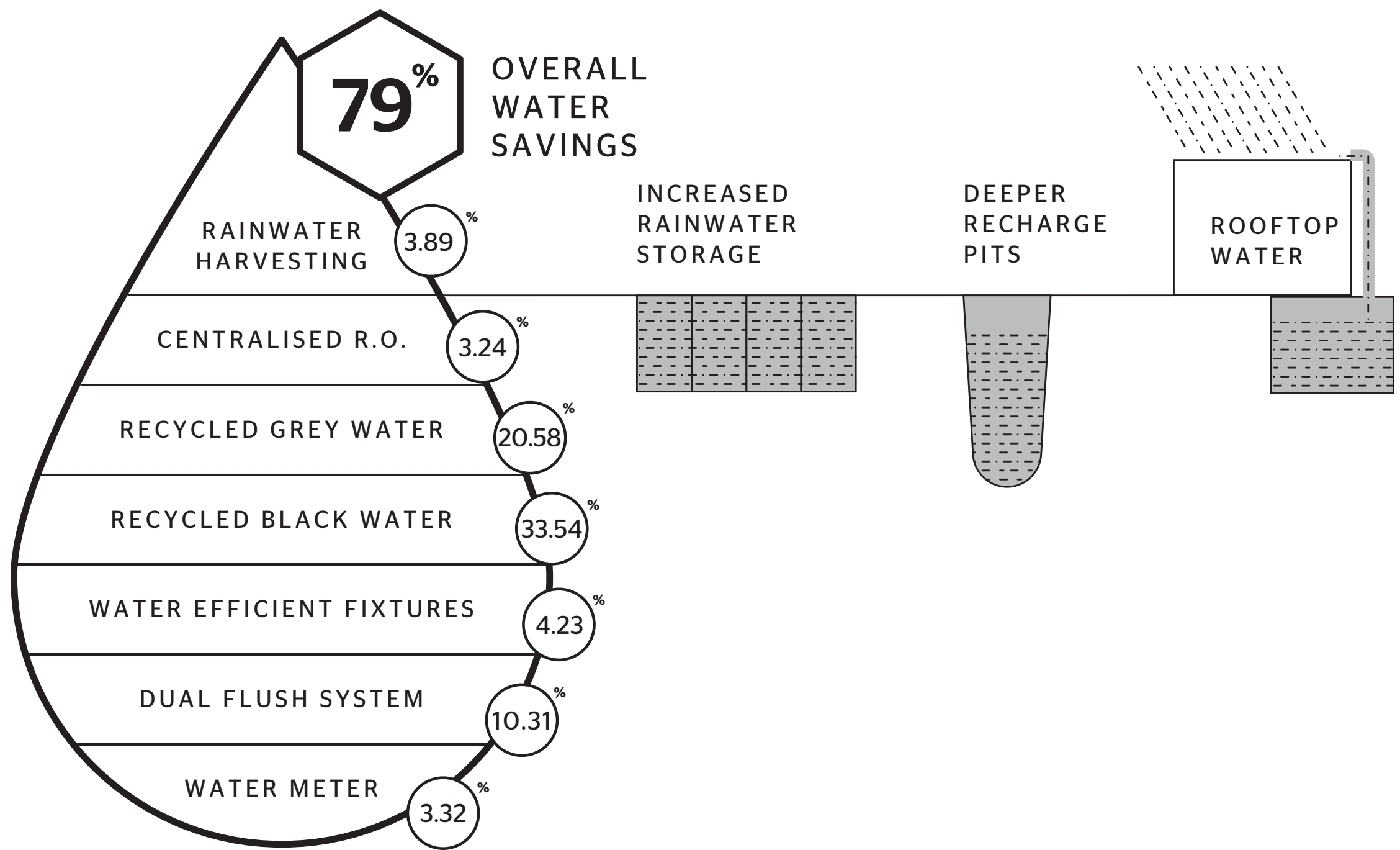


Disclaimer: The information contained in this section is for general information only. The information is provided by our 'Sustainability Services Consultants' and while we endeavor to keep the information up to date and correct, we make no representations or warranties of any kind, express or implied, about the completeness, accuracy, reliability, suitability or availability with respect to the information or related graphics. Any reliance you place on such information is therefore strictly at your own risk.



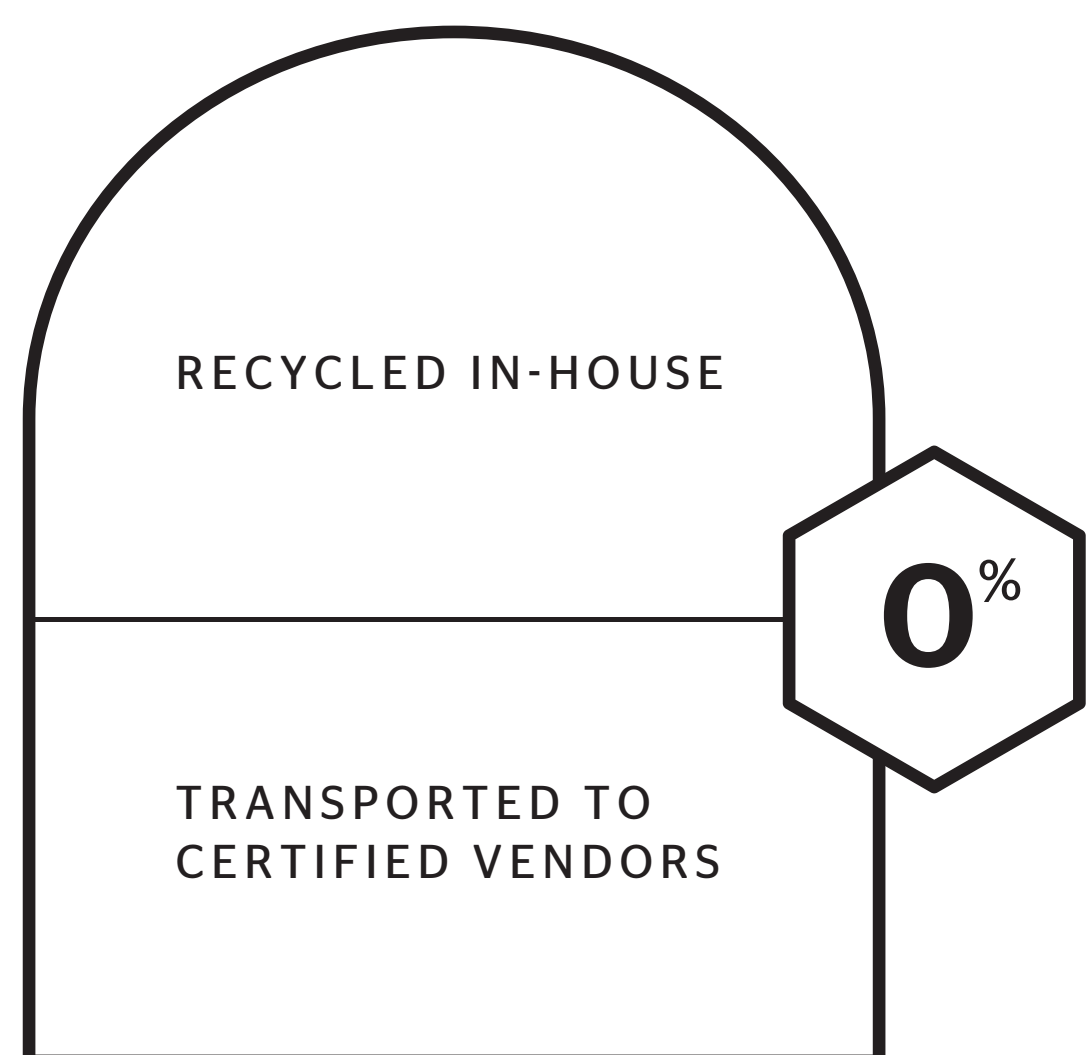
SPONGE EFFECT

DESIGNED TO UTILISE EVERY DROP OF WATER



ZERO OUT

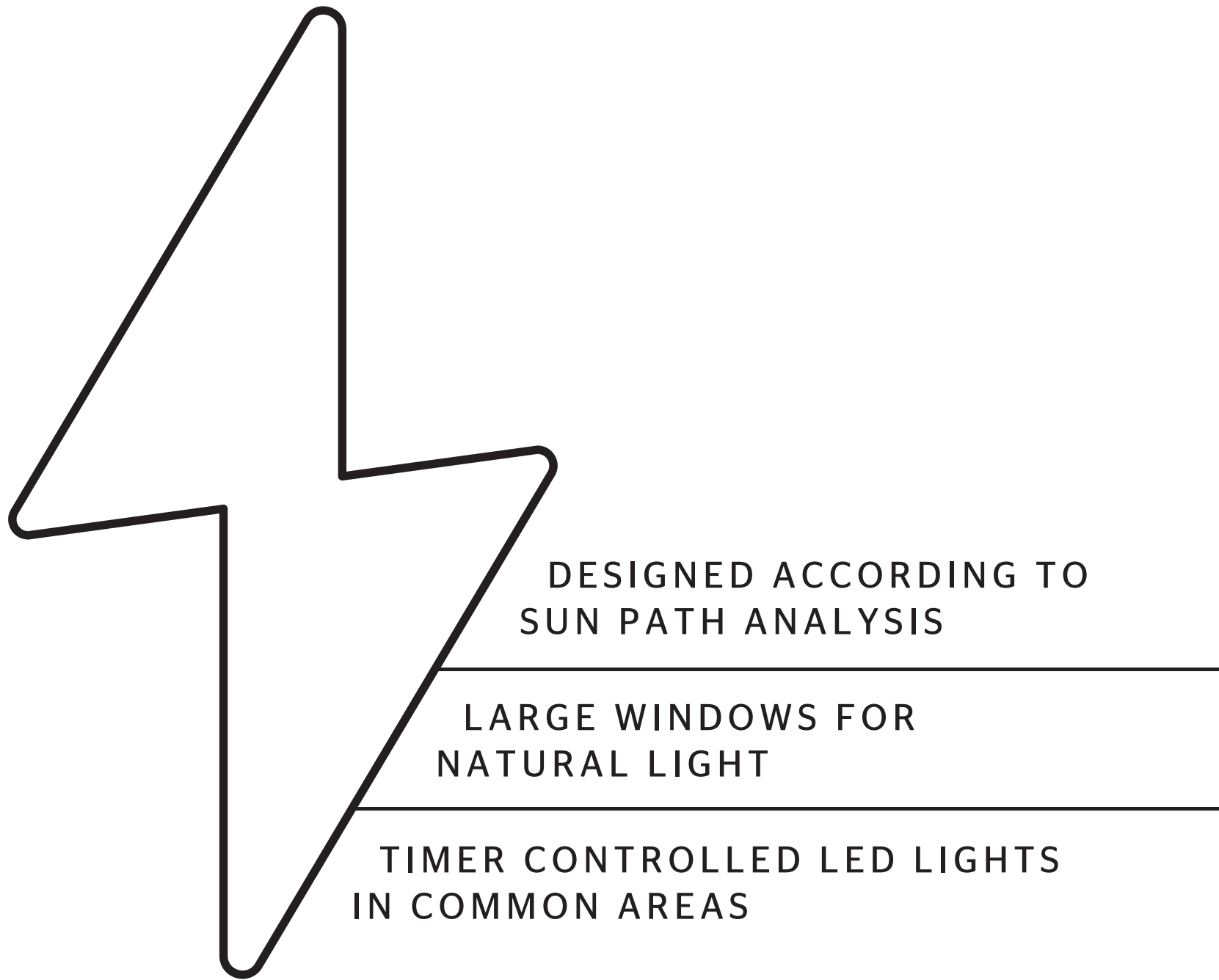
ZERO WASTE TO LANDFILL





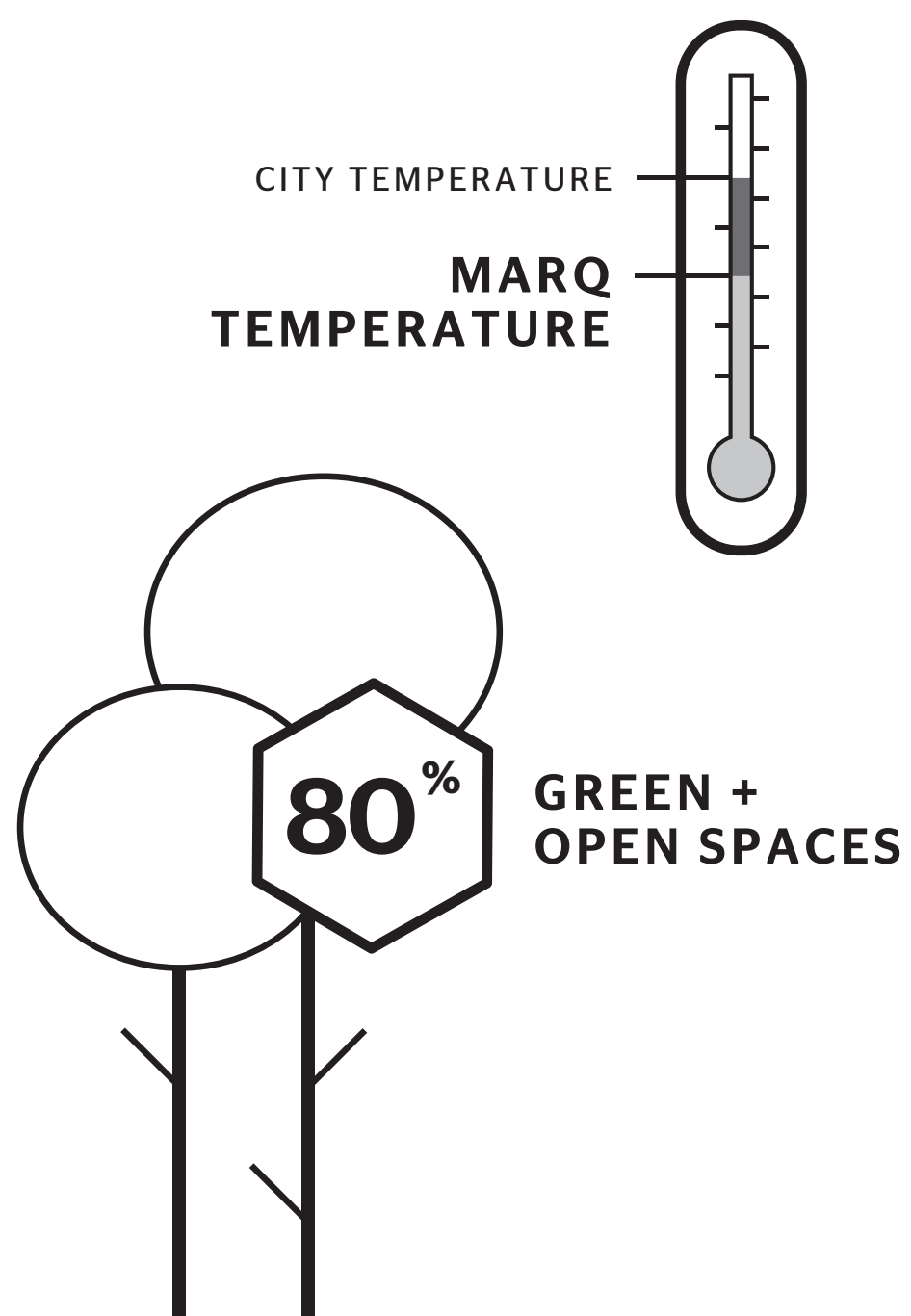
SMART POWER

TOTAL UTILISATION OF
RENEWABLE ENERGY SOURCES



CLIMATE CAPSULE

HIGHER GREEN COVER
FOR LOWER TEMPERATURES



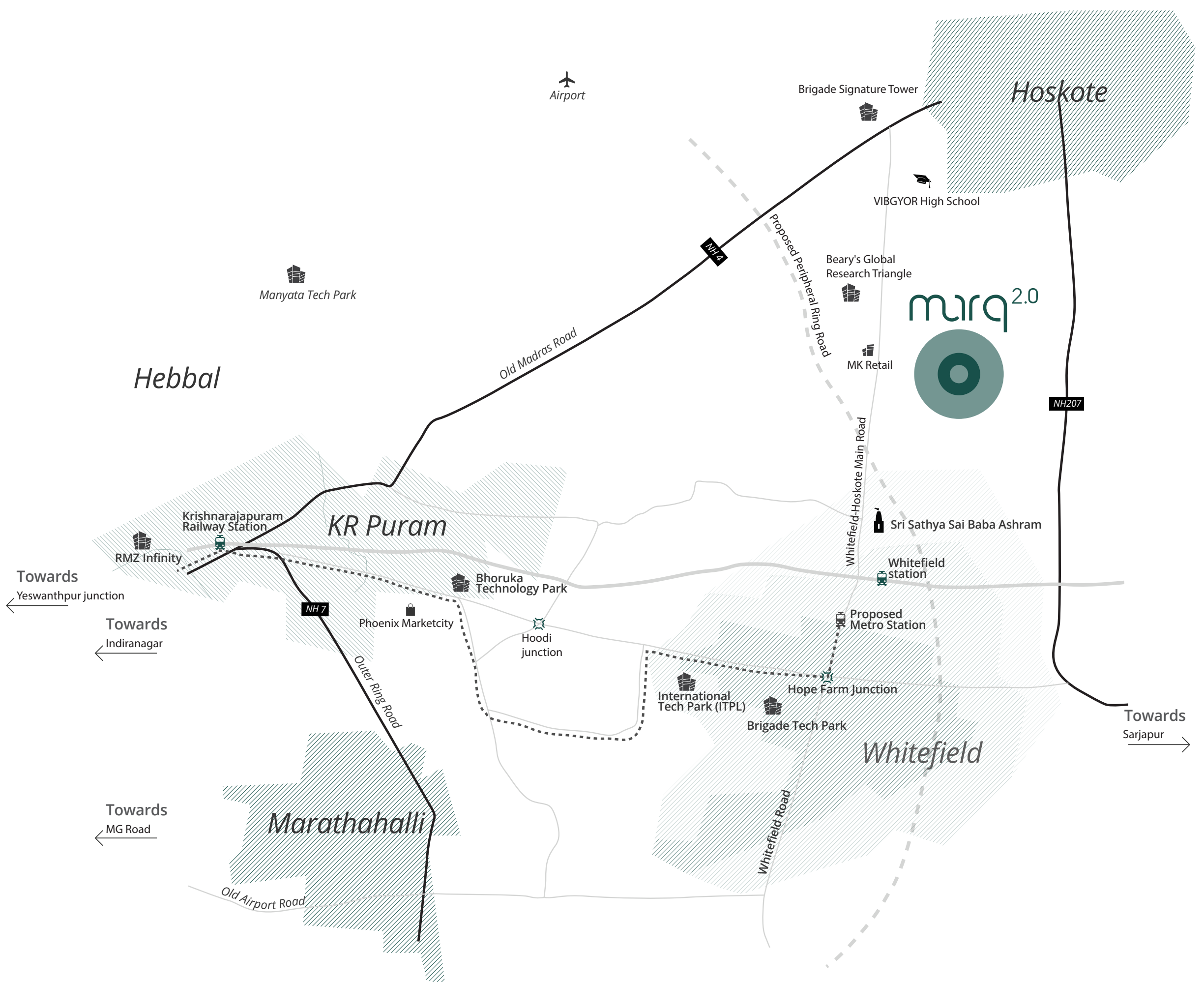
Find us at the heart of it all

Everything is close by when your home is as big as the world around you.

Marq stands tall in Whitefield – one of the fastest developing areas in Bangalore.

Whitefield is home to the biggest tech parks, Bangalore's best hospitals, entertainment districts, schools and more, and Marq plays neighbour to it all.

Find Marq just over 3 kms from the proposed Metro Station and 6.5 kms from ITPL.



Map not to scale

Within 1 km

- Red Rhino
- MK Retail
- State Bank of India
- Shell Petrol Pump

Within 5 kms

- Bearys Global Research Triangle
- Proposed Metro Station
- Sri Sathya Sai Baba Ashram
- Vibgyor High School

Within 10 kms

- Whitefield Police Station
- ITPL
- Inner Circle Municipal Park
- Old Madras Road

Prime Locations

- KR Puram
- Phoenix MarketCity
- Indiranagar
- International Airport

PRM/KA/RERA/1251/446/PR/240122/004654

Disclaimer: The Company does not guarantee or represent the information contained in this document, which is to be used for general information only. The Company does not guarantee or represent that the information contained within this document is correct. Any interested party should verify all the information including designs, plans, specifications, facilities, features, payment schedules, terms of sales, etc. independently with the Company prior to concluding any decision for buying in any of the project. The user of the brochure confirms that he/she has not relied on this information alone when making any booking/purchase in any project of the Company. The information, visuals, renders and creative depictions contained herein are artistic impressions, indicative in nature and are for general information purposes only. The actual design/colour/finish/construction/landscape could undergo changes based on changes in design, layouts, materials, site conditions, etc. Any furniture, paintings, or any items of personalized nature not specifically mentioned in the contract and shown in the images are only for the purpose of illustration and does not form part of the offering. Further, the renders/ visuals of the area beyond the project site are artistic in nature and may not depict the actual visuals. While every reasonable care has been taken in providing the information, under no circumstances the Company or its employees, managers or representatives shall be held liable for any loss or damage, special or consequential or otherwise, arising from the use of or reliance on information provided in the brochure without verifying the same independently with the Company. The contents provided herein are with all faults and on an "as is" and "as available" basis. No information given in this brochure creates a warranty or expand the scope of any warranty that cannot be disclaimed under the applicable laws.

Assetz Marq,
*(Next to Sai Laxmi Industries), Whitefield-Hoskote Main Road,
Kannamangala, Bangalore - 560 067.*

Assetz Property Group,
No. 30, Crescent Road, Bangalore 560 001.

Assetz

85489 77977
www.assetzproperty.com/marq