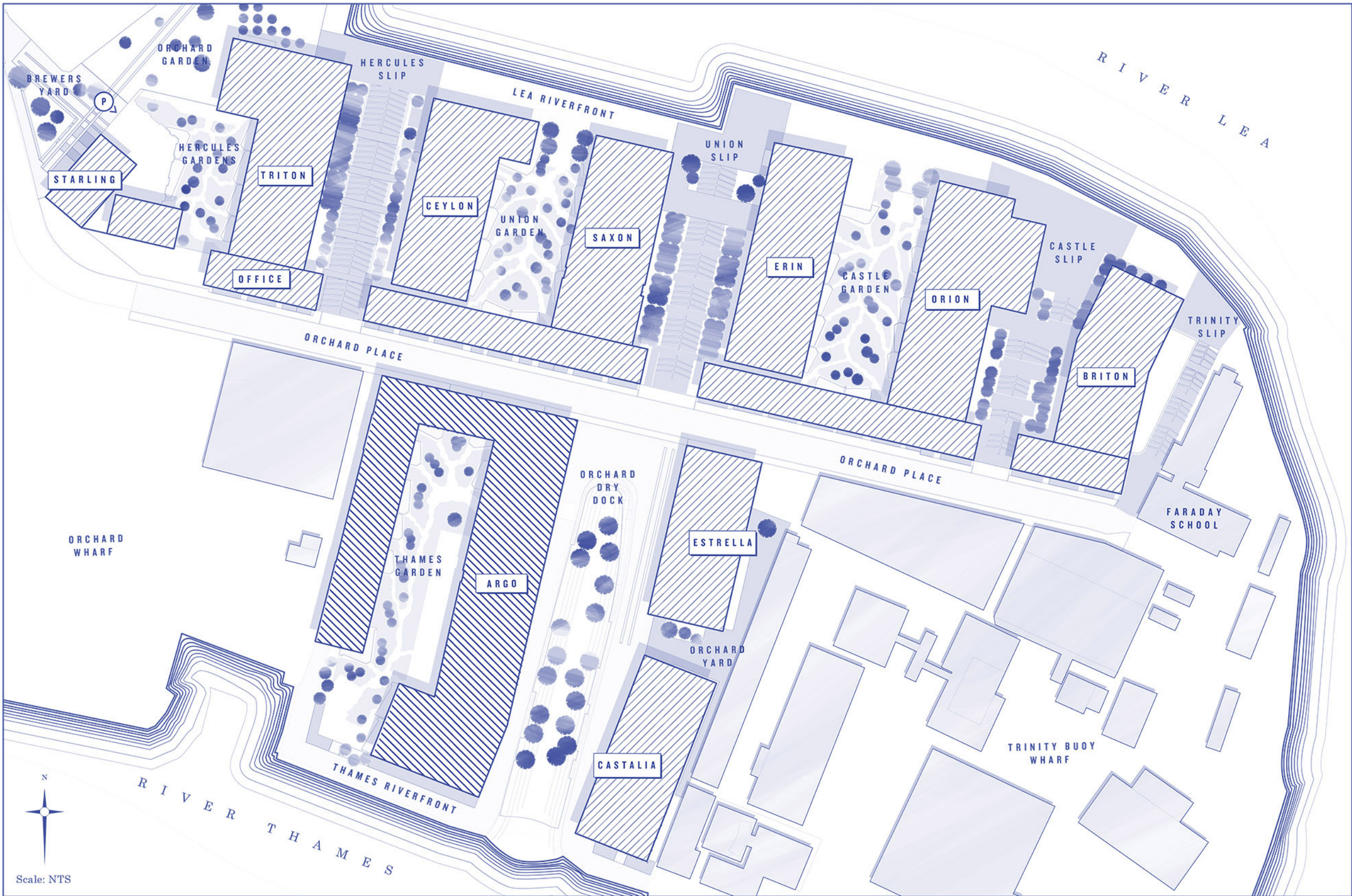


GOODLUCK HOPE

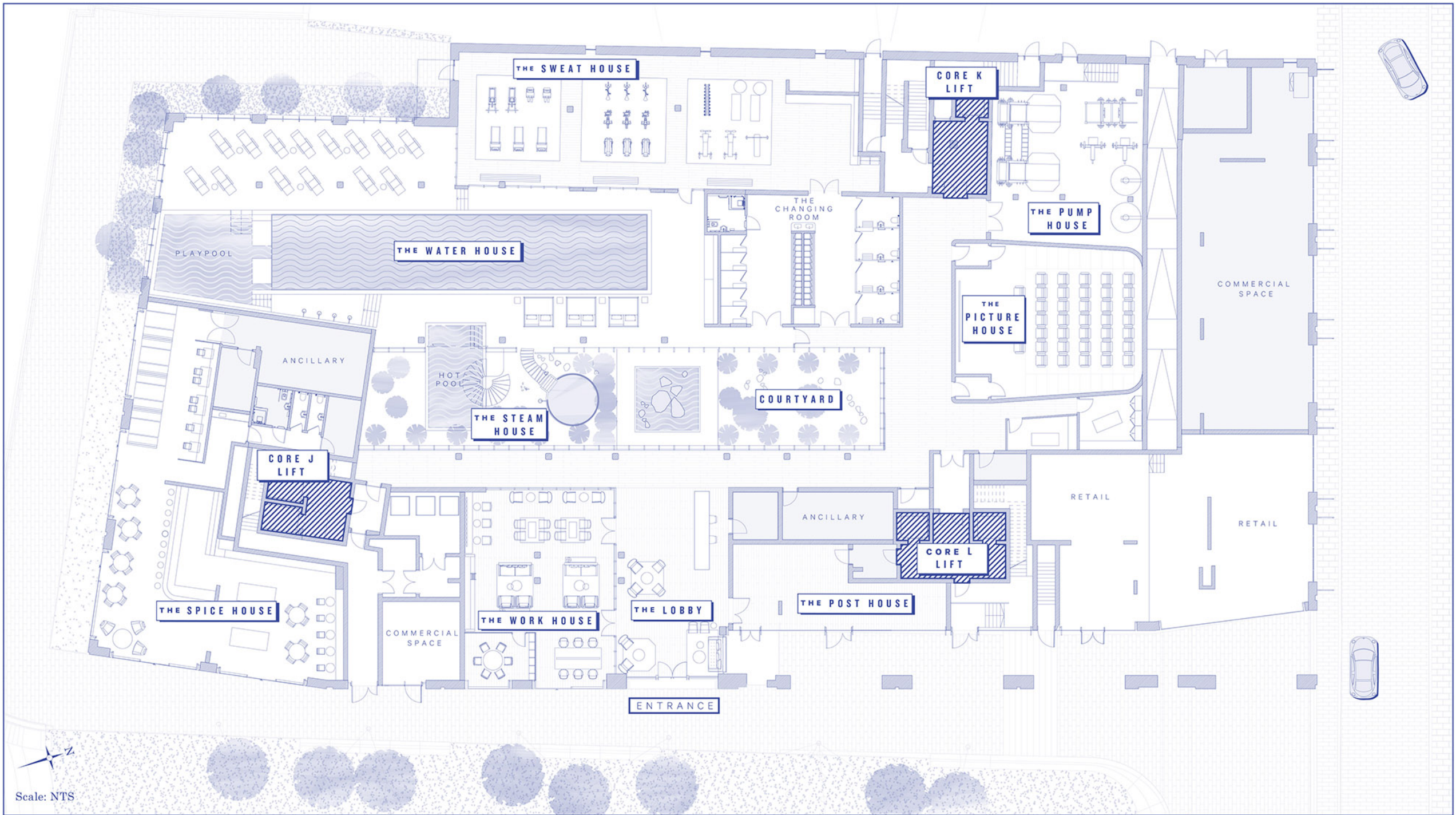
L O N D O N

ARGO





Scale: NTS



Scale: NTS

ARGO



**FLOOR
GF**

1595

The equal of any of the great private clubs in its design and member's only amenities, 'The 1595 Club' at Goodluck Hope offers an exclusive retreat from the outside world, where residents and guests can enjoy first-class facilities, purpose-built and beautifully designed to provide the finest in wellness, co-working and entertainment.

DISCLAIMER

This brochure and the information contained in it does not form part of any contract, and while reasonable effort has been made to ensure accuracy, this cannot be guaranteed and no representation or warranty is made in that regard. Apartment designs and layouts are indicative only and may change. Gardens do not include any planters or paviers as indicated on the floor plans. The specification of the apartments is the anticipated specification as at the date this brochure was prepared, but may be subject to change in accordance with permitted variances under the apartment sale contracts. Computer generated images and photos are indicative only. All sales remain subject to contract. All information regarding prospective commercial or retail tenants represents current intention only, and the final identity of the tenants may change. Fixtures and furnishings including wall painting and wall drawings shown in Computer Generated Images and photos are not standard or included in sales. Please consult your sales contract for information. Goodluck Hope is a marketing name only and will not necessarily form part of the approved postal address. Neither the agents nor any person in their employ has any authority to make or give any representation, warranty or guarantee (whether written or oral) in respect of or in relation to the development (or any parts thereof).

**J.1.09
TWO BEDROOM**
Internal Area
85.9 sq m / 925 sq ft
Living Area
5127 x 7665 mm
Bedroom 1
3100 x 3895 mm
Bedroom 2
3150 x 3600 mm
Balcony
7.2 sq m / 77 sq ft
Terrace
15.8 sq m / 170 sq ft

**J.1.10
ONE BEDROOM**
Internal Area
51.4 sq m / 553 sq ft
Living Area
3785 x 7225 mm
Bedroom 1
4389 x 3330 mm
Terrace
15.5 sq m / 166 sq ft

**J.1.07
ONE BEDROOM**
Internal Area
53.2 sq m / 573 sq ft
Living Area
6545 x 4412 mm
Bedroom 1
3100 x 3955 mm
Balcony
5.2 sq m / 56 sq ft

**J.1.01
SUITE**
Internal Area
43.2 sq m / 465 sq ft
Living Area
4578 x 4133 mm
Bedroom 1
3000 x 3940 mm
Balcony
5.2 sq m / 56 sq ft

**J.1.02
ONE BEDROOM**
Internal Area
52.7 sq m / 567 sq ft
Living Area
4176 x 6635 mm
Bedroom 1
3674 x 3395 mm
Balcony
5.7 sq m / 61 sq ft

**J.1.03
TWO BEDROOM**
Internal Area
71.6 sq m / 771 sq ft
Living Area
4205 x 6635 mm
Bedroom 1
3100 x 4382 mm
Bedroom 2
2800 x 3793 mm
Balcony
5.7sqm / 61 sq ft

**J.1.08
TWO BEDROOM**
Internal Area
82 sq m / 883 sq ft
Living Area
4707 x x 7315 mm
Bedroom 1
3100 x 3870 mm
Bedroom 2
3420 x 3035 mm
Balcony
7.2 sq m / 77 sq ft

**J.1.06
ONE BEDROOM**
Internal Area
50.4 sq m / 543 sq ft
Living Area
4492 x 7127 mm
Bedroom 1
3416 x 3315 mm
Balcony
5.7 sq m / 61 sq ft

**J.1.05
TWO BEDROOM**
Internal Area
73 sq m / 786 sq ft
Living Area
5070 x 6555 mm
Bedroom 1
3100 x 3605 mm
Bedroom 2
3400 x 3015 mm
Balcony
5.7 sq m / 61 sq ft

**J.1.04
TWO BEDROOM**
Internal Area
71.5 sq m / 770 sq ft
Living Area
4205 x 6460 mm
Bedroom 1
3091 x 4382 mm
Bedroom 2
2800 x 3792 mm
Balcony
5.7 sq m / 61 sq ft



Scale: NTS

ARGO

CORE J

FLOOR 1

08
07
06
04
03
02
01
GF



LEGEND

- B** Balcony
- C** Cupboard
- F** Fridge
- L** Laundry
- T** Terrace
- W** Wardrobe

DISCLAIMER

This brochure and the information contained in it does not form part of any contract, and while reasonable effort has been made to ensure accuracy, this cannot be guaranteed and no representation or warranty is made in that regard. Apartment designs and layouts are indicative only and may change. Gardens do not include any planters or paviers as indicated on the floor plans. The specification of the apartments is the anticipated specification as at the date this brochure was prepared, but may be subject to change in accordance with permitted variances under the apartment sale contracts. Computer generated images and photos are indicative only. All sales remain subject to contract. All information regarding prospective commercial or retail tenants represents current intention only, and the final identity of the tenants may change. Fixtures and furnishings including wall painting and wall dressings shown in Computer Generated Images and photos are not standard or included in sales. Please consult your sales contract for information. Goodluck Home is a marketing name only and will not necessarily form part of the approved postal address. Neither the agents nor any person in their employ has any authority to make or give any representation, warranty or guarantee (whether written or oral) in respect of or in relation to the development (or any parts thereof).

**J.2.09
TWO BEDROOM**

Internal Area
85.9 sq m / 925 sq ft
Living Area
5127 x 7665 mm
Bedroom 1
3100 x 3895 mm
Bedroom 2
3150 x 3600 mm
Balcony
7.2 sq m / 77 sq ft

**J.2.10
ONE BEDROOM**

Internal Area
59 sq m / 635 sq ft
Living Area
4835 x 7225 mm
Bedroom 1
4695 x 3330 mm
Balcony
5.2 sq m / 56 sq ft

**J.2.07
ONE BEDROOM**

Internal Area
53.2 sq m / 573 sq ft
Living Area
6545 x 4412 mm
Bedroom 1
3100 x 3955 mm
Balcony
5.2 sq m / 56 sq ft

**J.2.01
ONE BEDROOM**

Internal Area
49.7 sq m / 535 sq ft
Living Area
5526 x 4129 mm
Bedroom 1
2875 x 3405 mm
Balcony
4.8 sq m / 51 sq ft

**J.2.02
ONE BEDROOM**

Internal Area
52.7 sq m / 567 sq ft
Living Area
4176 x 6635 mm
Bedroom 1
3674 x 3395 mm
Balcony
5.7 sq m / 61 sq ft

**J.2.03
TWO BEDROOM**

Internal Area
71.6 sq m / 771 sq ft
Living Area
4205 x 6635 mm
Bedroom 1
3100 x 4382 mm
Bedroom 2
2800 x 3793 mm
Balcony
5.7 sq m / 61 sq ft

**J.2.08
TWO BEDROOM**

Internal Area
82 sq m / 883 sq ft
Living Area
4707 x 7315 mm
Bedroom 1
3100 x 3870 mm
Bedroom 2
3420 x 3035 mm
Balcony
7.2 sq m / 77 sq ft

**J.2.06
ONE BEDROOM**

Internal Area
50.4 sq m / 543 sq ft
Living Area
4492 x 7127 mm
Bedroom 1
3416 x 3315 mm
Balcony
5.7 sq m / 61 sq ft

**J.2.05
TWO BEDROOM**

Internal Area
73 sq m / 786 sq ft
Living Area
5070 x 6555 mm
Bedroom 1
3100 x 3605 mm
Bedroom 2
3400 x 3015 mm
Balcony
5.7 sq m / 61 sq ft

**J.2.04
TWO BEDROOM**

Internal Area
71.5 sq m / 770 sq ft
Living Area
4205 x 6460 mm
Bedroom 1
3091 x 4382 mm
Bedroom 2
2800 x 3792 mm
Balcony
5.7 sq m / 61 sq ft



Scale: NTS

ARGO

**CORE
J**

**FLOOR
2**

08
07
06
05
04
03
02
01
GF



LEGEND

- B** Balcony
- C** Cupboard
- F** Fridge
- L** Laundry
- T** Terrace
- W** Wardrobe

DISCLAIMER

This brochure and the information contained in it does not form part of any contract, and while reasonable effort has been made to ensure accuracy, this cannot be guaranteed and no representation or warranty is made in that regard. Apartment designs and layouts are indicative only and may change. Gardens do not include any planters or paviers as indicated on the floor plans. The specification of the apartments is the anticipated specification as at the date this brochure was prepared, but may be subject to change in accordance with permitted variances under the apartment sale contracts. Computer generated images and photos are indicative only. All sales remain subject to contract. All information regarding prospective commercial or retail tenants represents current intention only, and the final identity of the tenants may change. Fixtures and furnishings including wall painting and wall dressings shown in Computer Generated Images and photos are not standard or included in sales. Please consult your sales contract for information. Goodluck Hope is a marketing name only and will not necessarily form part of the approved postal address. Neither the agents nor any person in their employ has any authority to make or give any representation, warranty or guarantee (whether written or oral) in respect of or in relation to the development (or any parts thereof).

**J.3.09
TWO BEDROOM**

Internal Area
85.9 sq m / 925 sq ft
Living Area
5127 x 7665 mm
Bedroom 1
3100 x 3895 mm
Bedroom 2
3150 x 3600 mm
Balcony
7.2 sq m / 77 sq ft

**J.3.10
ONE BEDROOM**

Internal Area
59 sq m / 635 sq ft
Living Area
4835 x 7225 mm
Bedroom 1
4695 x 3330 mm
Balcony
5.2 sq m / 56 sq ft

**J.3.07
ONE BEDROOM**

Internal Area
53.2 sq m / 573 sq ft
Living Area
6545 x 4412 mm
Bedroom 1
3100 x 3955 mm
Balcony
5.2 sq m / 56 sq ft

**J.3.01
ONE BEDROOM**

Internal Area
49.7 sq m / 535 sq ft
Living Area
5526 x 4129 mm
Bedroom 1
2875 x 3405 mm
Balcony
4.8 sq m / 51 sq ft

**J.3.02
ONE BEDROOM**

Internal Area
52.7 sq m / 567 sq ft
Living Area
4176 x 6635 mm
Bedroom 1
3674 x 3395 mm
Balcony
5.7 sq m / 61 sq ft

**J.3.03
TWO BEDROOM**

Internal Area
71.6 sq m / 771 sq ft
Living Area
4205 x 6635 mm
Bedroom 1
3100 x 4382 mm
Bedroom 2
2800 x 3793 mm
Balcony
5.7 sq m / 61 sq ft

**J.3.08
TWO BEDROOM**

Internal Area
82 sq m / 883 sq ft
Living Area
4707 x 7315 mm
Bedroom 1
3100 x 3870 mm
Bedroom 2
3420 x 3035 mm
Balcony
7.2 sq m / 77 sq ft

**J.3.06
ONE BEDROOM**

Internal Area
50.4 sq m / 543 sq ft
Living Area
4492 x 7127 mm
Bedroom 1
3416 x 3315 mm
Balcony
5.7 sq m / 61 sq ft

**J.3.05
TWO BEDROOM**

Internal Area
73 sq m / 786 sq ft
Living Area
5070 x 6555 mm
Bedroom 1
3100 x 3605 mm
Bedroom 2
3400 x 3015 mm
Balcony
5.7 sq m / 61 sq ft

**J.3.04
TWO BEDROOM**

Internal Area
71.5 sq m / 770 sq ft
Living Area
4205 x 6460 mm
Bedroom 1
3091 x 4382 mm
Bedroom 2
2800 x 3792 mm
Balcony
5.7 sq m / 61 sq ft



Scale: NTS

ARGO

**CORE
J**

**FLOOR
3**

08
07
06
05
04
03
02
01
GF



LEGEND

- B** Balcony
- C** Cupboard
- F** Fridge
- L** Laundry
- T** Terrace
- W** Wardrobe

DISCLAIMER

This brochure and the information contained in it does not form part of any contract, and while reasonable effort has been made to ensure accuracy, this cannot be guaranteed and no representation or warranty is made in that regard. Apartment designs and layouts are indicative only and may change. Gardens do not include any planters or paviers as indicated on the floor plans. The specification of the apartments is the anticipated specification as at the date this brochure was prepared, but may be subject to change in accordance with permitted variances under the apartment sale contracts. Computer generated images and photos are indicative only. All sales remain subject to contract. All information regarding prospective commercial or retail tenants represents current intention only, and the final identity of the tenants may change. Fixtures and furnishings including wall painting and wall dressings shown in Computer Generated Images and photos are not standard or included in sales. Please consult your sales contract for information. *Greenlick Hope* is a marketing name only and will not necessarily form part of the approved postal address. Neither the agents nor any person in their employ has any authority to make or give any representation, warranty or guarantee (whether written or oral) in respect of or in relation to the development (or any parts thereof).

**J.4.09
TWO BEDROOM**

Internal Area
85.9 sq m / 925 sq ft
Living Area
5127 x 7665 mm
Bedroom 1
3100 x 3895 mm
Bedroom 2
3150 x 3600 mm
Balcony
7.2 sq m / 77 sq ft

**J.4.10
ONE BEDROOM**

Internal Area
59 sq m / 635 sq ft
Living Area
4835 x 7225 mm
Bedroom 1
4695 x 3330 mm
Balcony
5.2 sq m / 56 sq ft

**J.4.07
ONE BEDROOM**

Internal Area
53.2 sq m / 573 sq ft
Living Area
6545 x 4412 mm
Bedroom 1
3100 x 3955 mm
Balcony
5.2 sq m / 56 sq ft

**J.4.01
ONE BEDROOM**

Internal Area
49.7 sq m / 535 sq ft
Living Area
5526 x 4129 mm
Bedroom 1
2875 x 3405 mm
Balcony
4.8 sq m / 51 sq ft

**J.4.02
ONE BEDROOM**

Internal Area
52.7 sq m / 567 sq ft
Living Area
4176 x 6635 mm
Bedroom 1
3674 x 3395 mm
Balcony
5.7 sq m / 61 sq ft

**J.4.03
TWO BEDROOM**

Internal Area
71.6 sq m / 771 sq ft
Living Area
4205 x 6635 mm
Bedroom 1
3100 x 4382 mm
Bedroom 2
2800 x 3793 mm
Balcony
5.7 sq m / 61 sq ft

**J.4.08
TWO BEDROOM**

Internal Area
82 sq m / 883 sq ft
Living Area
4707 x 7315 mm
Bedroom 1
3100 x 3870 mm
Bedroom 2
3420 x 3035 mm
Balcony
7.2 sq m / 77 sq ft

**J.4.06
ONE BEDROOM**

Internal Area
50.4 sq m / 543 sq ft
Living Area
4492 x 7127 mm
Bedroom 1
3416 x 3315 mm
Balcony
5.7 sq m / 61 sq ft

**J.4.05
TWO BEDROOM**

Internal Area
73 sq m / 786 sq ft
Living Area
5070 x 6555 mm
Bedroom 1
3100 x 3605 mm
Bedroom 2
3400 x 3015 mm
Balcony
5.7 sq m / 61 sq ft

**J.4.04
TWO BEDROOM**

Internal Area
71.5 sq m / 770 sq ft
Living Area
4205 x 6460 mm
Bedroom 1
3091 x 4382 mm
Bedroom 2
2800 x 3792 mm
Balcony
5.7 sq m / 61 sq ft



Scale: NTS

ARGO

**CORE
J**

**FLOOR
4**

08
07
06
05
04
03
02
01
GF



LEGEND

- B** Balcony
- C** Cupboard
- F** Fridge
- L** Laundry
- T** Terrace
- W** Wardrobe

DISCLAIMER

This brochure and the information contained in it does not form part of any contract, and while reasonable effort has been made to ensure accuracy, this cannot be guaranteed and no representation or warranty is made in that regard. Apartment designs and layouts are indicative only and may change. Gardens do not include any planters or paviers as indicated on the floor plans. The specification of the apartments is the anticipated specification as at the date this brochure was prepared, but may be subject to change in accordance with permitted variances under the apartment sale contracts. Computer generated images and photos are indicative only. All sales remain subject to contract. All information regarding prospective commercial or retail tenants represents current intention only, and the final identity of the tenants may change. Fixtures and furnishings including wall painting and wall dressings shown in Computer Generated Images and photos are not standard or included in sales. Please consult your sales contract for information. Kinetics Hope is a marketing name only and will not necessarily form part of the approved postal address. Neither the agents nor any person in their employ has any authority to make or give any representation, warranty or guarantee (whether written or oral) in respect of or in relation to the development (or any parts thereof).

**J.5.07
TWO BEDROOM**

Internal Area
85.9 sq m / 925 sq ft
Living Area
5127 x 7665 mm
Bedroom 1
3100 x 3895 mm
Bedroom 2
3150 x 3600 mm
Balcony
7.2 sq m / 77 sq ft

**J.5.08
ONE BEDROOM**

Internal Area
59 sq m / 635 sq ft
Living Area
4835 x 7225 mm
Bedroom 1
4695 x 3330 mm
Balcony
5.2 sq m / 56 sq ft

**J.5.05
ONE BEDROOM**

Internal Area
53 sq m / 570 sq ft
Living Area
4412 x 6545 mm
Bedroom 1
3100 x 3955 mm
Balcony
7.2 sq m / 77 sq ft

**J.5.01
TWO BEDROOM**

Internal Area
71.2 sq m / 766 sq ft
Living Area
5035 x 6635 mm
Bedroom 1
3100 x 3685 mm
Bedroom 2
3400 x 3095 mm
Balcony
5.7 sq m / 61 sq ft

**J.5.02
ONE BEDROOM**

Internal Area
48.8 sq m / 525 sq ft
Living Area
3913 x 6636 mm
Bedroom 1
3137 x 3605 mm
Balcony
5.7 sq m / 61 sq ft

**J.5.06
TWO BEDROOM**

Internal Area
82 sq m / 883 sq ft
Living Area
4707 x 7315 mm
Bedroom 1
3100 x 3870 mm
Bedroom 2
3420 x 3035 mm
Balcony
7.2 sq m / 77 sq ft

**J.5.04
TWO BEDROOM**

Internal Area
71.2 sq m / 766 sq ft
Living Area
5035 x 6555 mm
Bedroom 1
3100 x 3605 mm
Bedroom 2
3400 x 3015 mm
Balcony
5.7 sq m / 61 sq ft

**J.5.03
ONE BEDROOM**

Internal Area
48.4 sq m / 521 sq ft
Living Area
4239 x 6555 mm
Bedroom 1
3137 x 3605 mm
Balcony
5.7 sq m / 61 sq ft



Scale: NTS

ARGO

**CORE
J**

**FLOOR
5**

08
07
06
05
04
03
02
01
GF



LEGEND

- B** Balcony
- C** Cupboard
- F** Fridge
- L** Laundry
- T** Terrace
- W** Wardrobe

DISCLAIMER

This brochure and the information contained in it does not form part of any contract, and while reasonable effort has been made to ensure accuracy, this cannot be guaranteed and no representation or warranty is made in that regard. Apartment designs and layouts are indicative only and may change. Gardens do not include any planters or paviers as indicated on the floor plans. The specification of the apartments is the anticipated specification as at the date this brochure was prepared, but may be subject to change in accordance with permitted variances under the apartment sale contracts. Computer generated images and photos are indicative only. All sales remain subject to contract. All information regarding prospective commercial or retail tenants represents current intention only, and the final identity of the tenants may change. Fixtures and furnishings including wall painting and wall dressings shown in Computer Generated Images and photos are not standard or included in sales. Please consult your sales contract for information. Goodluck Hope is a marketing name only and will not necessarily form part of the approved postal address. Neither the agents nor any person in their employ has any authority to make or give any representation, warranty or guarantee (whether written or oral) in respect of or in relation to the development (or any parts thereof).

**J.6.05
TWO BEDROOM**

Internal Area
85.9 sq m / 925 sq ft
Living Area
5127 x 7665 mm
Bedroom 1
3100 x 3895 mm
Bedroom 2
3150 x 3600 mm
Balcony
7.2 sq m / 77 sq ft

**J.6.06
ONE BEDROOM**

Internal Area
59 sq m / 635 sq ft
Living Area
4835 x 7225 mm
Bedroom 1
4695 x 3330 mm
Balcony
7.2 sq m / 77 sq ft

**J.6.03
ONE BEDROOM**

Internal Area
53 sq m / 570 sq ft
Living Area
4412 x 6545 mm
Bedroom 1
3100 x 3955 mm
Balcony
5.2 sq m / 56 sq ft

**J.6.04
TWO BEDROOM**

Internal Area
82 sq m / 883 sq ft
Living Area
4707 x x 7315 mm
Bedroom 1
3100 x 3870 mm
Bedroom 2
3420 x 3035 mm
Balcony
7.2 sq m / 77 sq ft



Scale: NTS

ARGO

**CORE
J**

**FLOOR
6**

08
07
06
05
04
03
02
01
GF



LEGEND

- B** Balcony
- C** Cupboard
- F** Fridge
- L** Laundry
- T** Terrace
- W** Wardrobe

DISCLAIMER

This brochure and the information contained in it does not form part of any contract, and while reasonable effort has been made to ensure accuracy, this cannot be guaranteed and no representation or warranty is made in that regard. Apartment designs and layouts are indicative only and may change. Gardens do not include any planters or paviers as indicated on the floor plans. The specification of the apartments is the anticipated specification as at the date this brochure was prepared, but may be subject to change in accordance with permitted variances under the apartment sale contracts. Computer generated images and photos are indicative only. All sales remain subject to contract. All information regarding prospective commercial or retail tenants represents current intention only, and the final identity of the tenants may change. Fixtures and furnishings including wall painting and wall dressings shown in Computer Generated Images and photos are not standard or included in sales. Please consult your sales contract for information. Goodluck Hope is a marketing name only and will not necessarily form part of the approved postal address. Neither the agents nor any person in their employ has any authority to make or give any representation, warranty or assurance (whether written or oral) in respect of or in relation to the development (or any parts thereof).

**J.7.04
ONE BEDROOM**

Internal Area
59 sq m / 635 sq ft
Living Area
4835 x 7225 mm
Bedroom 1
4695 x 3330 mm
Balcony
7.2 sq m / 77 sq ft

**J.7.03
TWO BEDROOM**

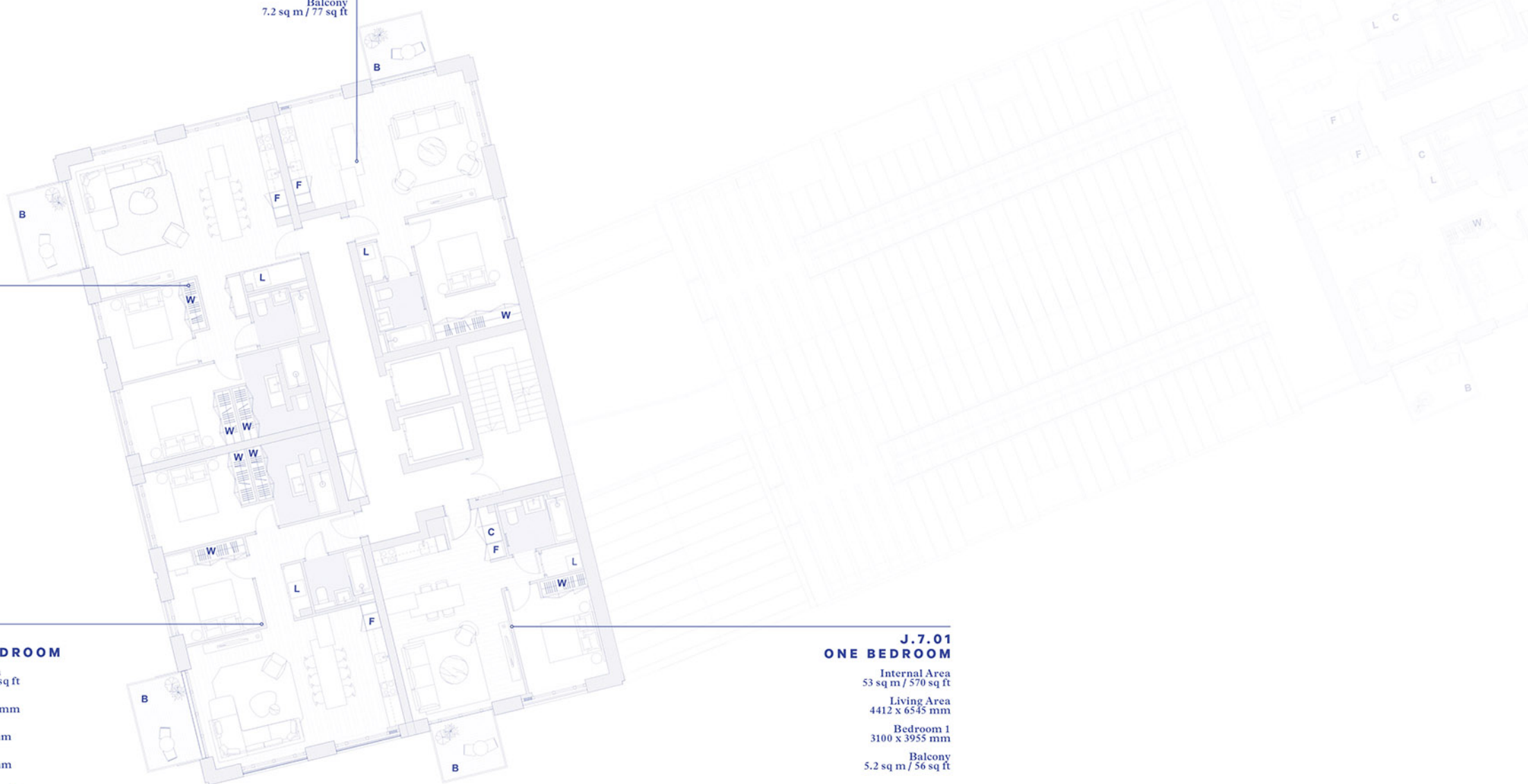
Internal Area
85.9 sq m / 925 sq ft
Living Area
5127 x 7665 mm
Bedroom 1
3100 x 3895 mm
Bedroom 2
3150 x 3600 mm
Balcony
7.2 sq m / 77 sq ft

**J.7.02
TWO BEDROOM**

Internal Area
82 sq m / 883 sq ft
Living Area
4707 x x 7315 mm
Bedroom 1
3100 x 3870 mm
Bedroom 2
3420 x 3035 mm
Balcony
7.2 sq m / 77 sq ft

**J.7.01
ONE BEDROOM**

Internal Area
53 sq m / 570 sq ft
Living Area
4412 x 6545 mm
Bedroom 1
3100 x 3955 mm
Balcony
5.2 sq m / 56 sq ft



Scale: NTS

ARGO

**CORE
J**

**FLOOR
7**

08
07
06
04
03
02
01
GF



LEGEND

- B** Balcony
- C** Cupboard
- F** Fridge
- L** Laundry
- T** Terrace
- W** Wardrobe

DISCLAIMER

This brochure and the information contained in it does not form part of any contract, and while reasonable effort has been made to ensure accuracy, this cannot be guaranteed and no representation or warranty is made in that regard. Apartment designs and layouts are indicative only and may change. Gardens do not include any planters or paviers as indicated on the floor plans. The specification of the apartments is the anticipated specification as at the date this brochure was prepared, but may be subject to change in accordance with permitted variances under the apartment sale contracts. Computer generated images and photos are indicative only. All sales remain subject to contract. All information regarding prospective commercial or retail tenants represents current intention only, and the final identity of the tenants may change. Fixtures and furnishings including wall painting and wall dressings shown in Computer Generated Images and photos are not standard or included in sales. Please consult your sales contract for information. Gravelock Hope is a marketing name only and will not necessarily form part of the approved postal address. Neither the agents nor any person in their employ has any authority to make or give any representation, warranty or guarantee (whether written or oral) in respect of or in relation to the development (or any parts thereof).

**K.1.03
THREE BEDROOM**

Internal Area
126.3sq m / 1359 sq ft
Living Area
5164 x 8777 mm
Bedroom 1
3100 x 4360 mm
Bedroom 2
2800 x 3730 mm
Bedroom 3
2800 x 3730 mm
Terrace
21.6 sq m / 232 sq ft

**K.1.01
ONE BEDROOM**

Internal Area
50.1 sq m / 539 sq ft
Living Area
4035 x 7005 mm
Bedroom 1
3400 x 3020 mm
Terrace
10.4 sq m / 111 sq ft

**K.1.07
ONE BEDROOM**

Internal Area
53.3 sq m / 574 sq ft
Living Area
6980 x 4735 mm
Bedroom 1
3100 x 3865 mm
Terrace
13.8 sq m / 148 sq ft

**K.1.04
SUITE**

Internal Area
39 sq m / 420 sq ft
Living Area
6420 x 3357 mm
Bedroom 1
3122 x 2799 mm
Balcony
2.6 sq m / 28 sq ft

**K.1.02
ONE BEDROOM**

Internal Area
52.5 sq m / 565 sq ft
Living Area
4204 x 7111 mm
Bedroom 1
3100 x 3865 mm
Terrace
9.6 sq m / 103 sq ft

**K.1.06
ONE BEDROOM**

Internal Area
51 sq m / 549 sq ft
Living Area
4055 x 7105 mm
Bedroom 1
3400 x 3104 mm
Terrace
10 sq m / 107 sq ft

**K.1.05
TWO BEDROOM**

Internal Area
87.2 sq m / 939 sq ft
Living Area
4883 x 7090 mm
Bedroom 1
3077 x 4140 mm
Bedroom 2
2800 x 4230 mm
Terrace
8.8 sq m / 94 sq ft



Scale: NTS

ARGO

**CORE
K**

**FLOOR
1**

05
04
03
02
01
GF



LEGEND

- B** Balcony
- C** Cupboard
- F** Fridge
- L** Laundry
- T** Terrace
- W** Wardrobe

DISCLAIMER

This brochure and the information contained in it does not form part of any contract, and while reasonable effort has been made to ensure accuracy, this cannot be guaranteed and no representation or warranty is made in that regard. Apartment designs and layouts are indicative only and may change. Gardens do not include any planters or paviers as indicated on the floor plans. The specification of the apartments is the anticipated specification as at the date this brochure was prepared, but may be subject to change in accordance with permitted variances under the apartment sale contracts. Computer generated images and photos are indicative only. All sales remain subject to contract. All information regarding prospective commercial or retail tenants represents current intention only, and the final identity of the tenants may change. Fixtures and furnishings including wall paneling and wall dressings shown in Computer Generated Images and photos are not standard or included in sales. Please consult your sales contract for information. Kinetics Hope is a marketing name only and will not necessarily form part of the approved postal address. Neither the agents nor any person in their employ has any authority to make or give any representation, warranty or guarantee (whether written or oral) in respect of or in relation to the development (or any parts thereof).

**K.2.03
THREE BEDROOM**

Internal Area
126.3sq m / 1359 sq ft
Living Area
5164 x 8777 mm
Bedroom 1
3100 x 4360 mm
Bedroom 2
2800 x 3730 mm
Bedroom 3
2800 x 3730 mm
Balcony
8.7 sq m / 93 sq ft

**K.2.01
ONE BEDROOM**

Internal Area
50.1 sq m / 539 sq ft
Living Area
4035 x 7005 mm
Bedroom 1
3400 x 3020 mm
Balcony
5 sq m / 53 sq ft

**K.2.07
ONE BEDROOM**

Internal Area
53.3 sq m / 574 sq ft
Living Area
6980 x 4735 mm
Bedroom 1
3100 x 3865 mm
Balcony
5 sq m / 53 sq ft

**K.2.04
SUITE**

Internal Area
39 sq m / 420 sq ft
Living Area
6420 x 3357 mm
Bedroom 1
3122 x 2799 mm
Balcony
2.6 sq m / 28 sq ft

**K.2.02
ONE BEDROOM**

Internal Area
52.5 sq m / 565 sq ft
Living Area
4204 x 7111 mm
Bedroom 1
3100 x 3865 mm
Balcony
5 sq m / 53 sq ft

**K.2.06
ONE BEDROOM**

Internal Area
51 sq m / 549 sq ft
Living Area
4055 x 7105 mm
Bedroom 1
3400 x 3104 mm
Balcony
5 sq m / 53 sq ft

**K.2.05
TWO BEDROOM**

Internal Area
87.2 sq m / 939 sq ft
Living Area
4883 x 7090 mm
Bedroom 1
3077 x 4140 mm
Bedroom 2
2800 x 4230 mm
Balcony
2.9 sq m / 31 sq ft



Scale: NTS

ARGO

**CORE
K**

**FLOOR
2**

05
04
03
02
01
GF



LEGEND

- B** Balcony
- C** Cupboard
- F** Fridge
- L** Laundry
- T** Terrace
- W** Wardrobe

DISCLAIMER

This brochure and the information contained in it does not form part of any contract, and while reasonable effort has been made to ensure accuracy, this cannot be guaranteed and no representation or warranty is made in that regard. Apartment designs and layouts are indicative only and may change. Gardens do not include any planters or paviers as indicated on the floor plans. The specification of the apartments is the anticipated specification as at the date this brochure was prepared, but may be subject to change in accordance with permitted variances under the apartment sale contracts. Computer generated images and photos are indicative only. All sales remain subject to contract. All information regarding prospective commercial or retail tenants represents current intention only, and the final identity of the tenants may change. Fixtures and furnishings including wall painting and wall dressings shown in Computer Generated Images and photos are not standard or included in sales. Please consult your sales contract for information. Kinetics Hope is a marketing name only and will not necessarily form part of the approved postal address. Neither the agents nor any person in their employ has any authority to make or give any representation, warranty or guarantee (whether written or oral) in respect of or in relation to the development (or any parts thereof).

**K.3.03
THREE BEDROOM**

Internal Area
126.3 sq m / 1359 sq ft
Living Area
5164 x 8777 mm
Bedroom 1
3100 x 4360 mm
Bedroom 2
2800 x 3730 mm
Bedroom 3
2800 x 3730 mm
Balcony
8.7 sq m / 93 sq ft

**K.3.01
ONE BEDROOM**

Internal Area
50.1 sq m / 539 sq ft
Living Area
4035 x 7005 mm
Bedroom 1
3400 x 3020 mm
Balcony
5 sq m / 53 sq ft

**K.3.07
ONE BEDROOM**

Internal Area
53.3 sq m / 574 sq ft
Living Area
6980 x 4735 mm
Bedroom 1
3100 x 3865 mm
Balcony
5 sq m / 53 sq ft

**K.3.04
SUITE**

Internal Area
39 sq m / 420 sq ft
Living Area
6420 x 3357 mm
Bedroom 1
3122 x 2799 mm
Balcony
2.6 sq m / 28 sq ft

**K.3.02
ONE BEDROOM**

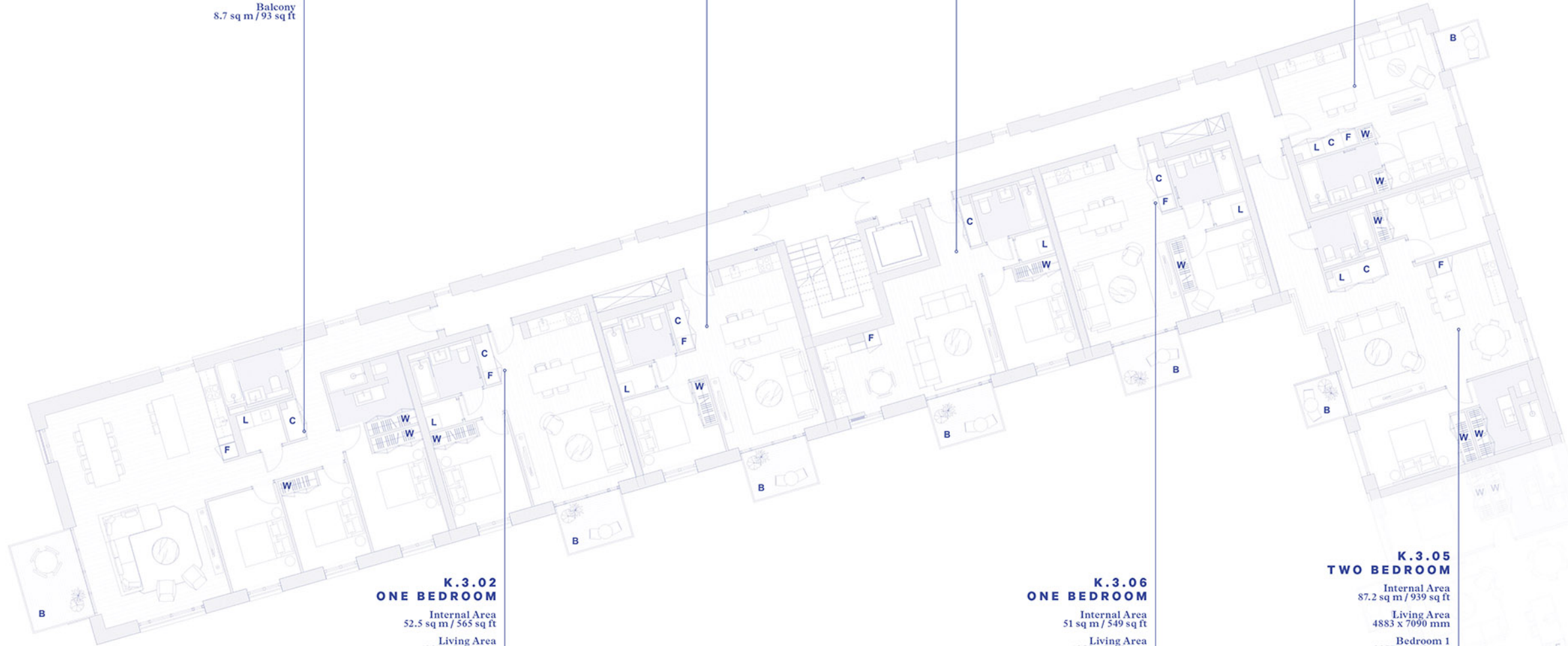
Internal Area
52.5 sq m / 565 sq ft
Living Area
4204 x 7111 mm
Bedroom 1
3100 x 3865 mm
Balcony
5 sq m / 53 sq ft

**K.3.06
ONE BEDROOM**

Internal Area
51 sq m / 549 sq ft
Living Area
4055 x 7105 mm
Bedroom 1
3400 x 3104 mm
Balcony
5 sq m / 53 sq ft

**K.3.05
TWO BEDROOM**

Internal Area
87.2 sq m / 939 sq ft
Living Area
4883 x 7090 mm
Bedroom 1
3077 x 4140 mm
Bedroom 2
2800 x 4230 mm
Balcony
2.9 sq m / 31 sq ft



Scale: NTS

ARGO

**CORE
K**

**FLOOR
3**

05
04
03
02
01
GF



LEGEND

- B** Balcony
- C** Cupboard
- F** Fridge
- L** Laundry
- T** Terrace
- W** Wardrobe

DISCLAIMER

This brochure and the information contained in it does not form part of any contract, and while reasonable effort has been made to ensure accuracy, this cannot be guaranteed and no representation or warranty is made in that regard. Apartment designs and layouts are indicative only and may change. Gardens do not include any planters or paviers as indicated on the floor plans. The specification of the apartments is the anticipated specification as at the date this brochure was prepared, but may be subject to change in accordance with permitted variances under the apartment sale contracts. Computer generated images and photos are indicative only. All sales remain subject to contract. All information regarding prospective commercial or retail tenants represents current intention only, and the final identity of the tenants may change. Fixtures and furnishings including wall painting and wall dressings shown in Computer Generated Images and photos are not standard or included in sales. Please consult your sales contract for information. Kinodick Hooper is a marketing name only and will not necessarily form part of the approved postal address. Neither the agents nor any person in their employ has any authority to make or give any representation, warranty or guarantee (whether written or oral) in respect of or in relation to the development (or any parts thereof).

**K.4.03
THREE BEDROOM**

Internal Area
126.3 sq m / 1359 sq ft
Living Area
5164 x 8777 mm
Bedroom 1
3100 x 4360 mm
Bedroom 2
2800 x 3730 mm
Bedroom 3
2800 x 3730 mm
Balcony
8.7 sq m / 93 sq ft

**K.4.01
ONE BEDROOM**

Internal Area
50.1 sq m / 539 sq ft
Living Area
4035 x 7005 mm
Bedroom 1
3400 x 3020 mm
Balcony
5 sq m / 53 sq ft

**K.4.05
ONE BEDROOM**

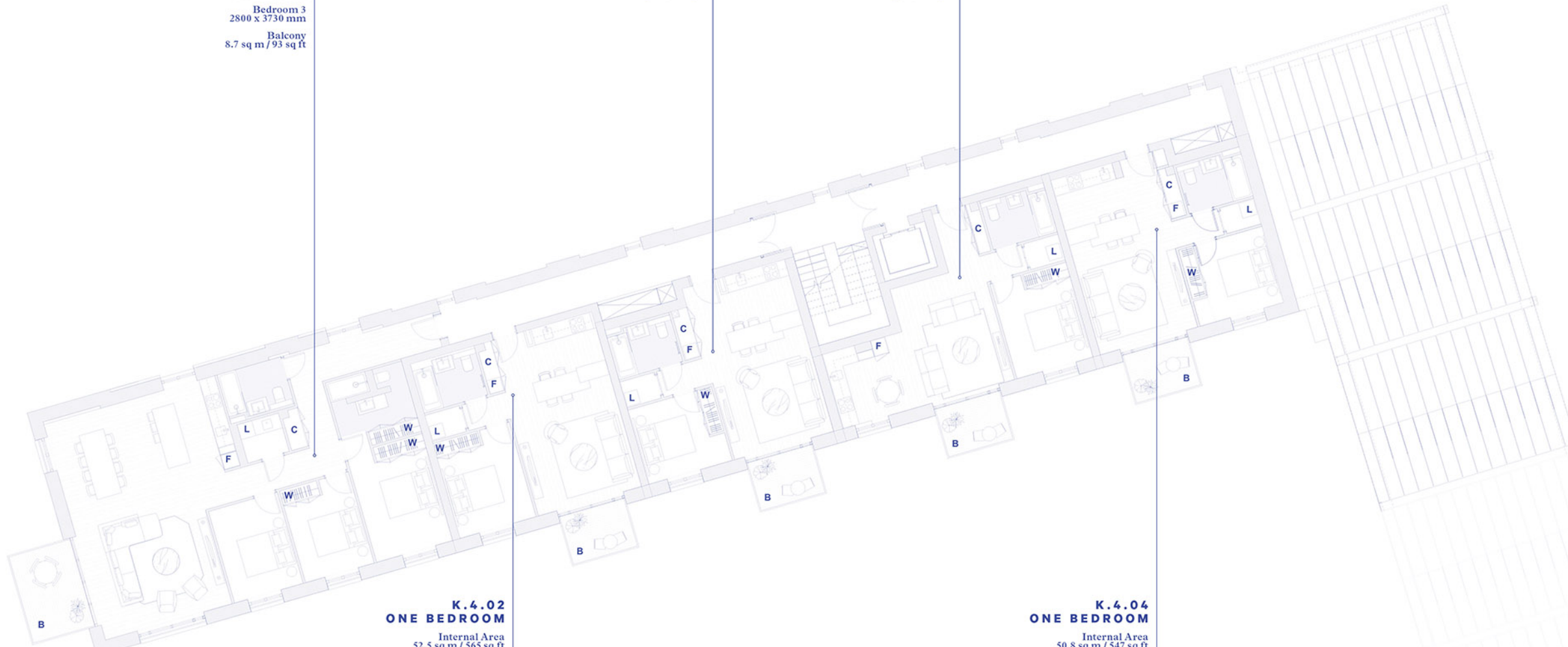
Internal Area
53.3 sq m / 574 sq ft
Living Area
6980 x 4735 mm
Bedroom 1
3100 x 3865 mm
Balcony
5 sq m / 53 sq ft

**K.4.02
ONE BEDROOM**

Internal Area
52.5 sq m / 565 sq ft
Living Area
4204 x 7111 mm
Bedroom 1
3100 x 3865 mm
Balcony
5 sq m / 53 sq ft

**K.4.04
ONE BEDROOM**

Internal Area
50.8 sq m / 547 sq ft
Living Area
3970 x 7105 mm
Bedroom 1
3400 x 3104 mm
Balcony
5 sq m / 53 sq ft



Scale: NTS

ARGO

**CORE
K**

**FLOOR
4**

05
04
03
02
01
GF



LEGEND

- B** Balcony
- C** Cupboard
- F** Fridge
- L** Laundry
- T** Terrace
- W** Wardrobe

DISCLAIMER

This brochure and the information contained in it does not form part of any contract, and while reasonable effort has been made to ensure accuracy, this cannot be guaranteed and no representation or warranty is made in that regard. Apartment designs and layouts are indicative only and may change. Gardens do not include any planters or paviers as indicated on the floor plans. The specification of the apartments is the anticipated specification as at the date this brochure was prepared, but may be subject to change in accordance with permitted variances under the apartment sale contracts. Computer generated images and photos are indicative only. All sales remain subject to contract. All information regarding prospective commercial or retail tenants represents current intention only, and the final identity of the tenants may change. Fixtures and furnishings including wall paneling and wall dressings shown in Computer Generated Images and photos are not standard or included in sales. Please consult your sales contract for information. Gravelink Hope is a marketing name only and will not necessarily form part of the approved postal address. Neither the agents nor any person in their employ has any authority to make or give any representation, warranty or guarantee (whether written or oral) in respect of or in relation to the development (or any parts thereof).

**K.5.03
THREE BEDROOM**

Internal Area
126.3 sq m / 1359 sq ft
Living Area
5164 x 8777 mm
Bedroom 1
3100 x 4360 mm
Bedroom 2
2800 x 3730 mm
Bedroom 3
2800 x 3730 mm
Balcony
8.7 sq m / 93 sq ft

**K.5.01
ONE BEDROOM**

Internal Area
50.1 sq m / 539 sq ft
Living Area
4035 x 7005 mm
Bedroom 1
3400 x 3020 mm
Balcony
5 sq m / 53 sq ft

**K.5.05
ONE BEDROOM**

Internal Area
53.3 sq m / 574 sq ft
Living Area
6980 x 4735 mm
Bedroom 1
3100 x 3865 mm
Balcony
5 sq m / 53 sq ft

**K.5.02
ONE BEDROOM**

Internal Area
52.5 sq m / 565 sq ft
Living Area
4204 x 7111 mm
Bedroom 1
3100 x 3865 mm
Balcony
5 sq m / 53 sq ft

**K.5.04
ONE BEDROOM**

Internal Area
50.8 sq m / 547 sq ft
Living Area
3970 x 7105 mm
Bedroom 1
3400 x 3104 mm
Balcony
5 sq m / 53 sq ft



Scale: NTS

ARGO

**CORE
K**

**FLOOR
5**

05
04
03
02
01
GF

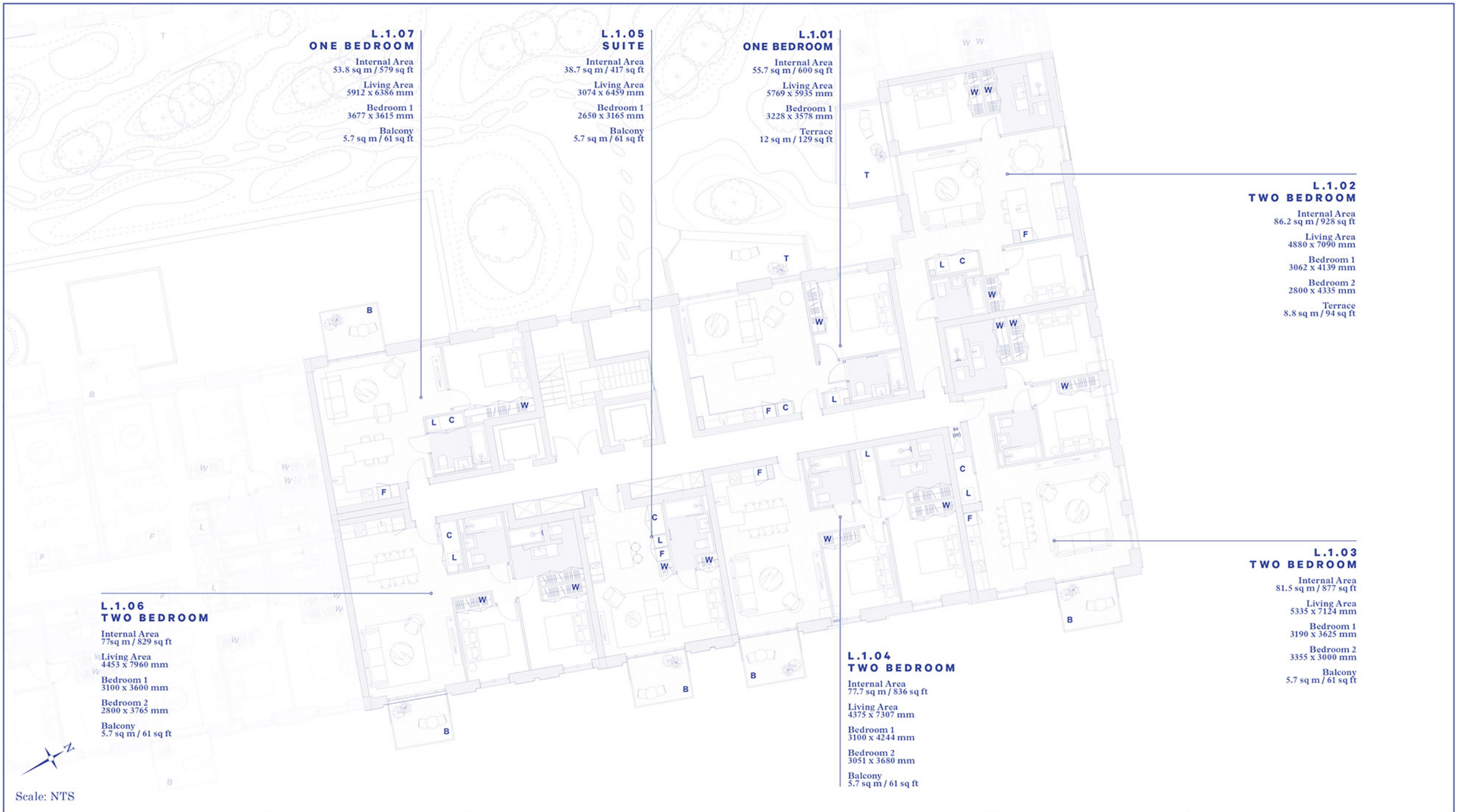


LEGEND

- B** Balcony
- C** Cupboard
- F** Fridge
- L** Laundry
- T** Terrace
- W** Wardrobe

DISCLAIMER

This brochure and the information contained in it does not form part of any contract, and while reasonable effort has been made to ensure accuracy, this cannot be guaranteed and no representation or warranty is made in that regard. Apartment designs and layouts are indicative only and may change. Gardens do not include any planters or paviers as indicated on the floor plans. The specification of the apartments is the anticipated specification as at the date this brochure was prepared, but may be subject to change in accordance with permitted variances under the apartment sale contracts. Computer generated images and photos are indicative only. All sales remain subject to contract. All information regarding prospective commercial or retail tenants represents current intention only, and the final identity of the tenants may change. Fixtures and furnishings including wall paneling and wall dressings shown in Computer Generated Images and photos are not standard or included in sales. Please consult your sales contract for information. Gravelink Hope is a marketing name only and will not necessarily form part of the approved postal address. Neither the agents nor any person in their employ has any authority to make or give any representation, warranty or guarantee (whether written or oral) in respect of or in relation to the development (or any parts thereof).



**L.1.07
ONE BEDROOM**
Internal Area
53.8 sq m / 579 sq ft
Living Area
5912 x 6386 mm
Bedroom 1
3677 x 3615 mm
Balcony
5.7 sq m / 61 sq ft

**L.1.05
SUITE**
Internal Area
38.7 sq m / 417 sq ft
Living Area
3074 x 6459 mm
Bedroom 1
2650 x 3165 mm
Balcony
5.7 sq m / 61 sq ft

**L.1.01
ONE BEDROOM**
Internal Area
55.7 sq m / 600 sq ft
Living Area
5769 x 5935 mm
Bedroom 1
3228 x 3578 mm
Terrace
12 sq m / 129 sq ft

**L.1.02
TWO BEDROOM**
Internal Area
86.2 sq m / 928 sq ft
Living Area
4880 x 7090 mm
Bedroom 1
3062 x 4139 mm
Bedroom 2
2800 x 4355 mm
Terrace
8.8 sq m / 94 sq ft

**L.1.03
TWO BEDROOM**
Internal Area
81.5 sq m / 877 sq ft
Living Area
5335 x 7124 mm
Bedroom 1
3190 x 3625 mm
Bedroom 2
3355 x 3000 mm
Balcony
5.7 sq m / 61 sq ft

**L.1.06
TWO BEDROOM**
Internal Area
77sq m / 829 sq ft
Living Area
4453 x 7960 mm
Bedroom 1
3100 x 3600 mm
Bedroom 2
2800 x 3765 mm
Balcony
5.7 sq m / 61 sq ft

**L.1.04
TWO BEDROOM**
Internal Area
77.7 sq m / 836 sq ft
Living Area
4375 x 7307 mm
Bedroom 1
3100 x 4244 mm
Bedroom 2
3051 x 3680 mm
Balcony
5.7 sq m / 61 sq ft



Scale: NTS

ARGO

**CORE
L**

**FLOOR
1**

11
10
09
08
07
06
04
03
02
01
GF



LEGEND
B Balcony
C Cupboard
F Fridge
L Laundry
T Terrace
W Wardrobe

DISCLAIMER

This brochure and the information contained in it does not form part of any contract, and while reasonable effort has been made to ensure accuracy, this cannot be guaranteed and no representation or warranty is made in that regard. Apartment designs and layouts are indicative only and may change. Gardens do not include any planters or pavions as indicated on the floor plans. The specification of the apartments is the anticipated specification as at the date this brochure was prepared, but may be subject to change in accordance with permitted variances under the apartment sale contracts. Computer generated images and photos are indicative only. All sales remain subject to contract. All information regarding prospective commercial or retail tenants represents current intention only, and the final identity of the tenants may change. Fixtures and furnishings including wall painting and wall drawings shown in Computer Generated Images and photos are not standard or included in sales. Please consult your sales contract for information. Gravelock Hope is a marketing name only and will not necessarily form part of the approved postal address. Neither the agents nor any person in their employ has any authority to make or give any representation, warranty or guarantee (whether written or oral) in respect of or in relation to the development (or any parts thereof).

**L.2.07
ONE BEDROOM**

Internal Area
53.8 sq m / 579 sq ft
Living Area
5912 x 6386 mm
Bedroom 1
3677 x 3615 mm
Balcony
5.7 sq m / 61 sq ft

**L.2.05
SUITE**

Internal Area
38.7 sq m / 417 sq ft
Living Area
3074 x 6459 mm
Bedroom 1
2650 x 3165 mm
Balcony
5.7 sq m / 61 sq ft

**L.2.01
TWO BEDROOM**

Internal Area
74 sq m / 797 sq ft
Living Area
6500 x 5786 mm
Bedroom 1
3700 x 3278 mm
Bedroom 2
3359 x 3615 mm
Balcony
5.7 sq m / 61 sq ft

**L.2.02
TWO BEDROOM**

Internal Area
86.2 sq m / 928 sq ft
Living Area
4880 x 7090 mm
Bedroom 1
3062 x 4139 mm
Bedroom 2
2800 x 4355 mm
Balcony
2.9 sq m / 31 sq ft

**L.2.03
TWO BEDROOM**

Internal Area
81.5 sq m / 877 sq ft
Living Area
5335 x 7124 mm
Bedroom 1
3190 x 3625 mm
Bedroom 2
3355 x 3000 mm
Balcony
5.7 sq m / 61 sq ft

**L.2.06
TWO BEDROOM**

Internal Area
77sq m / 829 sq ft
Living Area
4453 x 7960 mm
Bedroom 1
3100 x 3600 mm
Bedroom 2
2800 x 3765 mm
Balcony
5.7 sq m / 61 sq ft

**L.2.04
TWO BEDROOM**

Internal Area
77.7 sq m / 836 sq ft
Living Area
4375 x 7307 mm
Bedroom 1
3100 x 4244 mm
Bedroom 2
3051 x 3680 mm
Balcony
5.7 sq m / 61 sq ft



Scale: NTS

ARGO

**CORE
L**

**FLOOR
2**

11
10
09
08
07
06
04
03
02
01
GF



LEGEND

- B** Balcony
- C** Cupboard
- F** Fridge
- L** Laundry
- T** Terrace
- W** Wardrobe

DISCLAIMER

This brochure and the information contained in it does not form part of any contract, and while reasonable effort has been made to ensure accuracy, this cannot be guaranteed and no representation or warranty is made in that regard. Apartment designs and layouts are indicative only and may change. Gardens do not include any planters or paviers as indicated on the floor plans. The specification of the apartments is the anticipated specification as at the date this brochure was prepared, but may be subject to change in accordance with permitted variances under the apartment sale contracts. Computer generated images and photos are indicative only. All sales remain subject to contract. All information regarding prospective commercial or retail tenants represents current intention only, and the final identity of the tenants may change. Fixtures and furnishings including wall painting and wall drawings shown in Computer Generated Images and photos are not standard or included in sales. Please consult your sales contract for information. Gravelock Hope is a marketing name only and will not necessarily form part of the approved postal address. Neither the agents nor any person in their employ has any authority to make or give any representation, warranty or guarantee (whether written or oral) in respect of or in relation to the development (or any parts thereof).

**L.3.07
ONE BEDROOM**

Internal Area
53.8 sq m / 579 sq ft
Living Area
5912 x 6386 mm
Bedroom 1
3677 x 3615 mm
Balcony
5.7 sq m / 61 sq ft

**L.3.05
SUITE**

Internal Area
38.7 sq m / 417 sq ft
Living Area
3074 x 6459 mm
Bedroom 1
2650 x 3165 mm
Balcony
5.7 sq m / 61 sq ft

**L.3.01
TWO BEDROOM**

Internal Area
74 sq m / 797 sq ft
Living Area
6500 x 5786 mm
Bedroom 1
3700 x 3278 mm
Bedroom 2
3359 x 3615 mm
Balcony
5.7 sq m / 61 sq ft

**L.3.02
TWO BEDROOM**

Internal Area
86.2 sq m / 928 sq ft
Living Area
4880 x 7090 mm
Bedroom 1
3062 x 4139 mm
Bedroom 2
2800 x 4355 mm
Balcony
2.9 sq m / 31 sq ft

**L.3.03
TWO BEDROOM**

Internal Area
81.5 sq m / 877 sq ft
Living Area
5335 x 7124 mm
Bedroom 1
3190 x 3625 mm
Bedroom 2
3355 x 3000 mm
Balcony
5.7 sq m / 61 sq ft

**L.3.06
TWO BEDROOM**

Internal Area
77sq m / 829 sq ft
Living Area
4453 x 7960 mm
Bedroom 1
3100 x 3600 mm
Bedroom 2
2800 x 3765 mm
Balcony
5.7 sq m / 61 sq ft

**L.3.04
TWO BEDROOM**

Internal Area
77.7 sq m / 836 sq ft
Living Area
4375 x 7307 mm
Bedroom 1
3100 x 4244 mm
Bedroom 2
3051 x 3680 mm
Balcony
5.7 sq m / 61 sq ft



Scale: NTS

ARGO

**CORE
L**

**FLOOR
3**

11
10
09
08
07
06
05
04
03
02
01
GF



LEGEND

- B** Balcony
- C** Cupboard
- F** Fridge
- L** Laundry
- T** Terrace
- W** Wardrobe

DISCLAIMER

This brochure and the information contained in it does not form part of any contract, and while reasonable effort has been made to ensure accuracy, this cannot be guaranteed and no representation or warranty is made in that regard. Apartment designs and layouts are indicative only and may change. Gardens do not include any planters or paviers as indicated on the floor plans. The specification of the apartments is the anticipated specification as at the date this brochure was prepared, but may be subject to change in accordance with permitted variances under the apartment sale contracts. Computer generated images and photos are indicative only. All sales remain subject to contract. All information regarding prospective commercial or retail tenants represents current intention only, and the final identity of the tenants may change. Fixtures and furnishings including wall painting and wall drawings shown in Computer Generated Images and photos are not standard or included in sales. Please consult your sales contract for information. Grandlink Hope is a marketing name only and will not necessarily form part of the approved postal address. Neither the agents nor any person in their employ has any authority to make or give any representation, warranty or guarantee (whether written or oral) in respect of or in relation to the development (or any parts thereof).

**L.4.05
ONE BEDROOM**

Internal Area
53.8 sq m / 579 sq ft
Living Area
5912 x 6386 mm
Bedroom 1
3677 x 3615 mm
Balcony
5.7 sq m / 61 sq ft

**L.4.03
SUITE**

Internal Area
38.7 sq m / 417 sq ft
Living Area
3074 x 6459 mm
Bedroom 1
2650 x 3165 mm
Balcony
5.7 sq m / 61 sq ft

**L.4.01
ONE BEDROOM**

Internal Area
55.6 sq m / 598 sq ft
Living Area
7309 x 5785 mm
Bedroom 1
3100 x 3615 mm
Balcony
5.7 sq m / 61 sq ft

**L.4.04
TWO BEDROOM**

Internal Area
77sq m / 829 sq ft
Living Area
4453 x 7960 mm
Bedroom 1
3100 x 3600 mm
Bedroom 2
2800 x 3765 mm
Balcony
5.7 sq m / 61 sq ft

**L.4.02
ONE BEDROOM**

Internal Area
52.1 sq m / 561 sq ft
Living Area
5410 x 4270 mm
Bedroom 1
3600 x 3128 mm
Balcony
5.7 sq m / 61 sq ft



Scale: NTS

ARGO

**CORE
L**

**FLOOR
4**

11
10
09
08
07
06
05
04
03
02
01
GF



LEGEND

- B** Balcony
- C** Cupboard
- F** Fridge
- L** Laundry
- T** Terrace
- W** Wardrobe

DISCLAIMER

This brochure and the information contained in it does not form part of any contract, and while reasonable effort has been made to ensure accuracy, this cannot be guaranteed and no representation or warranty is made in that regard. Apartment designs and layouts are indicative only and may change. Gardens do not include any planters or paviers as indicated on the floor plans. The specification of the apartments is the anticipated specification as at the date this brochure was prepared, but may be subject to change in accordance with permitted variances under the apartment sale contracts. Computer generated images and photos are indicative only. All sales remain subject to contract. All information regarding prospective commercial or retail tenants represents current intention only, and the final identity of the tenants may change. Fixtures and furnishings including wall painting and wall dressings shown in Computer Generated Images and photos are not standard or included in sales. Please consult your sales contract for information. Gravelink Hope is a marketing name only and will not necessarily form part of the approved postal address. Neither the agents nor any person in their employ has any authority to make or give any representation, warranty or guarantee (whether written or oral) in respect of or in relation to the development (or any parts thereof).

**L.5.05
ONE BEDROOM**

Internal Area
53.2 sq m / 573 sq ft
Living Area
5882 x 6386 mm
Bedroom 1
3677 x 3615 mm
Balcony
5.7 sq m / 61 sq ft

**L.5.03
SUITE**

Internal Area
38.7 sq m / 417 sq ft
Living Area
3074 x 6459 mm
Bedroom 1
2650 x 3165 mm
Balcony
5.7 sq m / 61 sq ft

**L.5.01
ONE BEDROOM**

Internal Area
55.6 sq m / 598 sq ft
Living Area
7309 x 5785 mm
Bedroom 1
3100 x 3615 mm
Balcony
5.7 sq m / 61 sq ft

**L.5.04
TWO BEDROOM**

Internal Area
76.9 sq m / 828 sq ft
Living Area
4453 x 7905 mm
Bedroom 1
3100 x 3600 mm
Bedroom 2
2800 x 3765 mm
Balcony
5.7 sq m / 61 sq ft

**L.5.02
ONE BEDROOM**

Internal Area
52.1 sq m / 561 sq ft
Living Area
5410 x 4270 mm
Bedroom 1
3600 x 3128 mm
Balcony
5.7 sq m / 61 sq ft



Scale: NTS

ARGO

**CORE
L**

**FLOOR
5**

11
10
09
08
07
06
05
04
03
02
01
GF



LEGEND

- B** Balcony
- C** Cupboard
- F** Fridge
- L** Laundry
- T** Terrace
- W** Wardrobe

DISCLAIMER

This brochure and the information contained in it does not form part of any contract, and while reasonable effort has been made to ensure accuracy, this cannot be guaranteed and no representation or warranty is made in that regard. Apartment designs and layouts are indicative only and may change. Gardens do not include any planters or paviers as indicated on the floor plans. The specification of the apartments is the anticipated specification as at the date this brochure was prepared, but may be subject to change in accordance with permitted variances under the apartment sale contracts. Computer generated images and photos are indicative only. All sales remain subject to contract. All information regarding prospective commercial or retail tenants represents current intention only, and the final identity of the tenants may change. Fixtures and furnishings including wall paneling and wall dressings shown in Computer Generated Images and photos are not standard or included in sales. Please consult your sales contract for information. Gravelock Hope is a marketing name only and will not necessarily form part of the approved postal address. Neither the agents nor any person in their employ has any authority to make or give any representation, warranty or guarantee (whether written or oral) in respect of or in relation to the development (or any parts thereof).

**L.6.05
ONE BEDROOM**

Internal Area
53.2 sq m / 573 sq ft
Living Area
5882 x 6386 mm
Bedroom 1
3677 x 3165 mm
Balcony
5.7 sq m / 61 sq ft

**L.6.03
SUITE**

Internal Area
38.7 sq m / 417 sq ft
Living Area
3074 x 6459 mm
Bedroom 1
2650 x 3165 mm
Balcony
5.7 sq m / 61 sq ft

**L.6.01
ONE BEDROOM**

Internal Area
55.6 sq m / 598 sq ft
Living Area
7309 x 5785 mm
Bedroom 1
3100 x 3615 mm
Balcony
5.7 sq m / 61 sq ft

**L.6.04
TWO BEDROOM**

Internal Area
76.9 sq m / 828 sq ft
Living Area
4453 x 7905 mm
Bedroom 1
3100 x 3600 mm
Bedroom 2
2800 x 3765 mm
Balcony
5.7 sq m / 61 sq ft

**L.6.02
ONE BEDROOM**

Internal Area
52.1 sq m / 561 sq ft
Living Area
5410 x 4270 mm
Bedroom 1
3600 x 3128 mm
Balcony
5.7 sq m / 61 sq ft



Scale: NTS

ARGO

**CORE
L**

**FLOOR
6**

11
10
09
08
07
06
05
04
03
02
01
GF



LEGEND

- B** Balcony
- C** Cupboard
- F** Fridge
- L** Laundry
- T** Terrace
- W** Wardrobe

DISCLAIMER

This brochure and the information contained in it does not form part of any contract, and while reasonable effort has been made to ensure accuracy, this cannot be guaranteed and no representation or warranty is made in that regard. Apartment designs and layouts are indicative only and may change. Gardens do not include any planters or paviers as indicated on the floor plans. The specification of the apartments is the anticipated specification as at the date this brochure was prepared, but may be subject to change in accordance with permitted variances under the apartment sale contracts. Computer generated images and photos are indicative only. All sales remain subject to contract. All information regarding prospective commercial or retail tenants represents current intention only, and the final identity of the tenants may change. Fixtures and furnishings including wall paneling and wall dressings shown in Computer Generated Images and photos are not standard or included in sales. Please consult your sales contract for information. Gravelock Hope is a marketing name only and will not necessarily form part of the approved postal address. Neither the agents nor any person in their employ has any authority to make or give any representation, warranty or guarantee (whether written or oral) in respect of or in relation to the development (or any parts thereof).

**L.7.05
ONE BEDROOM**

Internal Area
53.2 sq m / 573 sq ft
Living Area
5882 x 6386 mm
Bedroom 1
3677 x 3165 mm
Balcony
5.7 sq m / 61 sq ft

**L.7.03
SUITE**

Internal Area
38.7 sq m / 417 sq ft
Living Area
3074 x 6459 mm
Bedroom 1
2650 x 3165 mm
Balcony
5.7 sq m / 61 sq ft

**L.7.01
ONE BEDROOM**

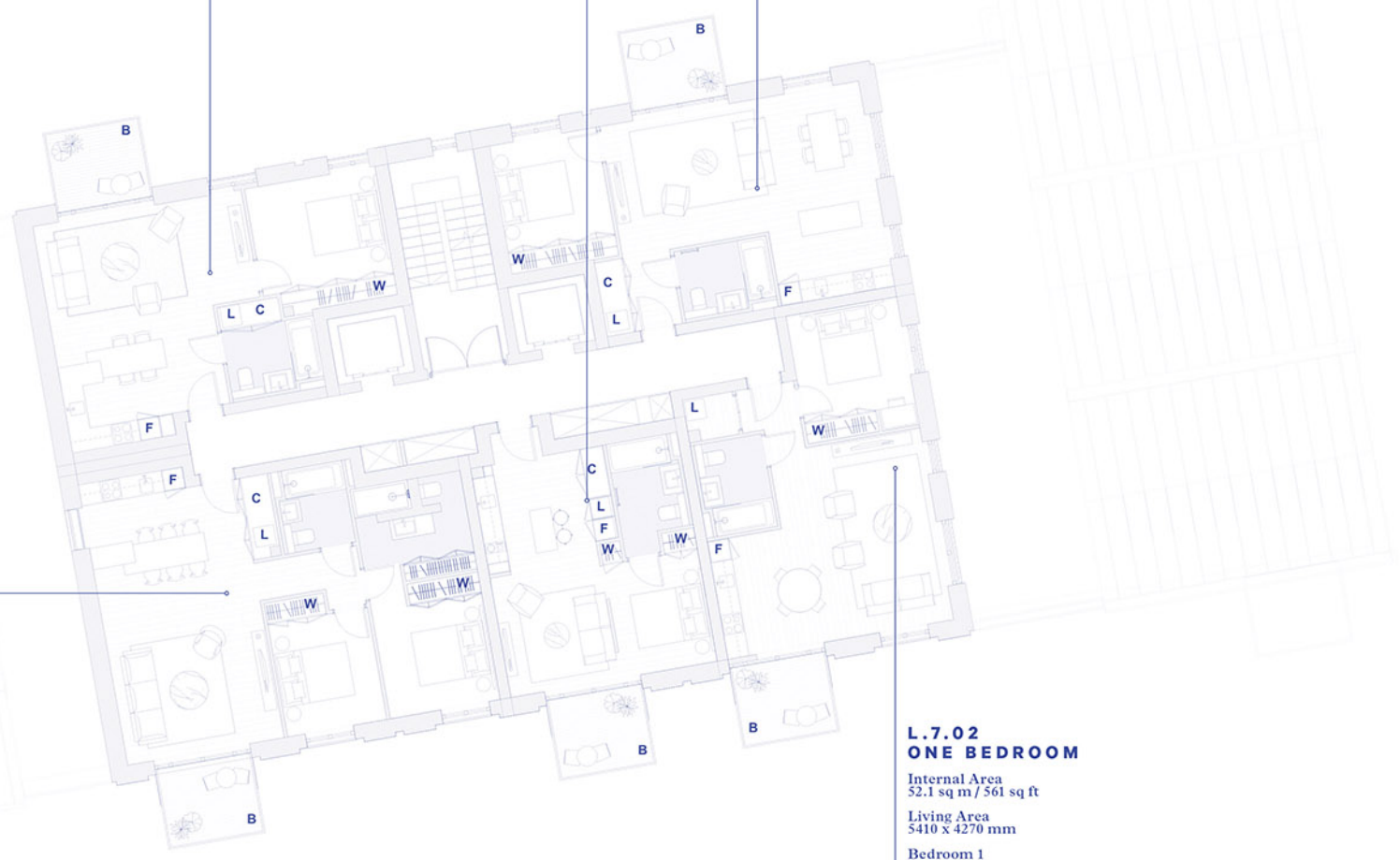
Internal Area
55.6 sq m / 598 sq ft
Living Area
7309 x 5785 mm
Bedroom 1
3100 x 3165 mm
Balcony
5.7 sq m / 61 sq ft

**L.7.04
TWO BEDROOM**

Internal Area
76.9 sq m / 828 sq ft
Living Area
4453 x 7905 mm
Bedroom 1
3100 x 3600 mm
Bedroom 2
2800 x 3765 mm
Balcony
5.7 sq m / 61 sq ft

**L.7.02
ONE BEDROOM**

Internal Area
52.1 sq m / 561 sq ft
Living Area
5410 x 4270 mm
Bedroom 1
3600 x 3128 mm
Balcony
5.7 sq m / 61 sq ft



Scale: NTS

ARGO

**CORE
L**

**FLOOR
7**

11
10
09
08
07
06
04
03
02
01
GF



LEGEND

- B** Balcony
- C** Cupboard
- F** Fridge
- L** Laundry
- T** Terrace
- W** Wardrobe

DISCLAIMER

This brochure and the information contained in it does not form part of any contract, and while reasonable effort has been made to ensure accuracy, this cannot be guaranteed and no representation or warranty is made in that regard. Apartment designs and layouts are indicative only and may change. Gardens do not include any planters or paviers as indicated on the floor plans. The specification of the apartments is the anticipated specification as at the date this brochure was prepared, but may be subject to change in accordance with permitted variances under the apartment sale contracts. Computer generated images and photos are indicative only. All sales remain subject to contract. All information regarding prospective commercial or retail tenants represents current intention only, and the final identity of the tenants may change. Fixtures and furnishings including wall paneling and wall dressings shown in Computer Generated Images and photos are not standard or included in sales. Please consult your sales contract for information. Gravelink Hope is a marketing name only and will not necessarily form part of the approved postal address. Neither the agents nor any person in their employ has any authority to make or give any representation, warranty or guarantee (whether written or oral) in respect of or in relation to the development (or any parts thereof).

**L.8.05
ONE BEDROOM**

Internal Area
53.2 sq m / 573 sq ft
Living Area
5878 x 6386 mm
Bedroom 1
3677 x 3615 mm
Balcony
5.7 sq m / 61 sq ft

**L.8.03
SUITE**

Internal Area
38.7 sq m / 417 sq ft
Living Area
3074 x 6459 mm
Bedroom 1
2650 x 3165 mm
Balcony
5.7 sq m / 61 sq ft

**L.8.01
ONE BEDROOM**

Internal Area
55.6 sq m / 598 sq ft
Living Area
7309 x 5785 mm
Bedroom 1
3100 x 3615 mm
Balcony
5.7 sq m / 61 sq ft

**L.8.04
TWO BEDROOM**

Internal Area
76.9 sq m / 828 sq ft
Living Area
4453 x 7905 mm
Bedroom 1
3100 x 3600 mm
Bedroom 2
2800 x 3765 mm
Balcony
5.7 sq m / 61 sq ft

**L.8.02
ONE BEDROOM**

Internal Area
52.1 sq m / 561 sq ft
Living Area
5410 x 4270 mm
Bedroom 1
3600 x 3128 mm
Balcony
5.7 sq m / 61 sq ft



Scale: NTS

ARGO

**CORE
L**

**FLOOR
8**

11
10
09
08
07
06
04
03
02
01
GF



LEGEND

- B** Balcony
- C** Cupboard
- F** Fridge
- L** Laundry
- T** Terrace
- W** Wardrobe

DISCLAIMER

This brochure and the information contained in it does not form part of any contract, and while reasonable effort has been made to ensure accuracy, this cannot be guaranteed and no representation or warranty is made in that regard. Apartment designs and layouts are indicative only and may change. Gardens do not include any planters or paviers as indicated on the floor plans. The specification of the apartments is the anticipated specification as at the date this brochure was prepared, but may be subject to change in accordance with permitted variances under the apartment sale contracts. Computer generated images and photos are indicative only. All sales remain subject to contract. All information regarding prospective commercial or retail tenants represents current intention only, and the final identity of the tenants may change. Fixtures and furnishings including wall painting and wall dressings shown in Computer Generated Images and photos are not standard or included in sales. Please consult your sales contract for information. Gravelock Hope is a marketing name only and will not necessarily form part of the approved postal address. Neither the agents nor any person in their employ has any authority to make or give any representation, warranty or guarantee (whether written or oral) in respect of or in relation to the development (or any parts thereof).

**L.9.05
ONE BEDROOM**

Internal Area
53.2 sq m / 573 sq ft
Living Area
5878 x 6386 mm
Bedroom 1
3677 x 3615 mm
Balcony
5.7 sq m / 61 sq ft

**L.9.03
SUITE**

Internal Area
38.7 sq m / 417 sq ft
Living Area
3074 x 6459 mm
Bedroom 1
2650 x 3165 mm
Balcony
5.7 sq m / 61 sq ft

**L.9.01
ONE BEDROOM**

Internal Area
55.6 sq m / 598 sq ft
Living Area
7309 x 5785 mm
Bedroom 1
3100 x 3615 mm
Balcony
5.7 sq m / 61 sq ft

**L.9.04
TWO BEDROOM**

Internal Area
76.9 sq m / 828 sq ft
Living Area
4453 x 7905 mm
Bedroom 1
3100 x 3600 mm
Bedroom 2
2800 x 3765 mm
Balcony
5.7 sq m / 61 sq ft

**L.9.02
ONE BEDROOM**

Internal Area
52.1 sq m / 561 sq ft
Living Area
5410 x 4270 mm
Bedroom 1
3600 x 3128 mm
Balcony
5.7 sq m / 61 sq ft



Scale: NTS

ARGO

**CORE
L**

**FLOOR
9**

11
10
09
08
07
06
04
03
02
01
GF



LEGEND

- B** Balcony
- C** Cupboard
- F** Fridge
- L** Laundry
- T** Terrace
- W** Wardrobe

DISCLAIMER

This brochure and the information contained in it does not form part of any contract, and while reasonable effort has been made to ensure accuracy, this cannot be guaranteed and no representation or warranty is made in that regard. Apartment designs and layouts are indicative only and may change. Gardens do not include any planters or paviers as indicated on the floor plans. The specification of the apartments is the anticipated specification as at the date this brochure was prepared, but may be subject to change in accordance with permitted variances under the apartment sale contracts. Computer generated images and photos are indicative only. All sales remain subject to contract. All information regarding prospective commercial or retail tenants represents current intention only, and the final identity of the tenants may change. Fixtures and furnishings including wall painting and wall dressings shown in Computer Generated Images and photos are not standard or included in sales. Please consult your sales contract for information. Grounds & Hope is a marketing name only and will not necessarily form part of the approved postal address. Neither the agents nor any person in their employ has any authority to make or give any representation, warranty or guarantee (whether written or oral) in respect of or in relation to the development (or any parts thereof).

**L.10.05
ONE BEDROOM**

Internal Area
53.2 sq m / 573 sq ft
Living Area
5878 x 6386 mm
Bedroom 1
3677 x 3615 mm
Balcony
5.7 sq m / 61 sq ft

**L.10.03
SUITE**

Internal Area
38.7 sq m / 417 sq ft
Living Area
3074 x 6459 mm
Bedroom 1
2650 x 3165 mm
Balcony
5.7 sq m / 61 sq ft

**L.10.01
ONE BEDROOM**

Internal Area
55.6 sq m / 598 sq ft
Living Area
7309 x 5785 mm
Bedroom 1
3100 x 3615 mm
Balcony
5.7 sq m / 61 sq ft

**L.10.04
TWO BEDROOM**

Internal Area
76.9 sq m / 828 sq ft
Living Area
4453 x 7905 mm
Bedroom 1
3100 x 3600 mm
Bedroom 2
2800 x 3765 mm
Balcony
5.7 sq m / 61 sq ft

**L.10.02
ONE BEDROOM**

Internal Area
52.1 sq m / 561 sq ft
Living Area
5410 x 4270 mm
Bedroom 1
3600 x 3128 mm
Balcony
5.7 sq m / 61 sq ft



Scale: NTS

ARGO

**CORE
L**

**FLOOR
10**

11
10
09
08
07
06
04
03
02
01
GF



LEGEND

- B** Balcony
- C** Cupboard
- F** Fridge
- L** Laundry
- T** Terrace
- W** Wardrobe

DISCLAIMER

This brochure and the information contained in it does not form part of any contract, and while reasonable effort has been made to ensure accuracy, this cannot be guaranteed and no representation or warranty is made in that regard. Apartment designs and layouts are indicative only and may change. Gardens do not include any planters or paviers as indicated on the floor plans. The specification of the apartments is the anticipated specification as at the date this brochure was prepared, but may be subject to change in accordance with permitted variances under the apartment sale contracts. Computer generated images and photos are indicative only. All sales remain subject to contract. All information regarding prospective commercial or retail tenants represents current intention only, and the final identity of the tenants may change. Fixtures and furnishings including wall painting and wall dressings shown in Computer Generated Images and photos are not standard or included in sales. Please consult your sales contract for information. Gravelock Hope is a marketing name only and will not necessarily form part of the approved postal address. Neither the agents nor any person in their employ has any authority to make or give any representation, warranty or assurance (whether written or oral) in respect of or in relation to the development (or any parts thereof).

APARTMENT SPECIFICATIONS

MAIN STRUCTURE

Reinforced concrete frame on reinforced concrete piled foundations.

BUILDING ENVELOPE

External wall with quality brick finish.

FLOORS

Reinforced concrete slab with appropriate floor finishes (see flooring).

ROOF

High-performance membrane roofing overlaid with pre-cast paving and bio-roofs where applicable.

WINDOWS

Double-glazed aluminium windows with durable powder-coat paint finish.

STAIRS

In-situ or pre-cast concrete stairs with steel balustrades in common areas.

WALLS

Party walls constructed from metal studwork finished on both sides with sound resistant plasterboard and acoustic insulation between, or structural concrete faced with plasterboard on both sides. Internal walls constructed from metal studwork with plasterboard on each side and acoustic insulation where detailed.

BALCONIES

Where applicable, a mixture of painted metal and glass balustrade balconies constructed with steel handrails and decking boards.

CEILINGS

Suspended painted plasterboard ceiling. Feature exposed concrete ceiling area with coffer detail in living room.

FLOORING

Engineered oak floor boarding to hall, living areas and kitchen. Ceramic tile flooring to bathrooms, en-suites and shower rooms. Fitted carpet to bedrooms.

DECORATION

All internal walls painted with washable emulsion. Skirtings, doors and frames painted with an eggshell paint finish.

KITCHEN

Suite, 1, 2 and 3 bedroom apartments fitted with custom designed modular base and wall cabinets with lacquer paint finish and contrasting interior colour. Brass pull handles. Feature brass mesh to wall units. Concealed LED lighting to underside of overhead cupboards. Worktops fitted with under-mounted stainless steel sink and industrial look single lever deck mounted tap in natural brass. Worktops in concrete effect technical stone. Integrated appliances, Siemens multi-function electric oven and hob. European Manufactured integrated extractor hood, integrated fridge freezer and dishwasher. Combined washing machine/tumble dryer located in separate cupboard. Concrete effect technical stone clad island with feature integrated dining table are fitted to selected 1 and 2 bedroom apartments and all of the 3 bedroom apartments.

EN-SUITE

Master en-suite to selected 2 and 3 bedroom apartments. Industrial look natural brass thermostatic mixer tap shower fitting to shower. White shower tray. White porcelain WC with concealed cistern. Timber vanity top with mounted ceramic hand basin, and single lever industrial tap in a natural brass finish. Wall mounted oak shelving with mirror and recessed LED lighting. Bathroom walls finished in white ceramic tiles and feature wall tile. Wall mounted heated towel rail.

TYPICAL BATHROOM

Premium acrylic bath with industrial look natural brass bath filler, with overhead shower. White porcelain WC with concealed cistern. Timber vanity top with mounted ceramic wash basin with single lever industrial tap in a natural brass finish. Wall mounted oak shelving with mirror and recessed LED lighting. Bathroom walls finished in white ceramic tiles and feature wall tile. Wall mounted heated towel rail.

APARTMENT SPECIFICATIONS

SHOWER ROOMS

Industrial look natural brass thermostatic mixer tap and overhead shower. White shower tray. White porcelain WC with concealed cistern. Timber vanity top with mounted ceramic wash basin with single lever industrial tap in a natural brass finish. Wall mounted oak shelving with mirror and recessed LED lighting. Bathroom walls finished in white ceramic tiles and feature wall tile. Wall mounted heated towel rail.

HEATING, COOLING AND HOT WATER

Thermostatically controlled comfort cooling to all bedrooms and living spaces with character radiators throughout the apartment. Individually metered system provides heating and hot water from the development's central plant.

ELECTRICS

Energy efficient down lighters fitted in all rooms, where appropriate. Switch plates and sockets in accordance with IEE regulations. TV/FM and telephone points for high speed broadband internet access in living room and master bedroom. Communal satellite dish with connection points in living room and main bedroom. (Residents are responsible for their own connections and related charges for cost of services.) Smoke/heat detectors fitted as standard.

MANAGEMENT AND SECURITY

Management and 24 hour security services located in the central estate management office. Entry phone system connected to main entrance door. CCTV system provided to cover the whole estate.

PARKING

Limited car parking at extra cost and subject to availability.

ELEVATORS

Elevators serve all floors.

NOTE

Natural materials will mature and develop a patina over time.

DISCLAIMER

This brochure and the information contained in it does not form part of any contract, and while reasonable effort has been made to ensure accuracy, this cannot be guaranteed and no representation or warranty is made in that regard. Apartment designs and layouts are indicative only and may change. Gardens do not include any planters or paviers as indicated on the floor plans. The specification of the apartments is the anticipated specification as at the date this brochure was prepared, but may be subject to change in accordance with permitted variances under the apartment sale contracts. Computer generated images and photos are indicative only. All sales remain subject to contract. All information regarding prospective commercial or retail tenants represents current intention only, and the final identity of the tenants may change. Fixtures and furnishings including wall panelling and wall dressings shown in Computer Generated Images and photos are not standard or included in sales. Please consult your sales contract for information. Goodluck Hope is a marketing name only and will not necessarily form part of the approved postal address. Neither the agents nor any person in their employ has any authority to make or give any representation, warranty or guarantee (whether written or oral) in respect of or in relation to the development (or any parts thereof).

Jones Lang LaSalle Investments Limited
7/F One Taikoo Place, 979 King's Road, Hong Kong
Tel: +852 3759 0909
Email: irp.hk@ap.jll.com

Planning permission No.: PA/17/02292 granted by London Borough of Tower Hamlets. Acquiring interest in an apartment in the building with 999 year leasehold. The market information herein has been obtained from sources we believed to be reliable, but which have not been independently verified and we make no guarantee, representation or warranty as to its accuracy or completeness or correctness. No liability is accepted whatsoever for any direct, indirect or consequential loss arising from the use of this publication. This is not and should not be construed as an offer to buy or sell any landed property and, accordingly, do not have any legal binding effect whatsoever on JLL and/ or their clients. This is not intended to provide any professional, investment or any other type of advice or recommendation. You should seek professional, independent and specific advice on any such investment decision. Purchasing uncompleted properties situated outside Hong Kong is complicated and contains risk. You should review all relevant information and documents carefully before making a purchase decision. If in doubt, please seek independent professional advice before making a purchase decision. The non-licensed staff engage in estate agency work exclusively in relation to properties outside Hong Kong and they are not licensed to deal with any property situated in Hong Kong. JLL Property Reference Number: IRP_N_101_00197. Date of publication: 8 May 2020. Jones Lang LaSalle Investments Limited Licence no.: C-082467.