

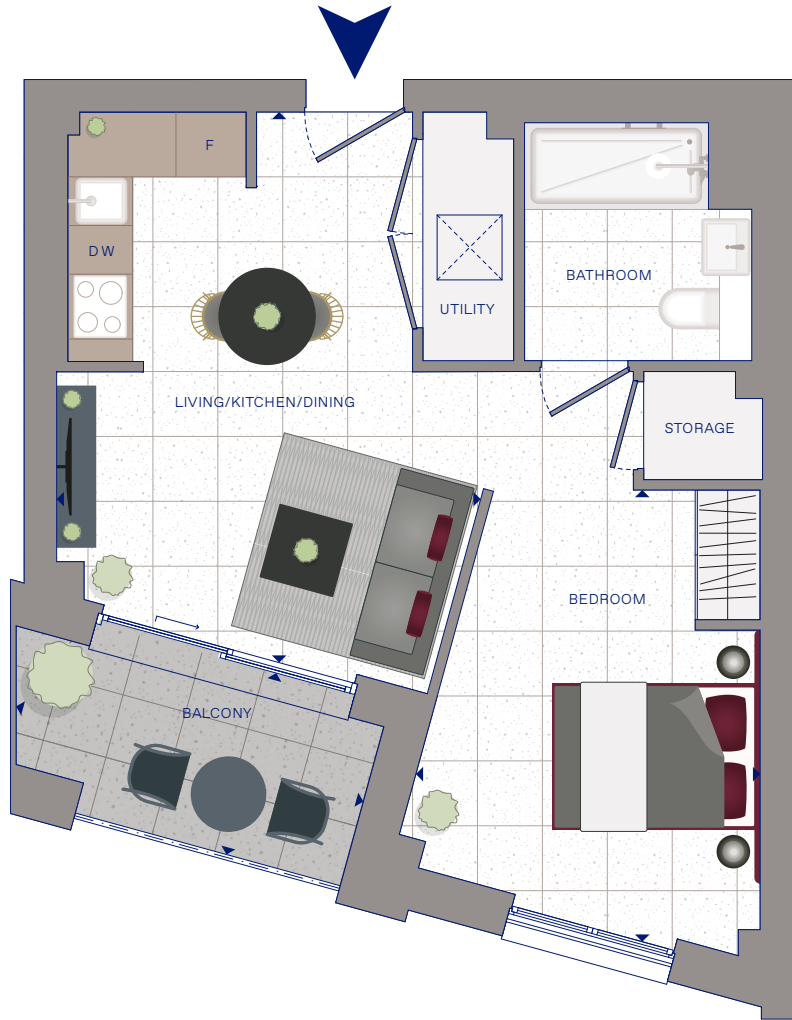


FLOOR PLAN

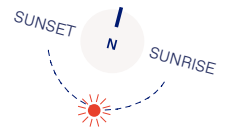
THE GEORGETTE

South

THE SILK DISTRICT
LONDON E1



- DW DISHWASHER
- X WASHING MACHINE
- F FRIDGE/FREEZER
- TERRAZZO

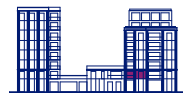
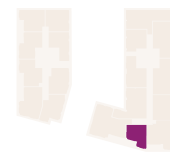
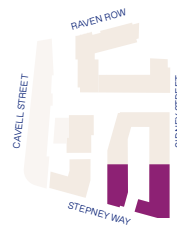


Total internal area	40.08 sq m	431 sq ft
LIVING/KITCHEN/DINING	3.91m x 5.09m	12'10" x 16'8"
BEDROOM	3.18m x 4.18m	10'5" x 13'8"
Total external area	5.42 sq m	58 sq ft
BALCONY	3.33m x 1.74m	10'11" x 5'9"

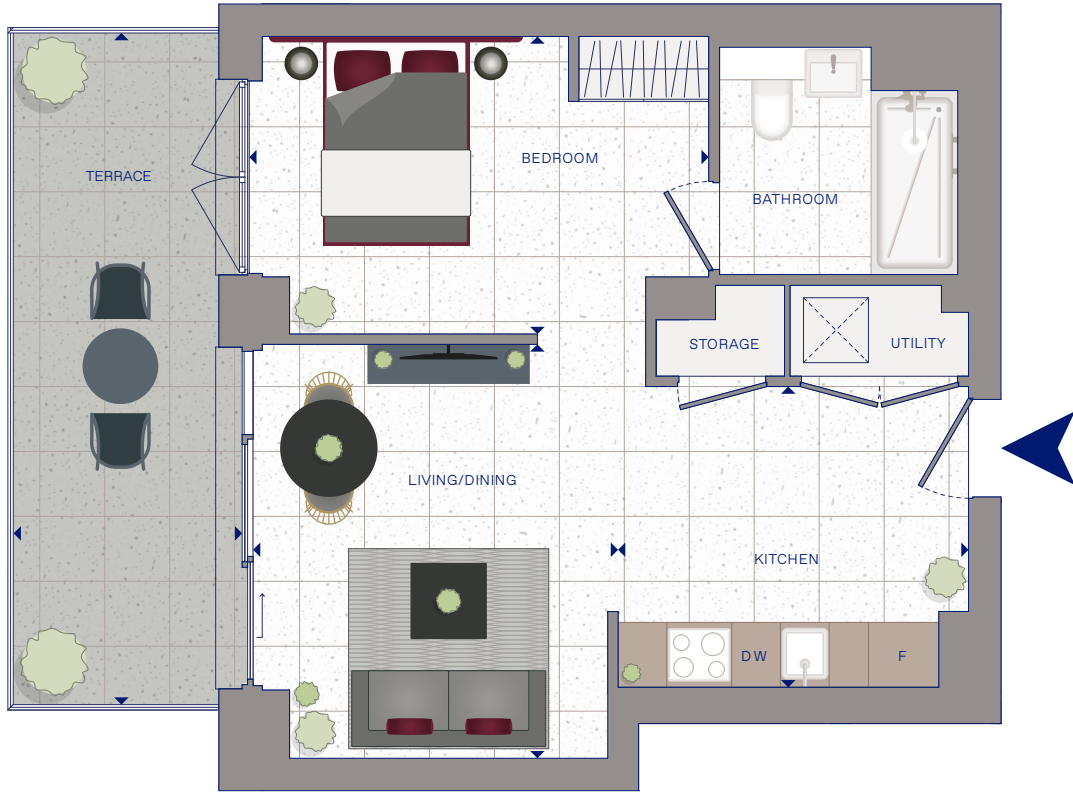
Masterplan

Floorplate

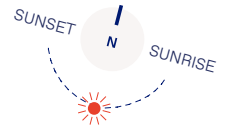
South elevation



The kitchen, furniture layouts and dimensions are for guidance only and are not to scale. All measurements given may vary within a tolerance of 5%. For more information on integrated appliances please see specification or speak to a sales consultant.

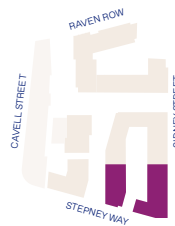


- DW DISHWASHER
- X WASHING MACHINE
- F FRIDGE/FREEZER
- TERRAZZO

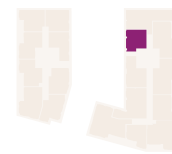


Total internal area	41.70 sq m	449 sq ft
LIVING/DINING	3.37m x 3.82m	11'1" x 12'7"
KITCHEN	3.24m x 2.78m	10'7" x 9'1"
BEDROOM	4.24m x 2.75m	13'11" x 9'0"
Total external area	12.86 sq m	138 sq ft
TERRACE	2.11m x 6.21m	6'11" x 20'4"

Masterplan



Floorplate







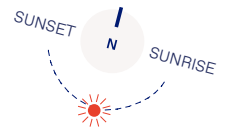
West courtyard elevation



The kitchen, furniture layouts and dimensions are for guidance only and are not to scale. All measurements given may vary within a tolerance of 5%. For more information on integrated appliances please see specification or speak to a sales consultant.

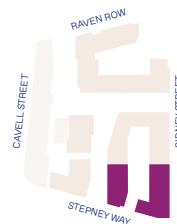


-  DISHWASHER
-  WASHING MACHINE
-  FRIDGE/FREEZER
-  TERRAZZO

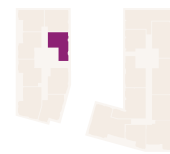


Total internal area	44.28 sq m	477 sq ft
LIVING	3.61m x 3.33m	11'10" x 10'11"
KITCHEN/DINING	3.07m x 2.70m	10'1" x 8'10"
BEDROOM	4.24m x 2.75m	13'11" x 9'0"
Total external area	15.81 sq m	170 sq ft
TERRACE	2.11m x 7.96m	6'11" x 26'1"

Masterplan



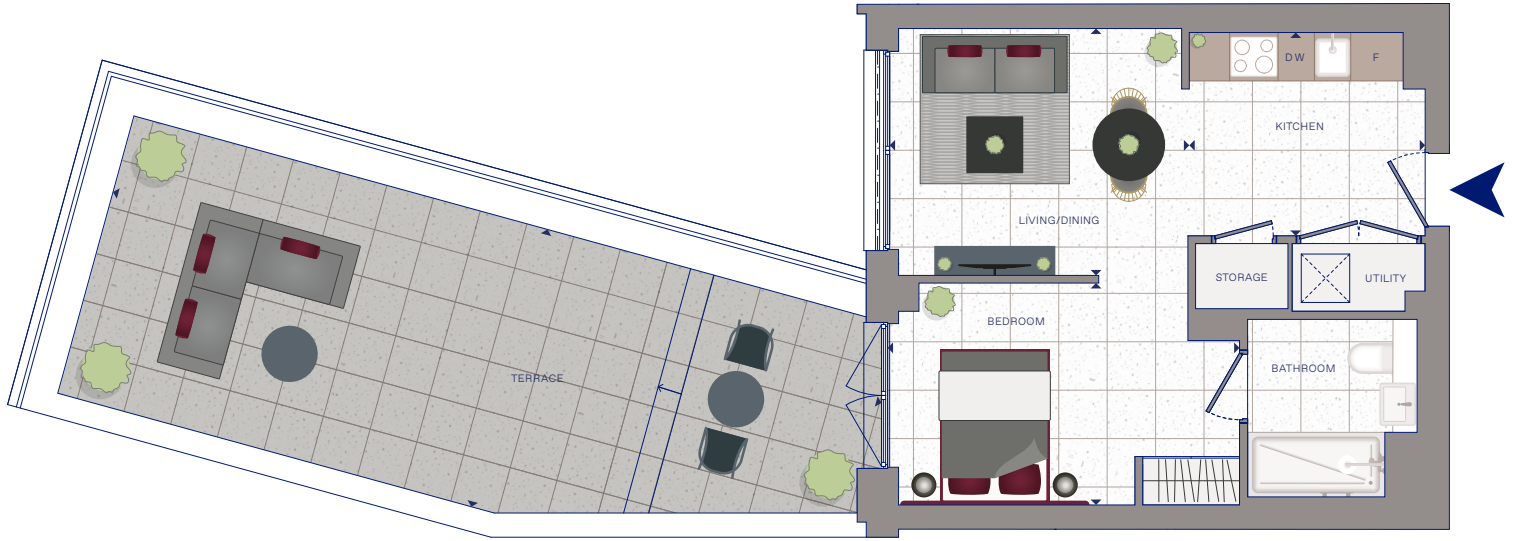
Floorplate



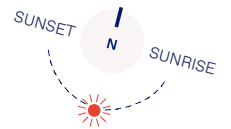
East courtyard elevation



The kitchen, furniture layouts and dimensions are for guidance only and are not to scale. All measurements given may vary within a tolerance of 5%. For more information on integrated appliances please see specification or speak to a sales consultant.

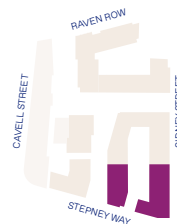


- DW DISHWASHER
- X WASHING MACHINE
- F FRIDGE/FREEZER
- TERRAZZO

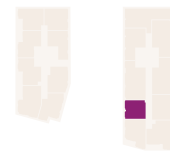


Total internal area	38.84 sq m	418 sq ft
LIVING/DINING	3.69m x 3.06m	12'1" x 10'0"
KITCHEN	2.92m x 2.52m	9'7" x 8'3"
BEDROOM	4.33m x 2.75m	14'3" x 9'0"
Total external area	32.64 sq m	351 sq ft
TERRACE	9.87m x 3.56m	32'5" x 11'8"

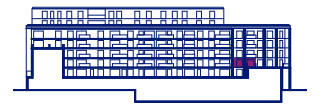
Masterplan



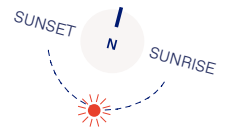
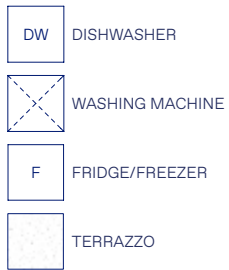
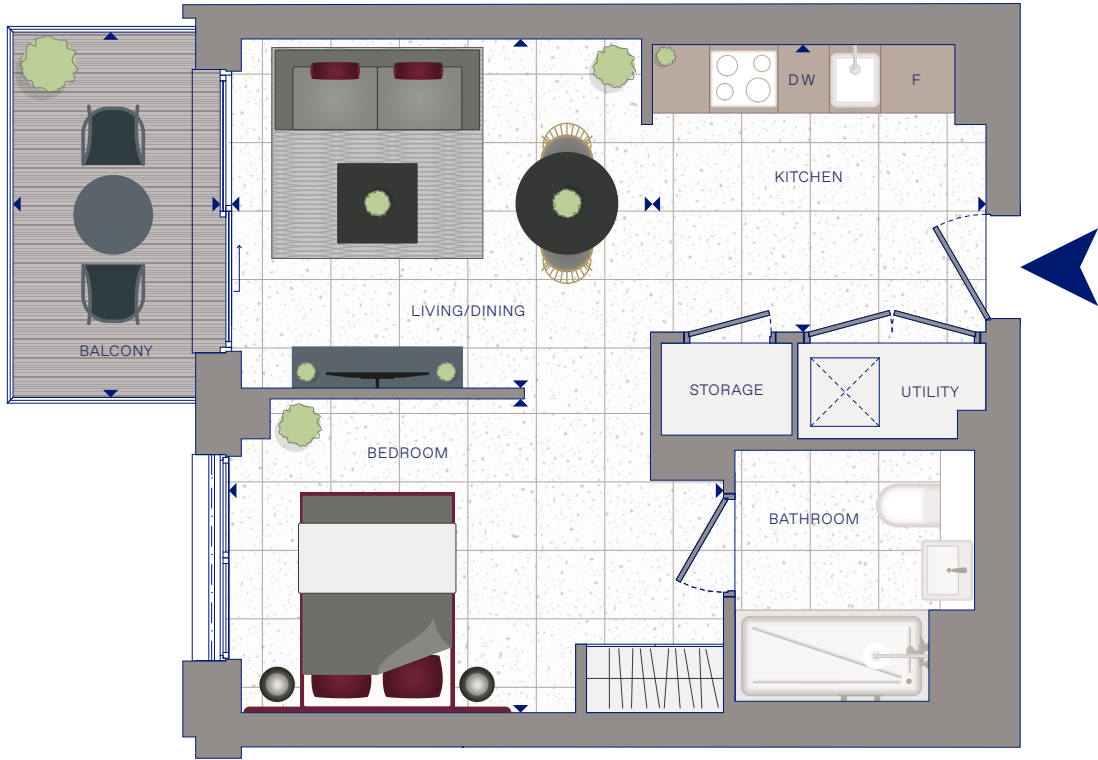
Floorplate



West courtyard elevation

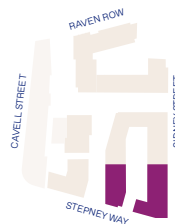


The kitchen, furniture layouts and dimensions are for guidance only and are not to scale. All measurements given may vary within a tolerance of 5%. For more information on integrated appliances please see specification or speak to a sales consultant.

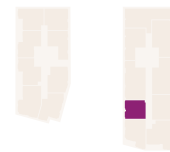


Total internal area	38.84 sq m	418 sq ft
LIVING/DINING	3.69m x 3.06m	12'1" x 10'0"
KITCHEN	2.92m x 2.52m	9'7" x 8'3"
BEDROOM	4.33m x 2.75m	14'3" x 9'0"
Total external area	5.66 sq m	61 sq ft
TERRACE	1.82m x 3.20m	5'11" x 10'6"

Masterplan



Floorplate









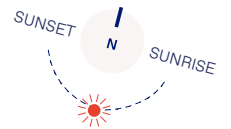
West courtyard elevation



The kitchen, furniture layouts and dimensions are for guidance only and are not to scale. All measurements given may vary within a tolerance of 5%. For more information on integrated appliances please see specification or speak to a sales consultant.

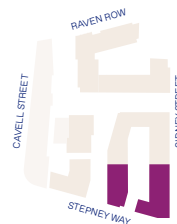


-  DW DISHWASHER
-  WASHING MACHINE
-  O OVEN
-  F FRIDGE/FREEZER
-  TERRAZZO
-  CARPET

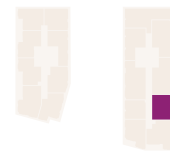


Total internal area	50.57 sq m	544 sq ft
LIVING	2.95m x 4.46m	9'8" x 14'7"
KITCHEN/DINING	3.00m x 3.72m	9'10" x 12'2"
BEDROOM	5.25m x 3.31m	17'3" x 10'10"
Total external area	8.06 sq m	87 sq ft
BALCONY	1.74m x 4.76m	5'9" x 15'7"

Masterplan



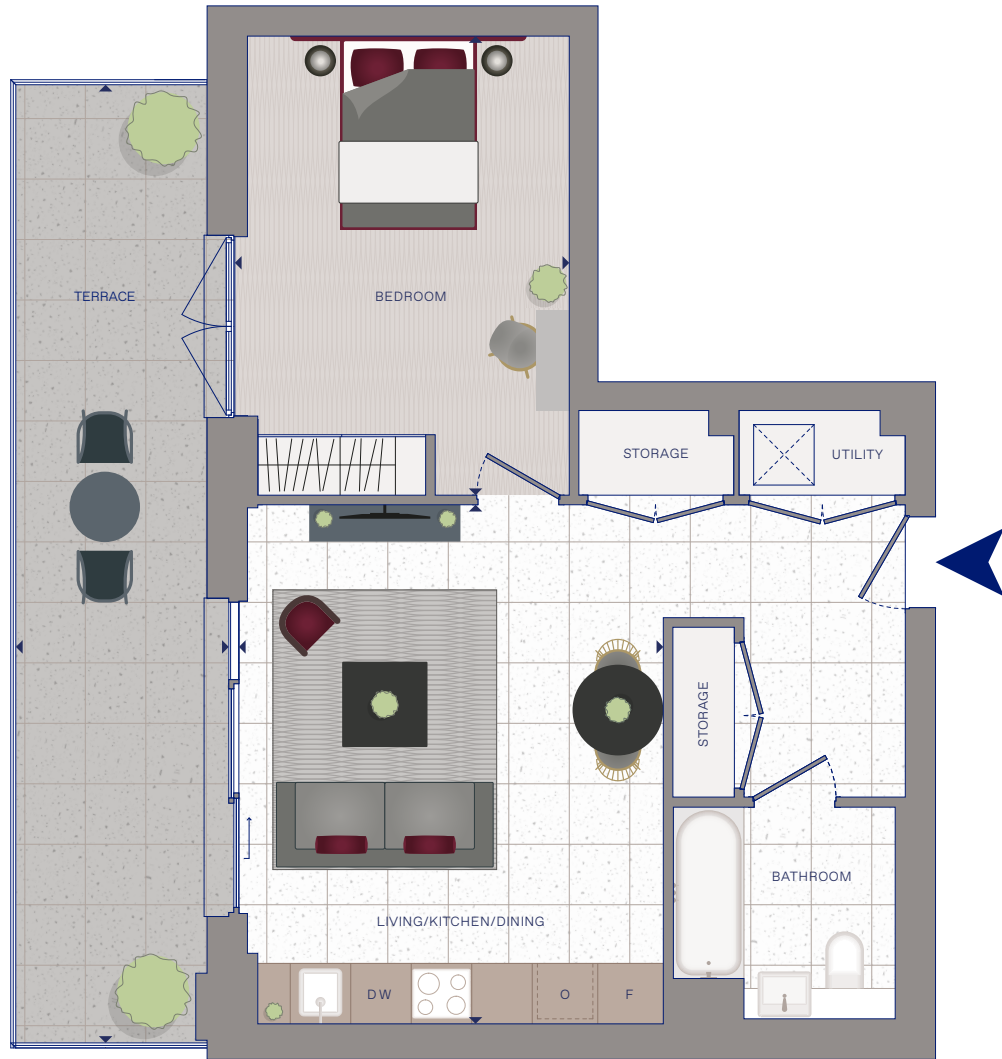
Floorplate



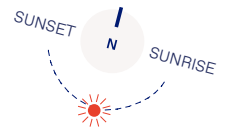
East elevation



The kitchen, furniture layouts and dimensions are for guidance only and are not to scale. All measurements given may vary within a tolerance of 5%. For more information on integrated appliances please see specification or speak to a sales consultant.

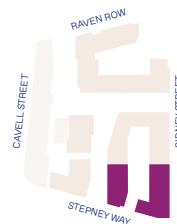


- DW DISHWASHER
- X WASHING MACHINE
- O OVEN
- F FRIDGE/FREEZER
- TERRAZZO
- CARPET

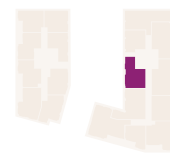


Total internal area	52.23 sq m	562 sq ft
LIVING/KITCHEN/DINING	4.21m x 5.15m	13'10" x 16'11"
BEDROOM	3.32m x 4.55m	10'11" x 14'11"
Total external area	19.04 sq m	205 sq ft
TERRACE	2.11m x 9.51m	6'11" x 31'2"

Masterplan



Floorplate









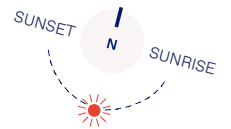
West courtyard elevation



The kitchen, furniture layouts and dimensions are for guidance only and are not to scale. All measurements given may vary within a tolerance of 5%. For more information on integrated appliances please see specification or speak to a sales consultant.

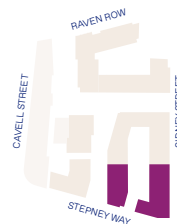


-  DW DISHWASHER
-  WASHING MACHINE
-  O OVEN
-  F FRIDGE/FREEZER
-  TERRAZZO
-  CARPET

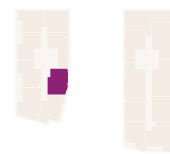


Total internal area	51.15 sq m	551 sq ft
LIVING/DINING	3.25m x 4.74m	10'8" x 15'6"
KITCHEN	2.47m x 2.70m	8'1" x 8'10"
BEDROOM	4.01m x 3.50m	13'2" x 11'6"
Total external area	5.95 sq m	64 sq ft
BALCONY	1.73m x 3.48m	5'8" x 11'5"

Masterplan



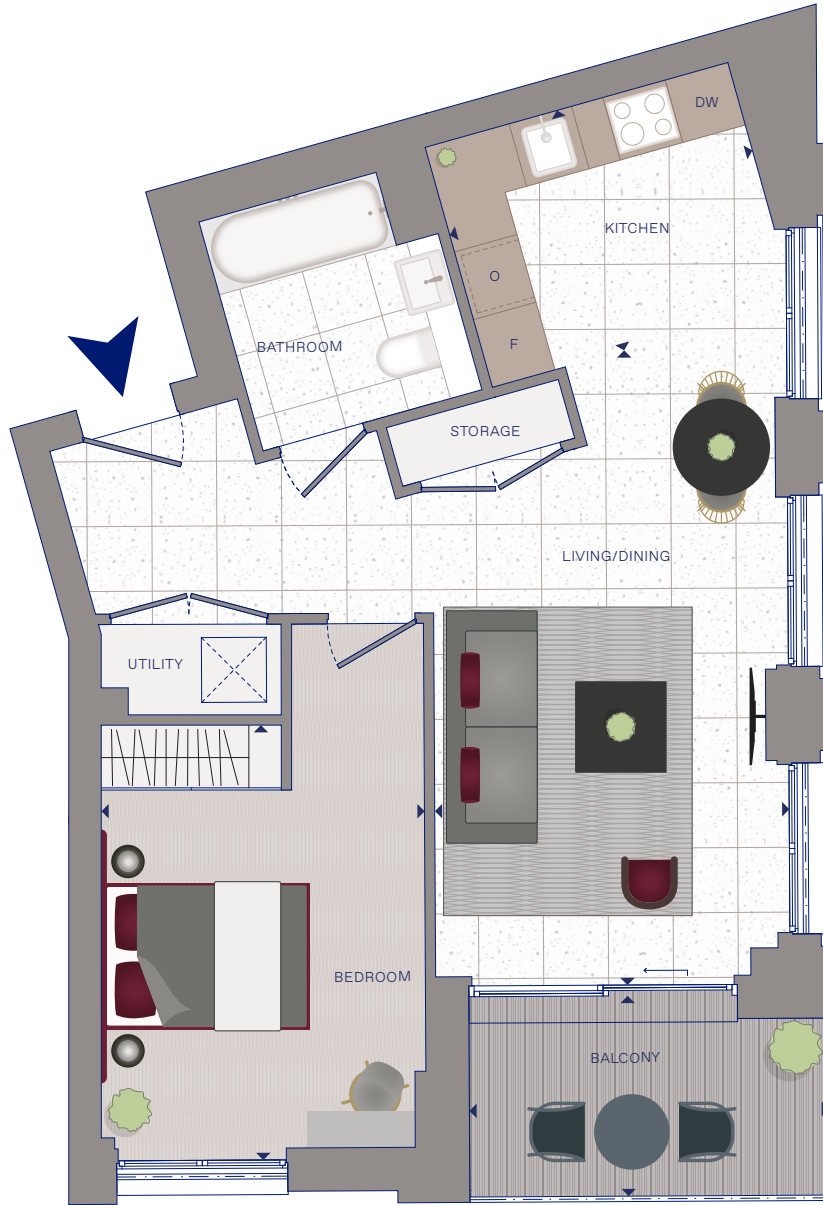
Floorplate



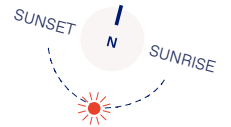
East courtyard elevation



The kitchen, furniture layouts and dimensions are for guidance only and are not to scale. All measurements given may vary within a tolerance of 5%. For more information on integrated appliances please see specification or speak to a sales consultant.

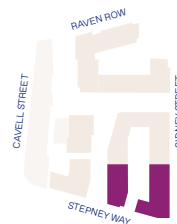


- DW DISHWASHER
- X WASHING MACHINE
- O OVEN
- F FRIDGE/FREEZER
- TERRAZZO
- CARPET

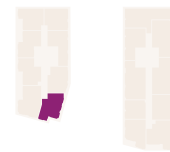


Total internal area	51.94 sq m	559 sq ft
LIVING/DINING	3.28m x 5.87m	10'9" x 19'3"
KITCHEN	2.91m x 2.30m	9'6" x 7'7"
BEDROOM	2.99m x 4.02m	9'10" x 13'2"
Total external area	5.98 sq m	64 sq ft
BALCONY	3.33m x 1.85m	10'11" x 6'1"

Masterplan



Floorplate



East courtyard elevation



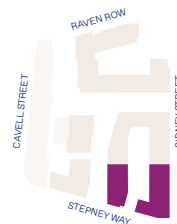
The kitchen, furniture layouts and dimensions are for guidance only and are not to scale. All measurements given may vary within a tolerance of 5%. For more information on integrated appliances please see specification or speak to a sales consultant.



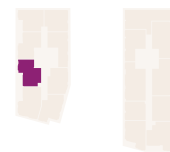
- DW DISHWASHER
- X WASHING MACHINE
- O OVEN
- F FRIDGE/FREEZER
- TERRAZZO
- CARPET

Total internal area	50.22 sq m	541 sq ft
LIVING	3.37m x 3.94m	11'1" x 12'11"
KITCHEN/DINING	2.58m x 3.44m	8'6" x 11'3"
BEDROOM	3.55m x 4.27m	11'8" x 14'0"
Total external area	7.03 sq m	76 sq ft
BALCONY	1.74m x 4.09m	5'9" x 13'5"

Masterplan



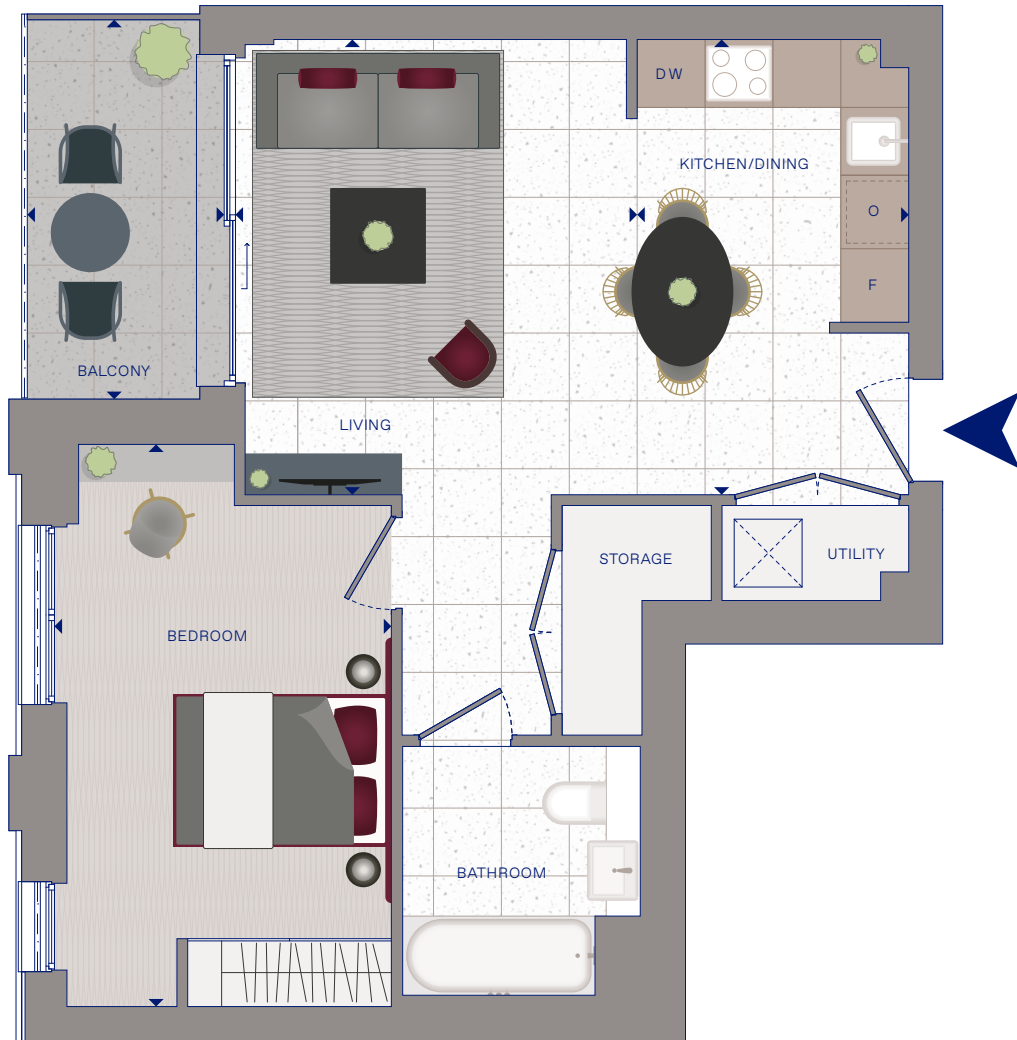
Floorplate



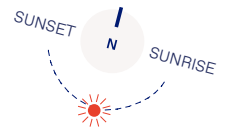
West elevation



The kitchen, furniture layouts and dimensions are for guidance only and are not to scale. All measurements given may vary within a tolerance of 5%. For more information on integrated appliances please see specification or speak to a sales consultant.

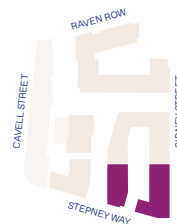


- DW DISHWASHER
- X WASHING MACHINE
- O OVEN
- F FRIDGE/FREEZER
- TERRAZZO
- CARPET

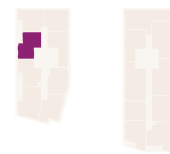


Total internal area	50.07 sq m	539 sq ft
LIVING	3.55m x 4.02m	11'8" x 13'2"
KITCHEN/DINING	2.40m x 4.02m	7'10" x 13'2"
BEDROOM	2.97m x 4.97m	9'9" x 16'4"
Total external area	5.75 sq m	62 sq ft
BALCONY	1.74m x 3.35m	5'9" x 11'0"

Masterplan



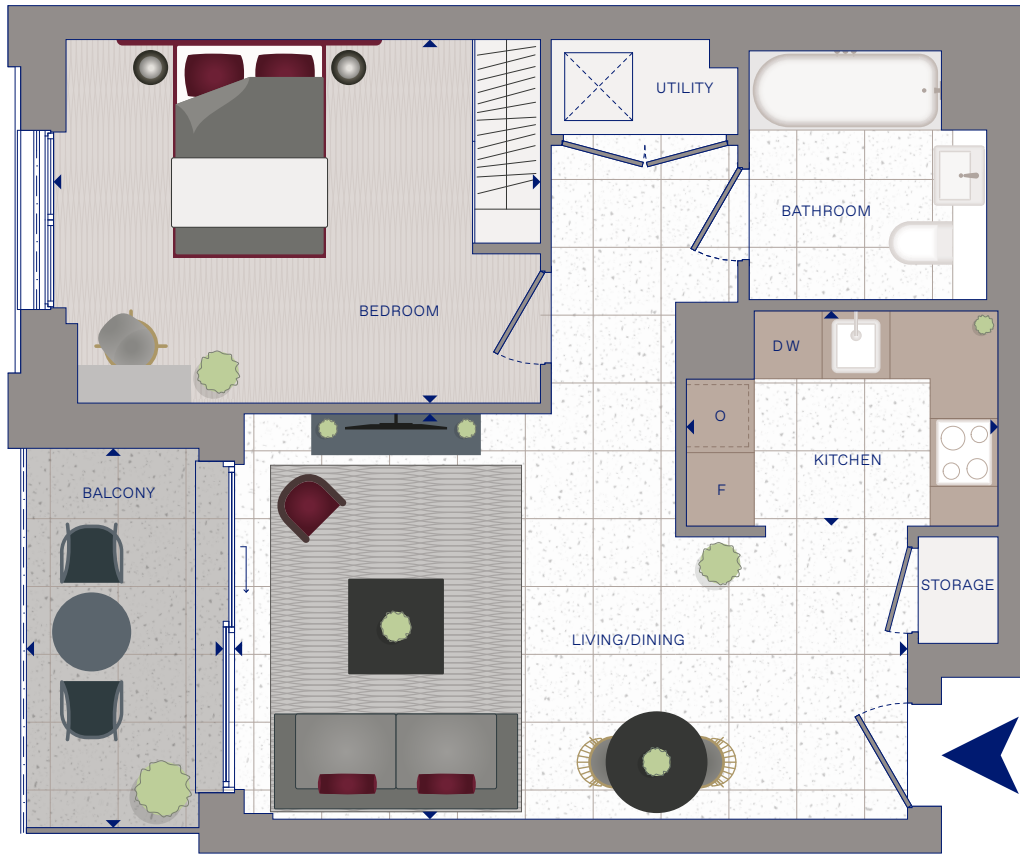
Floorplate









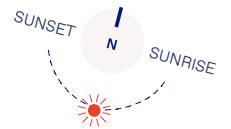
West elevation



The kitchen, furniture layouts and dimensions are for guidance only and are not to scale. All measurements given may vary within a tolerance of 5%. For more information on integrated appliances please see specification or speak to a sales consultant.

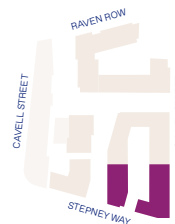


-  DW DISHWASHER
-  WASHING MACHINE
-  O OVEN
-  F FRIDGE/FREEZER
-  TERRAZZO
-  CARPET

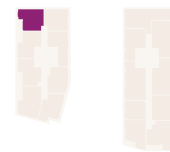


Total internal area	50.11 sq m	539 sq ft
LIVING/DINING	5.95m x 3.59m	19'6" x 11'9"
KITCHEN	2.76m x 1.90m	9'0" x 6'3"
BEDROOM	4.30m x 3.22m	14'1" x 10'7"
Total external area	5.75 sq m	62 sq ft
BALCONY	1.74m x 3.36m	5'9" x 11'0"

Masterplan



Floorplate



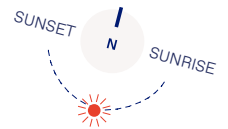
West elevation



The kitchen, furniture layouts and dimensions are for guidance only and are not to scale. All measurements given may vary within a tolerance of 5%. For more information on integrated appliances please see specification or speak to a sales consultant.

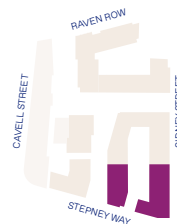


- DW DISHWASHER
- X WASHING MACHINE
- O OVEN
- F FRIDGE/FREEZER
- TERRAZZO
- CARPET

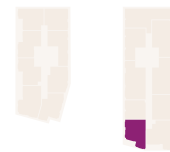


Total internal area	51.07 sq m	550 sq ft
LIVING	3.64m x 3.31m	11'11" x 10'10"
KITCHEN/DINING	2.73m x 3.40m	9'0" x 11'2"
BEDROOM	3.29m x 5.86m	10'9" x 19'3"
Total external area	76.88 sq m	828 sq ft
BALCONY	15.35m x 6.84m	50'4" x 22'5"

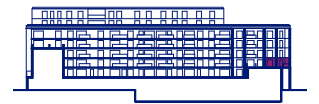
Masterplan



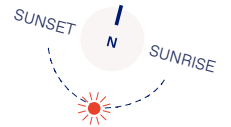
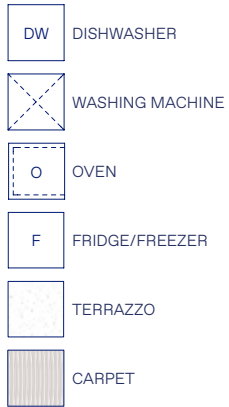
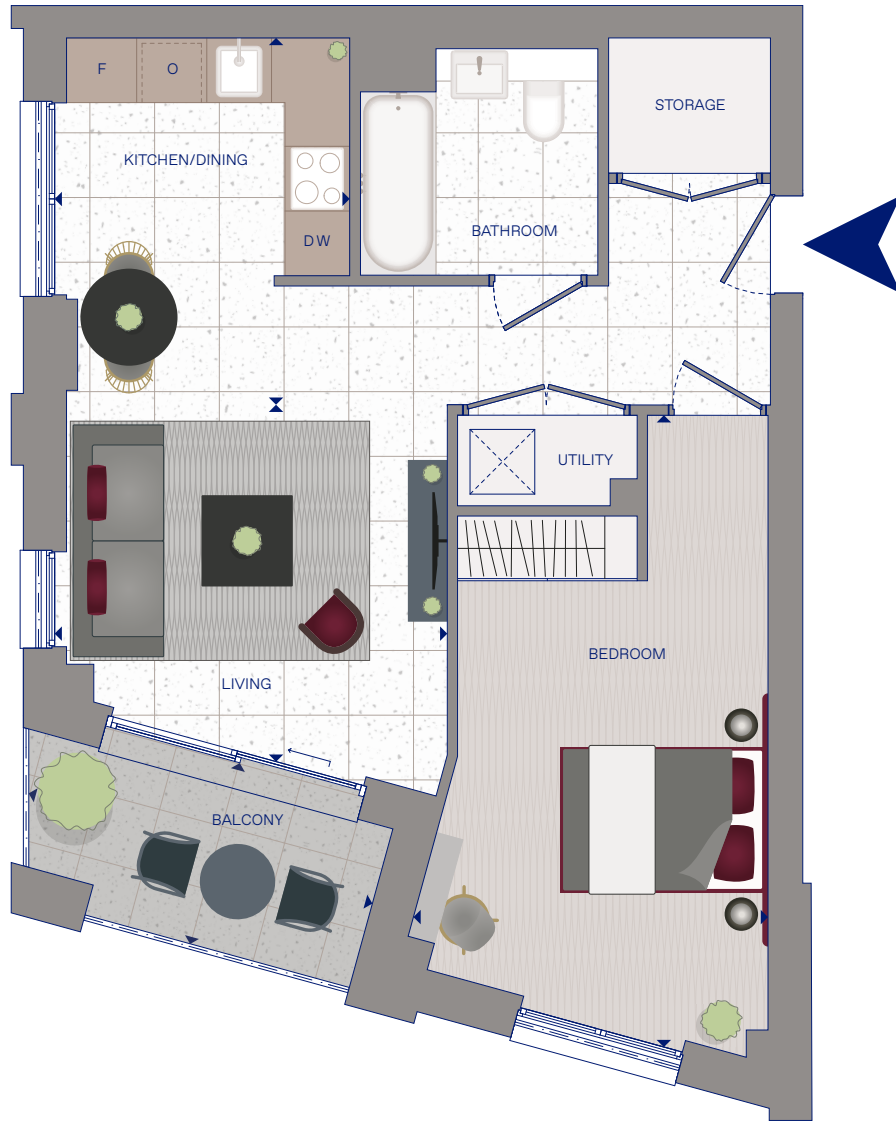
Floorplate



West courtyard elevation

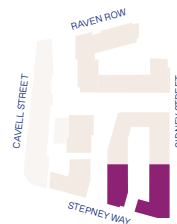


The kitchen, furniture layouts and dimensions are for guidance only and are not to scale. All measurements given may vary within a tolerance of 5%. For more information on integrated appliances please see specification or speak to a sales consultant.

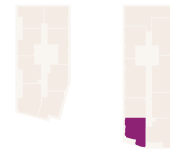


Total internal area	51.07 sq m	550 sq ft
LIVING	3.64m x 3.31m	11'11" x 10'10"
KITCHEN/DINING	2.73m x 3.40m	9'0" x 11'2"
BEDROOM	3.29m x 5.86m	10'9" x 19'3"
Total external area	5.39 sq m	58 sq ft
BALCONY	3.34m x 1.74m	11'0" x 5'9"

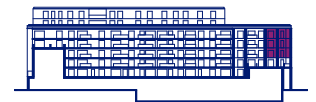
Masterplan



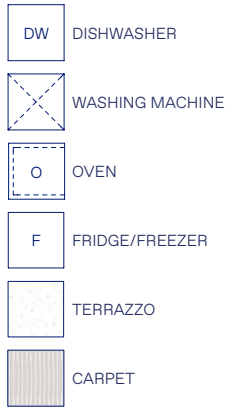
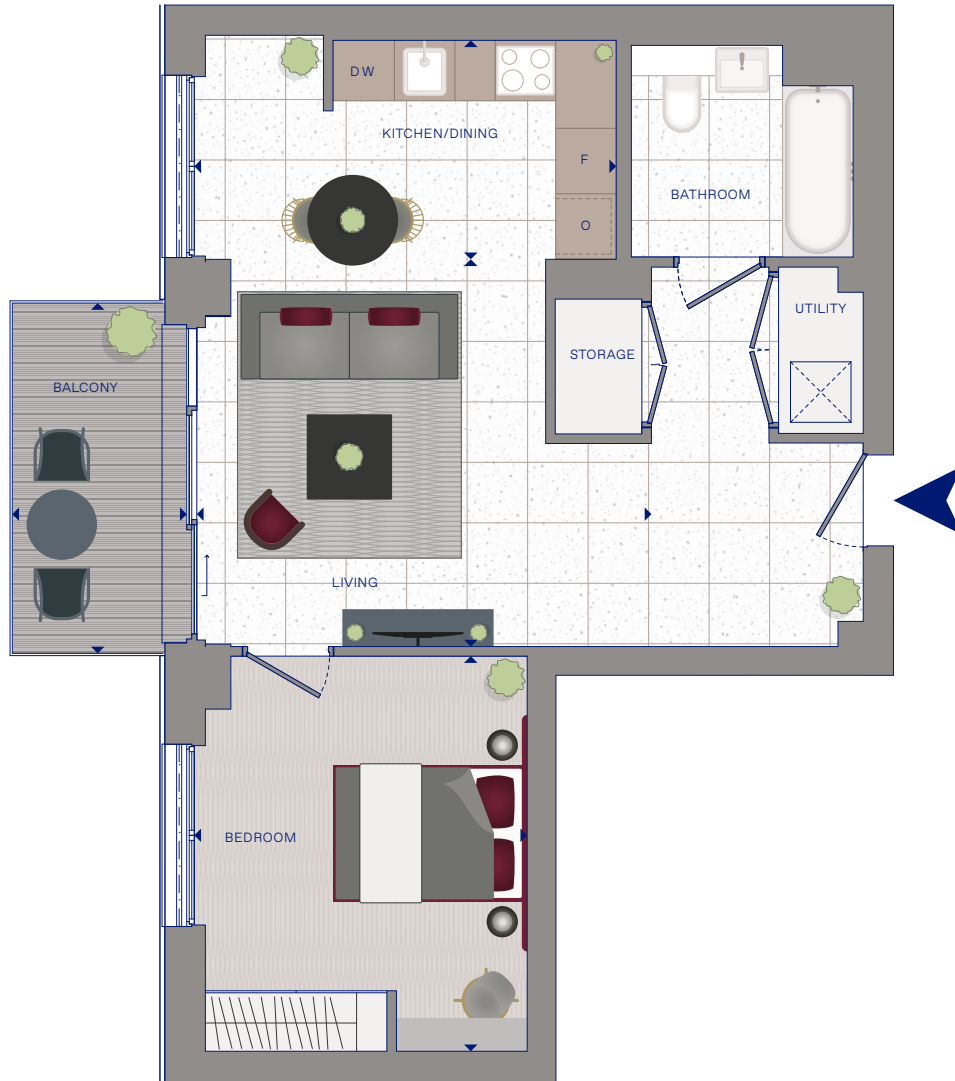
Floorplate



West courtyard elevation

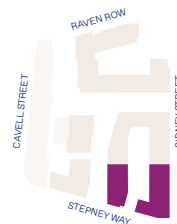


The kitchen, furniture layouts and dimensions are for guidance only and are not to scale. All measurements given may vary within a tolerance of 5%. For more information on integrated appliances please see specification or speak to a sales consultant.

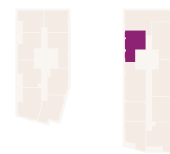


	52.78 sq m	568 sq ft
Total internal area		
LIVING	4.51m x 3.84m	14'10" x 12'7"
KITCHEN/DINING	4.18m x 2.17m	13'9" x 7'2"
BEDROOM	3.30m x 3.92m	10'10" x 12'10"
Total external area	5.96 sq m	64 sq ft
BALCONY	1.73m x 3.48m	5'8" x 11'5"

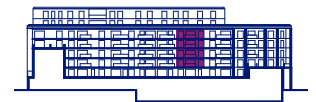
Masterplan



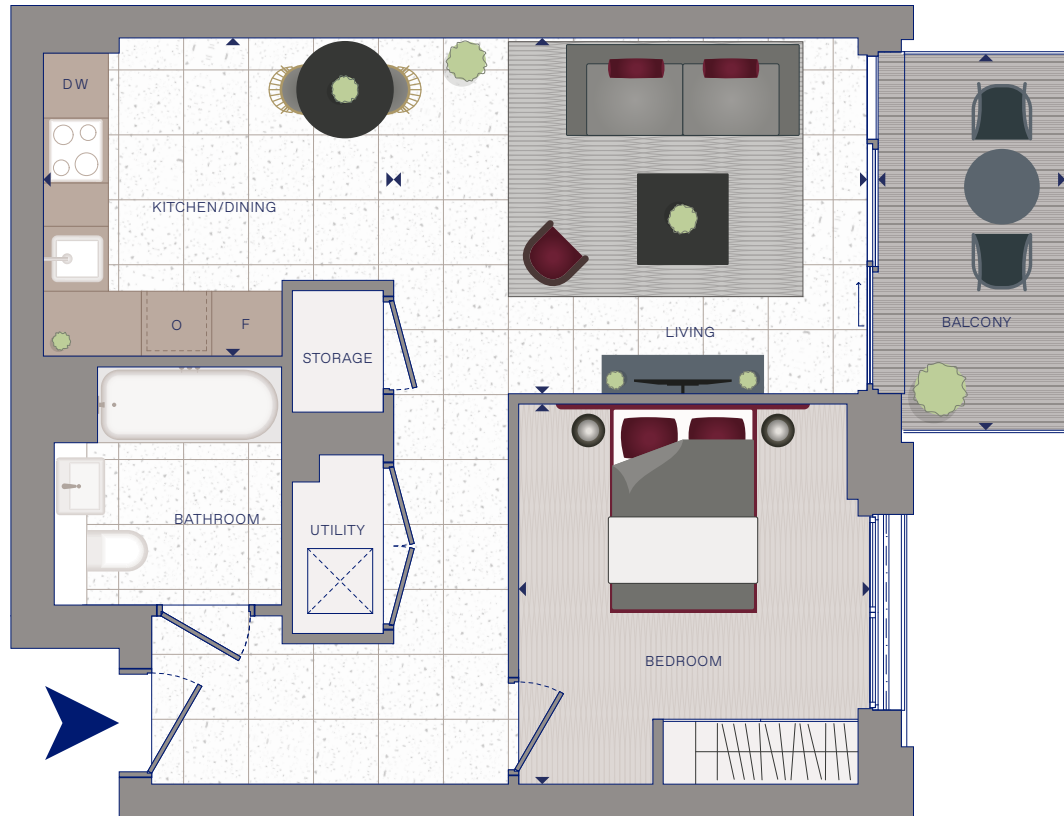
Floorplate



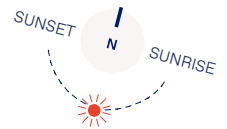
West courtyard elevation



The kitchen, furniture layouts and dimensions are for guidance only and are not to scale. All measurements given may vary within a tolerance of 5%. For more information on integrated appliances please see specification or speak to a sales consultant.

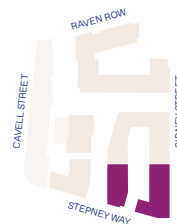


- DW DISHWASHER
- X WASHING MACHINE
- O OVEN
- F FRIDGE/FREEZER
- TERRAZZO
- CARPET

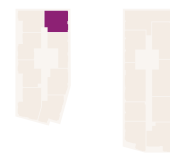


Total internal area	50.70 sq m	546 sq ft
LIVING	4.37m x 3.29m	14'4" x 10'9"
KITCHEN/DINING	3.23m x 2.94m	10'7" x 9'8"
BEDROOM	3.24m x 3.51m	10'8" x 11'6"
Total external area	5.94 sq m	64 sq ft
BALCONY	1.73m x 3.48m	5'8" x 11'5"

Masterplan



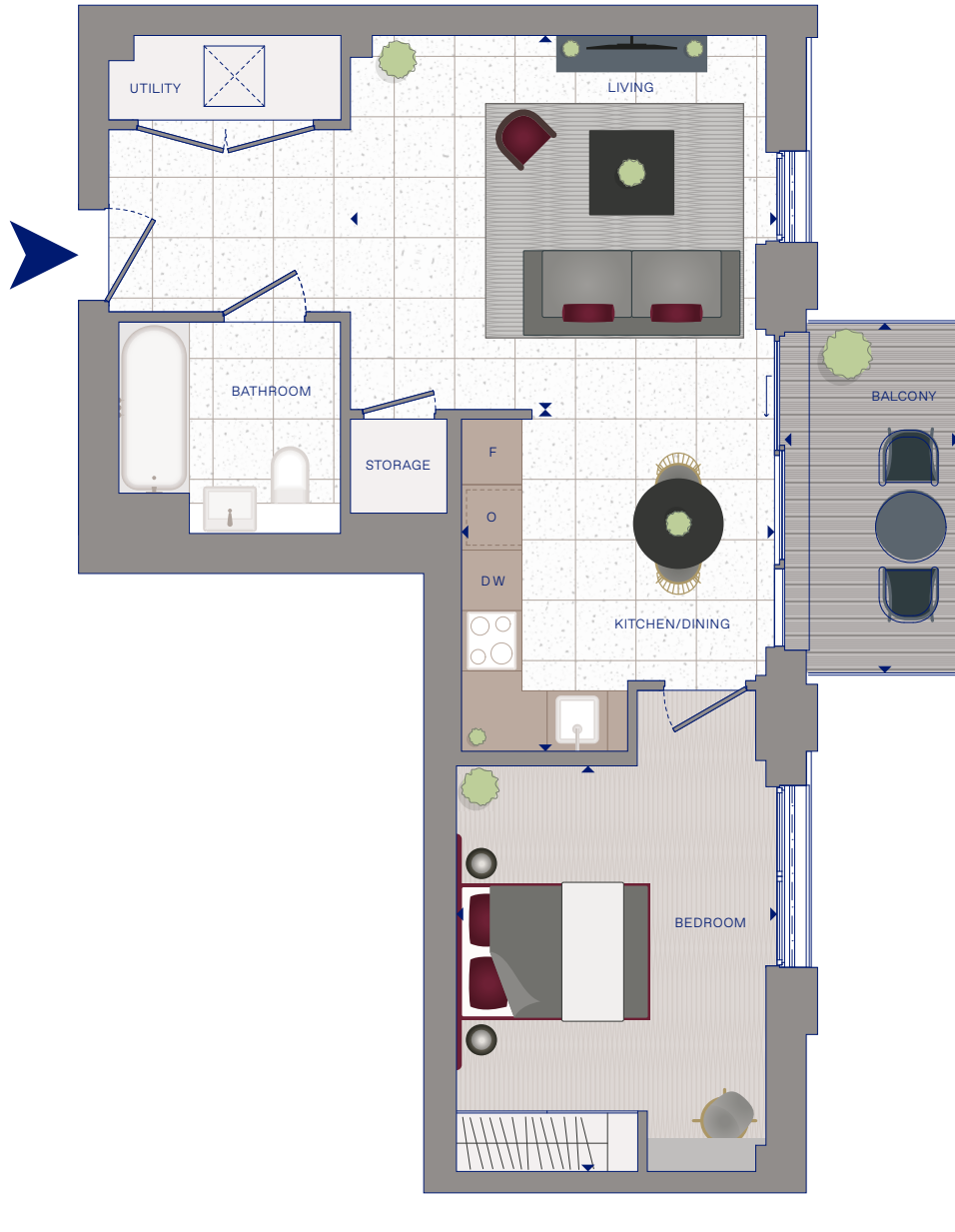
Floorplate



East courtyard elevation



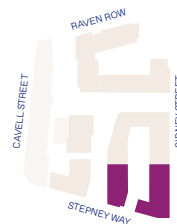
The kitchen, furniture layouts and dimensions are for guidance only and are not to scale. All measurements given may vary within a tolerance of 5%. For more information on integrated appliances please see specification or speak to a sales consultant.



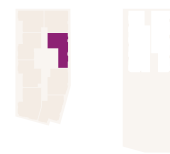
- DW DISHWASHER
- X WASHING MACHINE
- O OVEN
- F FRIDGE/FREEZER
- TERRAZZO
- CARPET

Total internal area	52.14 sq m	561 sq ft
LIVING	4.24m x 3.72m	13'11" x 12'2"
KITCHEN/DINING	3.11m x 3.39m	10'2" x 11'2"
BEDROOM	3.18m x 4.03m	10'5" x 13'3"
Total external area	5.95 sq m	64 sq ft
TERRACE	1.73m x 3.48m	5'8" x 11'5"

Masterplan



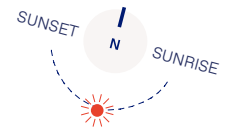
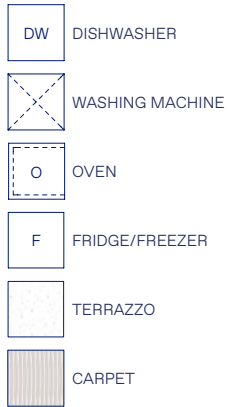
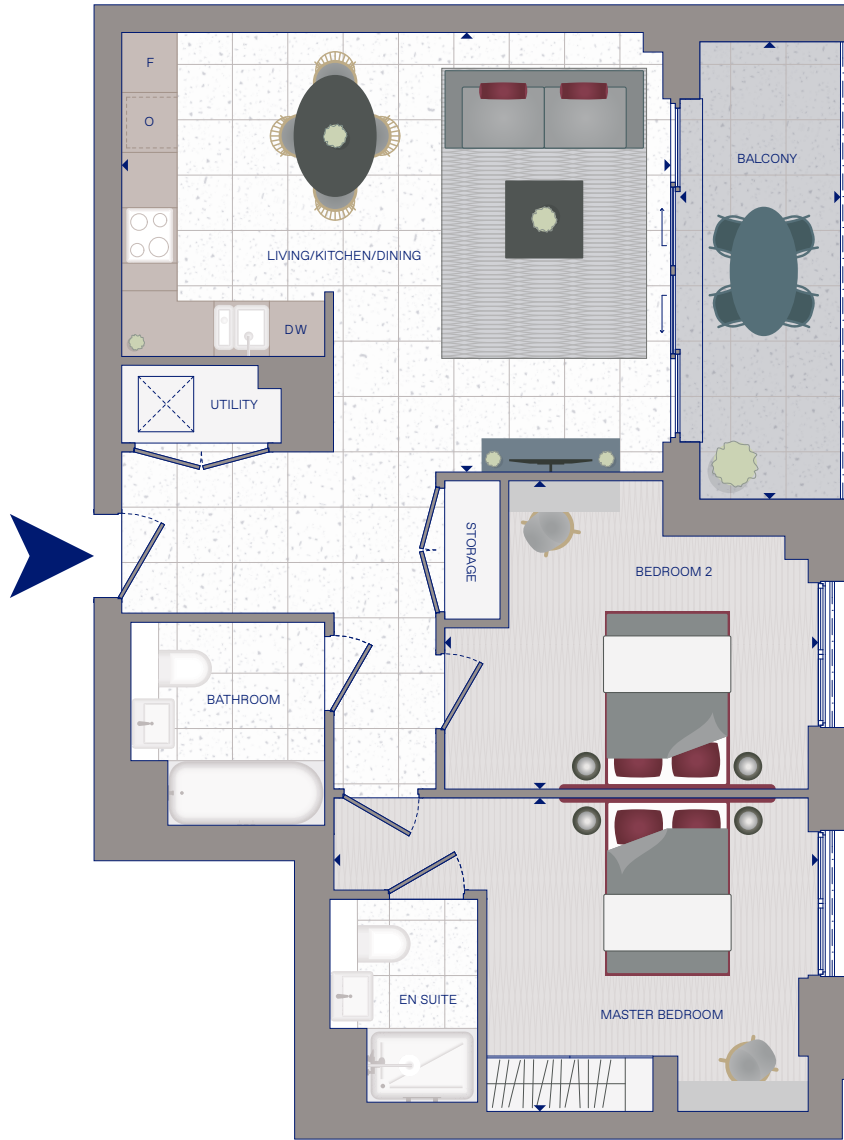
Floorplate



East courtyard elevation

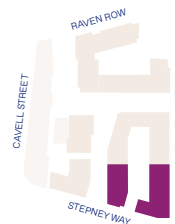


The kitchen, furniture layouts and dimensions are for guidance only and are not to scale. All measurements given may vary within a tolerance of 5%. For more information on integrated appliances please see specification or speak to a sales consultant.

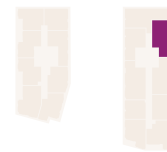


Total internal area	72.46 sq m	780 sq ft
LIVING/KITCHEN/DINING	5.95m x 4.77m	19'6" x 15'8"
MASTER BEDROOM	5.25m x 3.40m	17'3" x 11'2"
BEDROOM 2	4.05m x 3.34m	13'3" x 11'0"
Total external area	8.39 sq m	90 sq ft
BALCONY	1.74m x 4.96m	5'9" x 16'3"

Masterplan



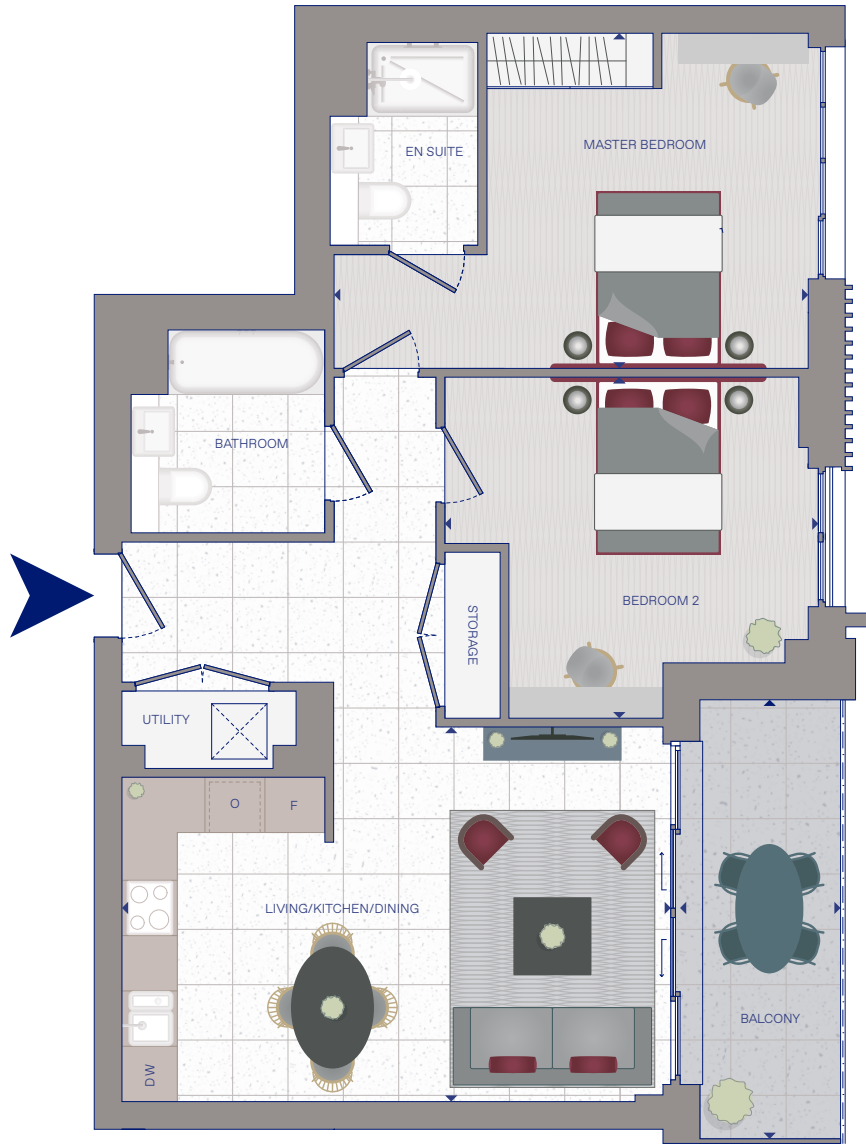
Floorplate









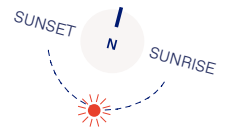
East elevation



The kitchen, furniture layouts and dimensions are for guidance only and are not to scale. All measurements given may vary within a tolerance of 5%. For more information on integrated appliances please see specification or speak to a sales consultant.

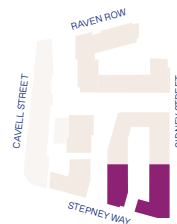


-  DISHWASHER
-  WASHING MACHINE
-  OVEN
-  FRIDGE/FREEZER
-  TERRAZZO
-  CARPET

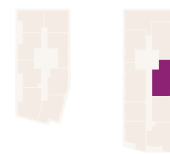


Total internal area	72.54 sq m	781 sq ft
LIVING/KITCHEN/DINING	5.95m x 4.06m	19'6" x 13'4"
MASTER BEDROOM	5.25m x 3.63m	17'3" x 11'11"
BEDROOM 2	4.05m x 3.70m	13'3" x 12'2"
Total external area	8.06 sq m	87 sq ft
BALCONY	1.74m x 4.76m	5'9" x 15'7"

Masterplan



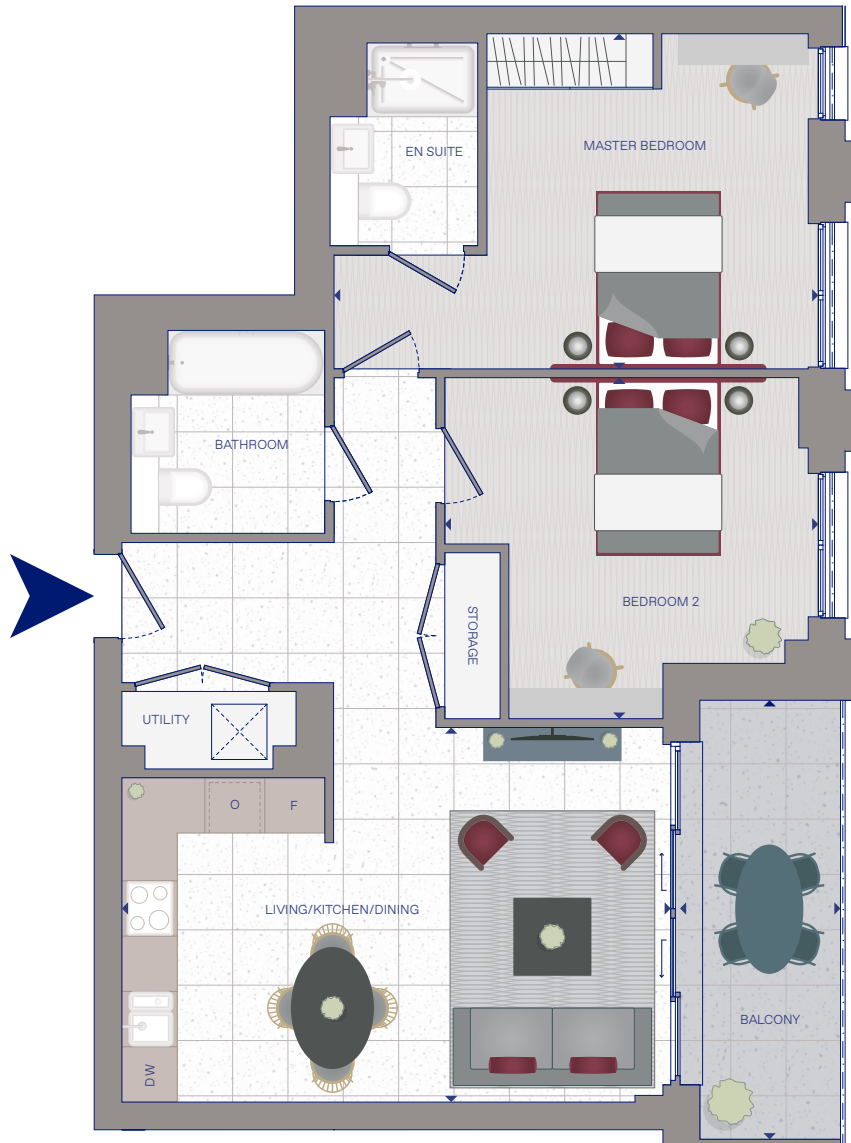
Floorplate









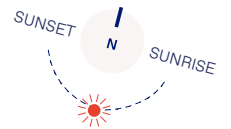
East elevation



The kitchen, furniture layouts and dimensions are for guidance only and are not to scale. All measurements given may vary within a tolerance of 5%. For more information on integrated appliances please see specification or speak to a sales consultant.

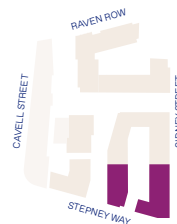


-  DISHWASHER
-  WASHING MACHINE
-  OVEN
-  FRIDGE/FREEZER
-  TERRAZZO
-  CARPET

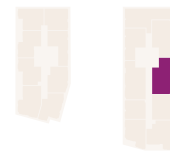


Total internal area	72.54 sq m	781 sq ft
LIVING/KITCHEN/DINING	5.95m x 4.06m	19'6" x 13'4"
MASTER BEDROOM	5.25m x 3.63m	17'3" x 11'11"
BEDROOM 2	4.05m x 3.70m	13'3" x 12'2"
Total external area	8.06 sq m	87 sq ft
BALCONY	1.74m x 4.76m	5'9" x 15'7"

Masterplan



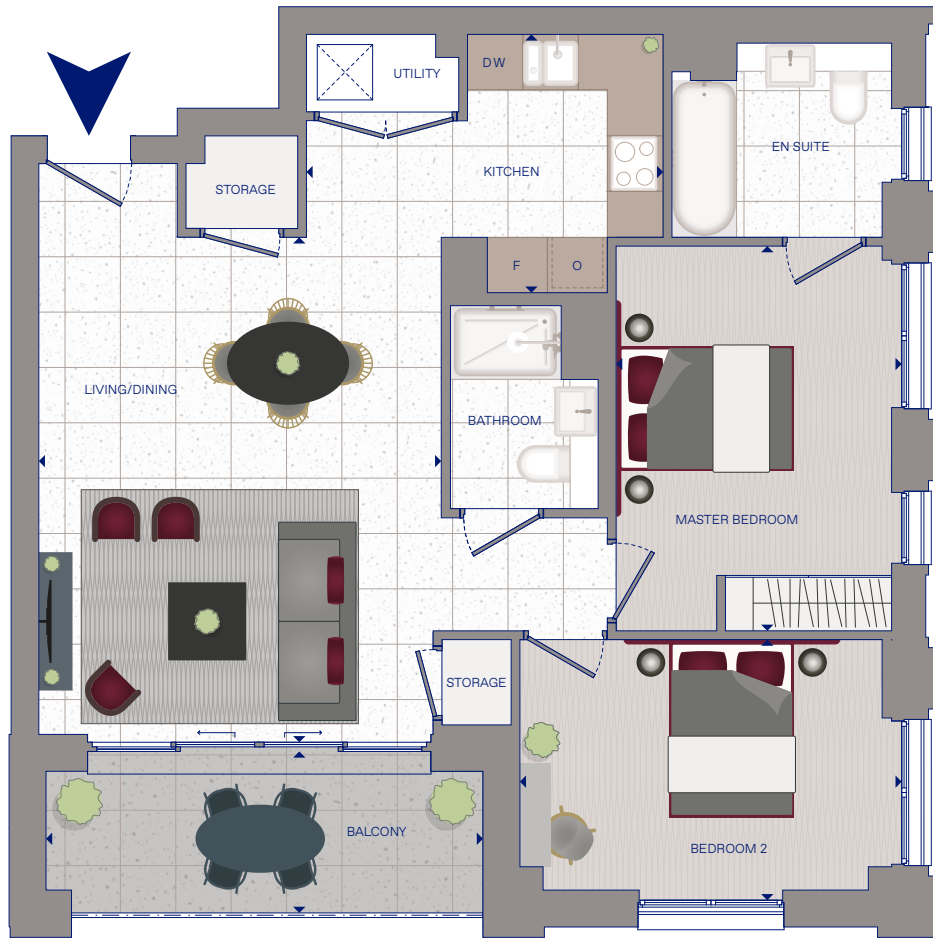
Floorplate









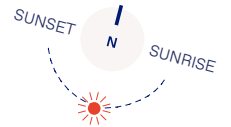
East elevation



The kitchen, furniture layouts and dimensions are for guidance only and are not to scale. All measurements given may vary within a tolerance of 5%. For more information on integrated appliances please see specification or speak to a sales consultant.



-  DW DISHWASHER
-  WASHING MACHINE
-  O OVEN
-  F FRIDGE/FREEZER
-  TERRAZZO
-  CARPET

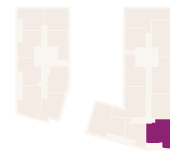
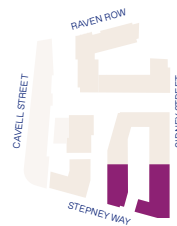


Total internal area	73.79 sq m	794 sq ft
LIVING/DINING	4.36m x 5.47m	14'4" x 17'11"
KITCHEN	3.87m x 2.80m	12'8" x 9'2"
MASTER BEDROOM	3.09m x 4.17m	10'2" x 13'8"
BEDROOM 2	4.14m x 2.83m	13'7" x 9'3"
Total external area	8.00 sq m	86 sq ft
BALCONY	4.74m x 1.75m	15'6" x 5'9"

Masterplan

Floorplate

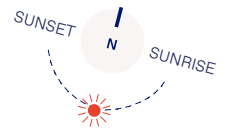
East elevation



The kitchen, furniture layouts and dimensions are for guidance only and are not to scale. All measurements given may vary within a tolerance of 5%. For more information on integrated appliances please see specification or speak to a sales consultant.

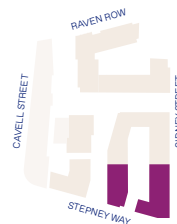


- DW DISHWASHER
- W WASHING MACHINE
- O OVEN
- F FRIDGE/FREEZER
- TERRAZZO
- CARPET

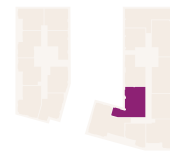


Total internal area	74.96 sq m	807 sq ft
LIVING/KITCHEN/DINING	6.61m x 4.40m	21'8" x 14'5"
MASTER BEDROOM	4.86m x 3.00m	15'11" x 9'10"
BEDROOM 2	4.24m x 2.75m	13'11" x 9'0"
Total external area	19.31 sq m	208 sq ft
TERRACE	3.28m x 7.07m	10'9" x 23'2"

Masterplan



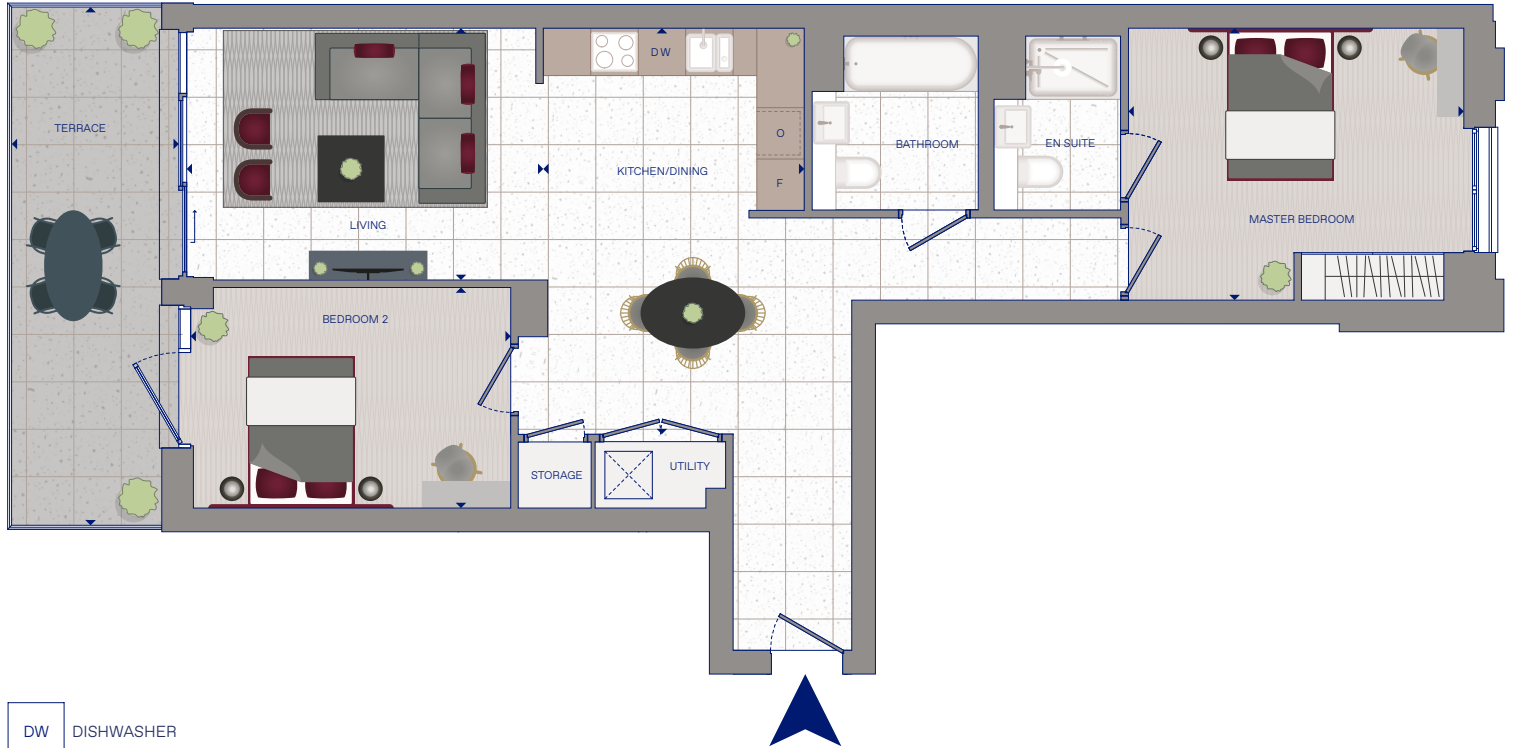
Floorplate









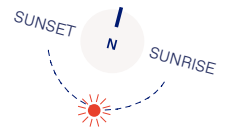
West courtyard elevation



The kitchen, furniture layouts and dimensions are for guidance only and are not to scale. All measurements given may vary within a tolerance of 5%. For more information on integrated appliances please see specification or speak to a sales consultant.

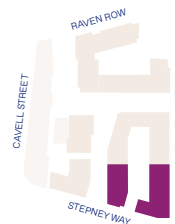


-  DISHWASHER
-  WASHING MACHINE
-  OVEN
-  FRIDGE/FREEZER
-  TERRAZZO
-  CARPET

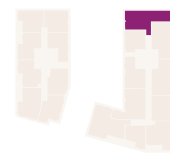


Total internal area	80.37 sq m	865 sq ft
LIVING	4.51m x 3.19m	14'10" x 10'5"
KITCHEN/DINING	3.30m x 5.14m	10'10" x 16'10"
MASTER BEDROOM	4.24m x 3.44m	13'11" x 11'3"
BEDROOM 2	4.05m x 2.79m	13'3" x 9'2"
Total external area	13.50 sq m	145 sq ft
BALCONY	2.11m x 6.56m	6'11" x 21'6"

Masterplan



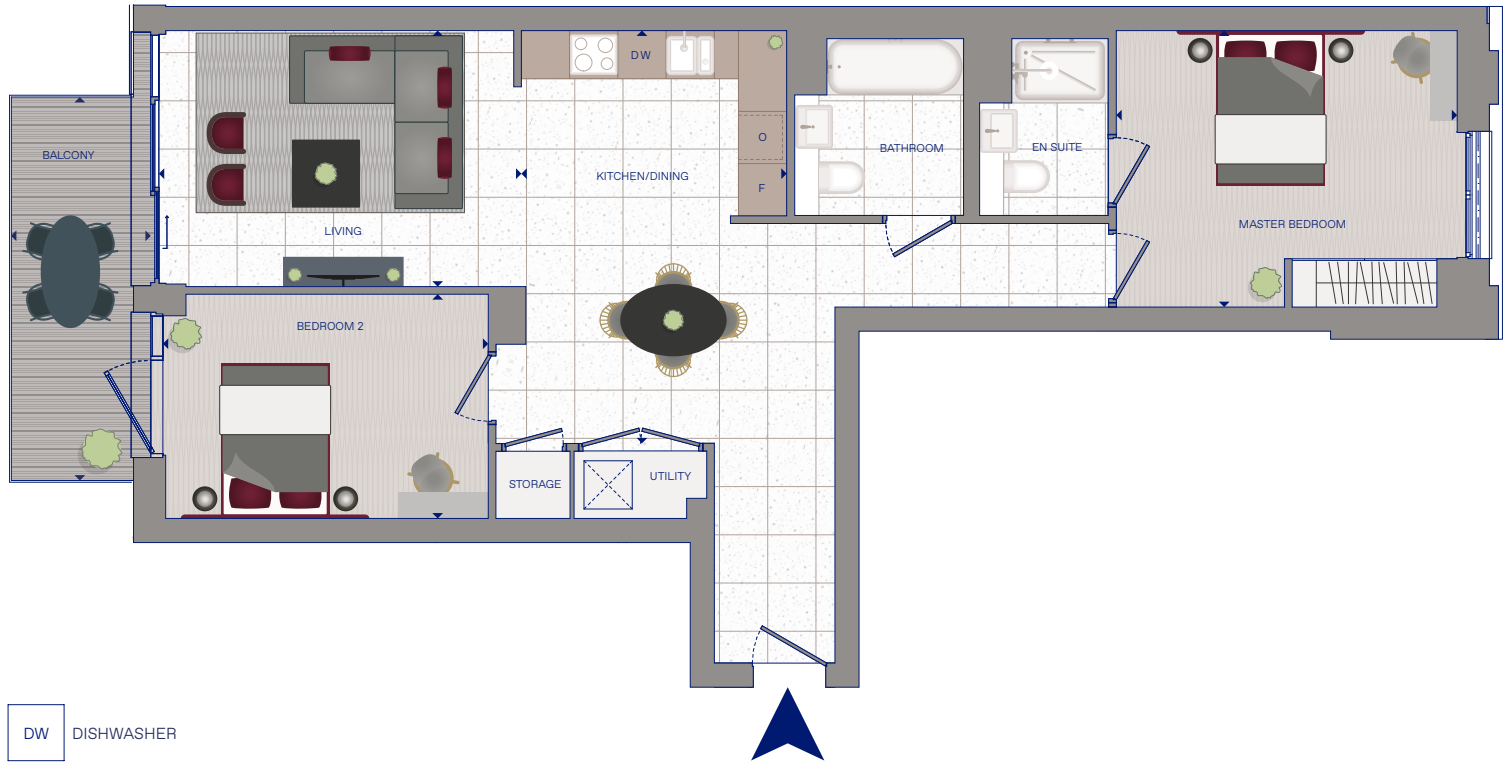
Floorplate









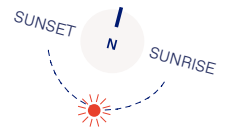
West courtyard elevation



The kitchen, furniture layouts and dimensions are for guidance only and are not to scale. All measurements given may vary within a tolerance of 5%. For more information on integrated appliances please see specification or speak to a sales consultant.

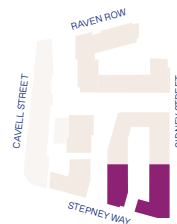


-  DW DISHWASHER
-  WASHING MACHINE
-  O OVEN
-  F FRIDGE/FREEZER
-  TERRAZZO
-  CARPET

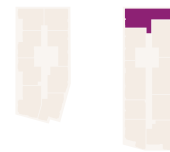


Total internal area	80.37 sq m	865 sq ft
LIVING	4.51m x 3.19m	14'10" x 10'5"
KITCHEN/DINING	3.30m x 5.14m	10'10" x 16'10"
MASTER BEDROOM	4.24m x 3.44m	13'11" x 11'3"
BEDROOM 2	4.05m x 2.79m	13'3" x 9'2"
Total external area	8.15 sq m	88 sq ft
BALCONY	1.74m x 4.77m	5'8" x 15'8"

Masterplan



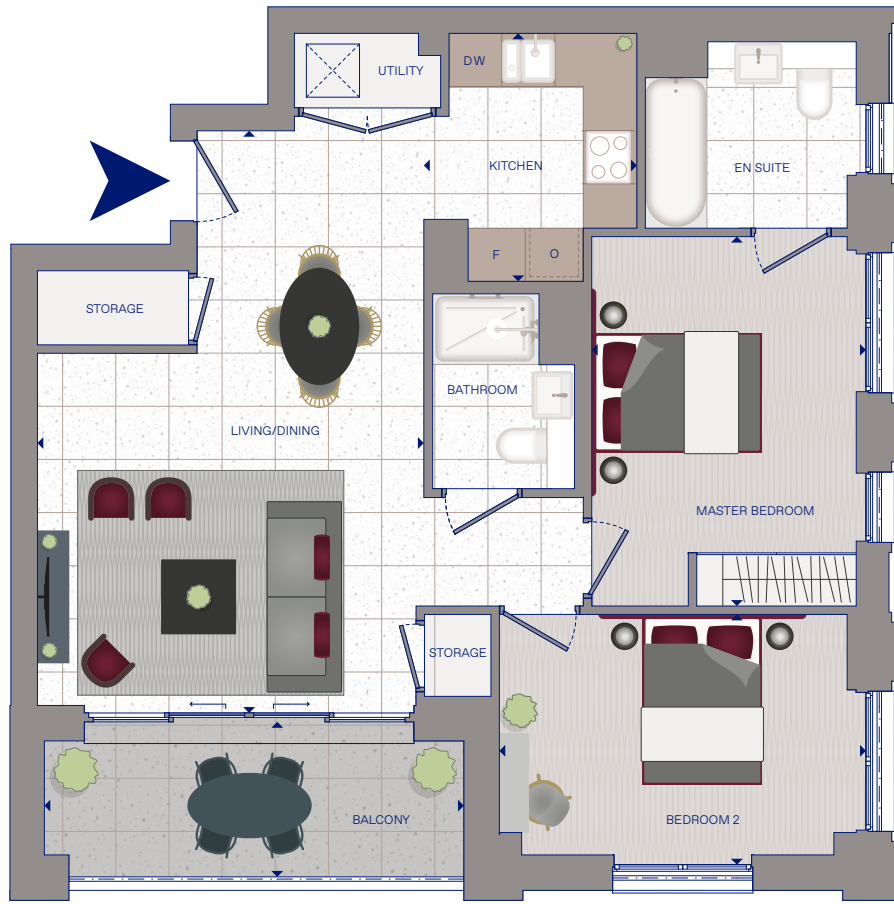
Floorplate









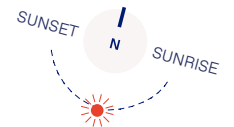
West courtyard elevation



The kitchen, furniture layouts and dimensions are for guidance only and are not to scale. All measurements given may vary within a tolerance of 5%. For more information on integrated appliances please see specification or speak to a sales consultant.



-  DW DISHWASHER
-  WASHING MACHINE
-  O OVEN
-  F FRIDGE/FREEZER
-  TERRAZZO
-  CARPET

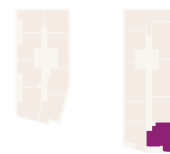
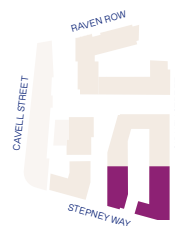


Total internal area	71.48 sq m	769 sq ft
LIVING/DINING	4.36m x 6.57m	14'4" x 21'7"
KITCHEN	2.40m x 2.80m	7'11" x 9'2"
MASTER BEDROOM	3.09m x 4.17m	10'2" x 13'8"
BEDROOM 2	4.14m x 2.83m	13'7" x 9'3"
Total external area	8.00 sq m	86 sq ft
BALCONY	4.74m x 1.75m	15'6" x 5'9"

Masterplan

Floorplate

East elevation

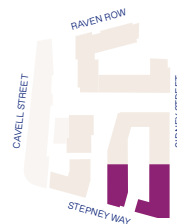


The kitchen, furniture layouts and dimensions are for guidance only and are not to scale. All measurements given may vary within a tolerance of 5%. For more information on integrated appliances please see specification or speak to a sales consultant.

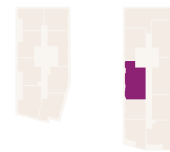


Total internal area	73.49 sq m	791 sq ft
LIVING	3.21m x 4.29m	10'6" x 14'1"
KITCHEN/DINING	3.40m x 5.05m	11'2" x 16'7"
MASTER BEDROOM	3.95m x 3.81m	13'0" x 12'6"
BEDROOM 2	3.14m x 3.99m	10'4" x 13'1"
Total external area	7.95 sq m	86 sq ft
BALCONY	1.74m x 4.77m	5'8" x 15'8"

Masterplan



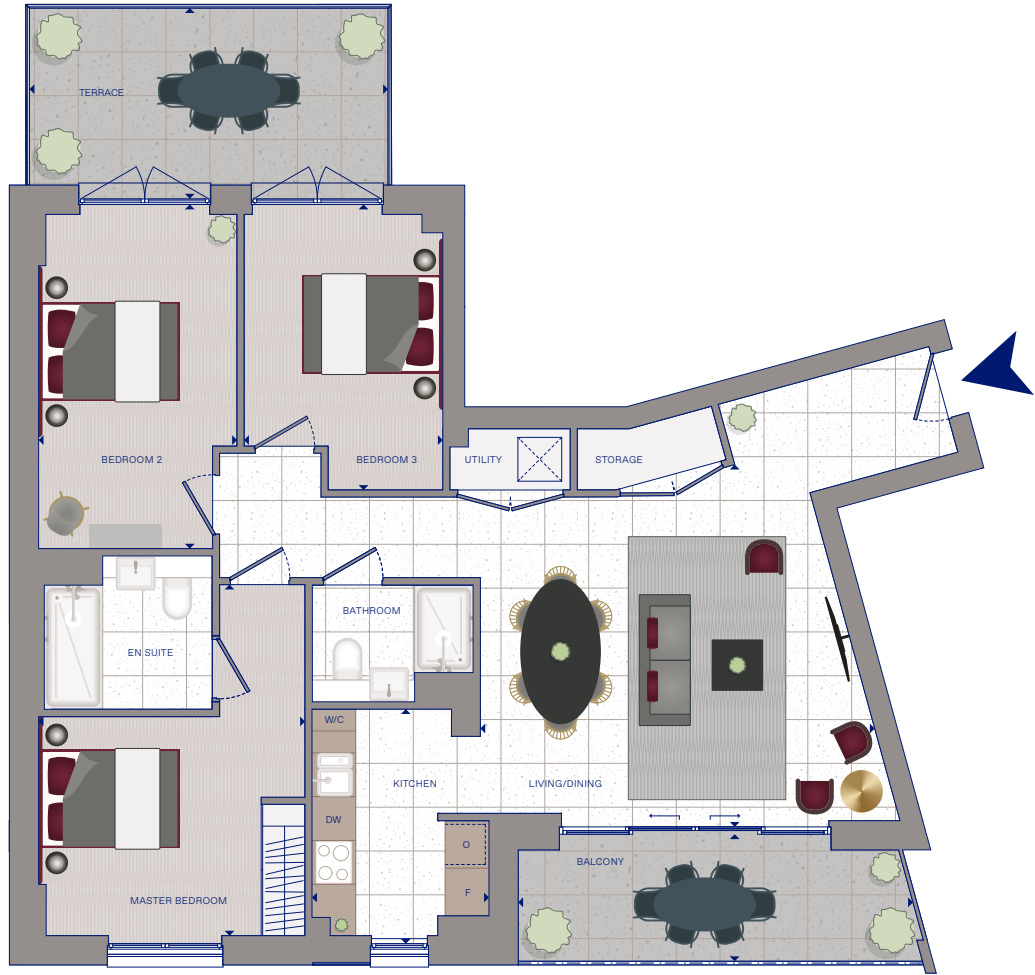
Floorplate



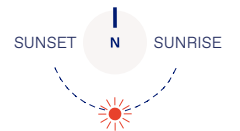
West courtyard elevation



The kitchen, furniture layouts and dimensions are for guidance only and are not to scale. All measurements given may vary within a tolerance of 5%. For more information on integrated appliances please see specification or speak to a sales consultant.



- DW DISHWASHER
- X WASHING MACHINE
- O OVEN
- F FRIDGE/FREEZER
- W/C WINE COOLER
- TERRAZZO TERRAZZO
- CARPET CARPET

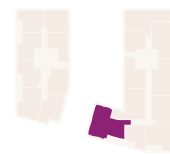
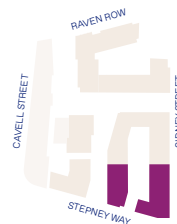


	89.84 sq m	967 sq ft
Total internal area		
LIVING/DINING	5.34m x 4.96m	17'9" x 16'3"
KITCHEN	2.42m x 3.21m	7'11" x 10'6"
MASTER BEDROOM	3.65m x 4.81m	12'0" x 15'9"
BEDROOM 2	2.72m x 4.71m	8'11" x 15'6"
BEDROOM 3	2.72m x 3.91m	8'11" x 12'10"
Total external area	21.61 sq m	233 sq ft
BALCONY	5.40m x 1.74m	17'9" x 5'9"
TERRACE	4.91m x 2.61m	16'1" x 8'7"

Masterplan

Floorplate

South elevation



The kitchen, furniture layouts and dimensions are for guidance only and are not to scale. All measurements given may vary within a tolerance of 5%. For more information on integrated appliances please see specification or speak to a sales consultant.

THESILKDISTRICT.COM



For more information, please contact us:

JLL International Residential

7/F, One Taikoo Place, 979 King's Road, Hong Kong

Tel: (852) 3759 0909, E-Mail: irp.hk@ap.jll.com

The brochure is for illustration only. Consequently, these particulars should be treated as general only and cannot be relied upon as accurately describing any of the special matters prescribed by any order made under the Property Misdescription Act 1991. Nor do they constitute a contract, part of a contract or a warranty. Our sales representatives for overseas property work exclusive in relation to properties outside Hong Kong and are not therefore licensed under the Estate Agents Ordinance to deal with Hong Kong properties. Certain images are computer generated for illustrative purposes. License No: C-029469. Jones Lang LaSalle Investments Limited for themselves and for the vendors or lessors of this property whose agents they are, give notice that the particulars do not constitute, nor constitute any part of an offer or a contract. All statements, contained in these particulars as to this property are made without responsibility on the part of Jones Lang LaSalle Investments Limited, or vendors or lessors. All descriptions, dimensions, and other particulars are given in good faith and are believed to correct but any intending purchasers or tenants should not rely on them as statements or representations of- fact and must satisfy themselves by inspection or otherwise as to the correctness of the each of them. No person in the employment of Jones Lang LaSalle Investments Limited has any authority to make or give any representation or warranty whatever in relation to this property. Last updated date: 05.12.19.Planning Permission (PA/01/2017).Local authority: Tower Hamlets Council. Property ID: IRP_N_101_00233.

A development by



Mount Anvil,
better London living

